



Hesper Mews
SW5

CHESTERTONS





A sleek and contemporary freehold house on a pretty cobbled mews, boasting three bedrooms, excellent entertaining space and a wonderful roof terrace.

Arranged over three storeys connected by an impressive spiral staircase, the house offers flexible accommodation, an abundance of natural light and is stylishly presented throughout. The ground floor consists of a generous reception/ dining room with high ceilings and connects to the modern open plan kitchen with a large breakfast bar, making it an ideal space to entertain. In addition there is a handy guest WC, utility room and plenty of storage.

The first floor hosts the properties three double bedrooms, including the master with ensuite bathroom, excellent inbuilt storage and access to a private balcony and a further family bathroom. On the second floor there is a wonderful dual aspect reception space with study area, perfect for working from home. Here you can access the stunning and serene East facing roof terrace via sliding doors.

Hesper Mews is a superbly located residential mews in a peaceful enclave of The Royal Borough of Kensington and Chelsea, offering easy access to the many shops, cafes and restaurants of Gloucester Road and Earls Court

- Peaceful cobbled mews
- Three/ four bedrooms
- Stylish and contemporary finish
- Wonderful private roof terrace
- No onward chain

Asking Price £2,950,000

Energy Efficiency Rating		Current	Potential
92-100	A		
81-91	B		
69-80	C		69
55-68	D		
39-54	E	47	
21-38	F		
1-20	G		

Not energy efficient - higher running costs

England, Scotland & Wales EU Directive 2002/91/EC

Tenure: Freehold
Service Charge: N/a
Ground Rent: N/a
Local Authority: Royal Borough of Kensington & Chelsea
Council Tax Band: H

Chestertons South Kensington Sales

44-48 Old Brompton Road
 London
 SW7 3DY

southkensington@chestertons.co.uk

020 7589 1234

chestertons.co.uk

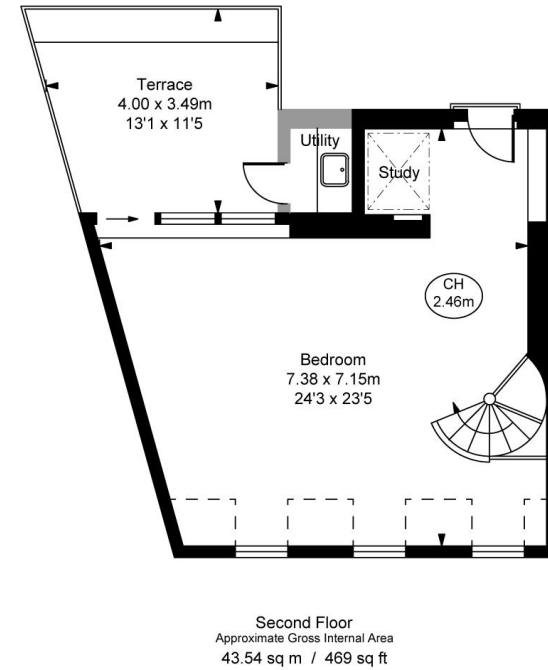
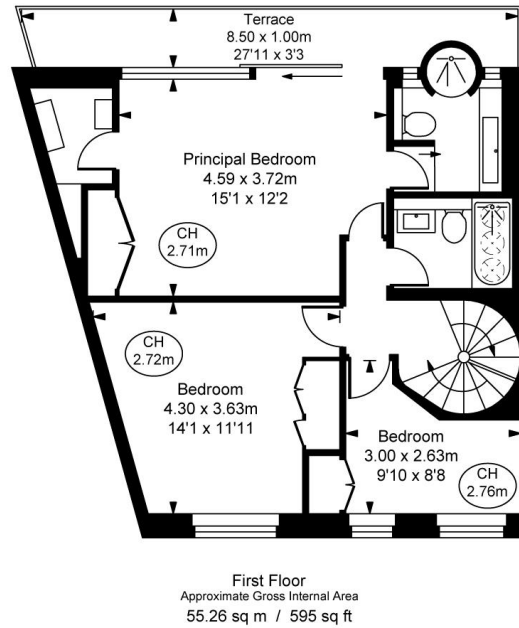
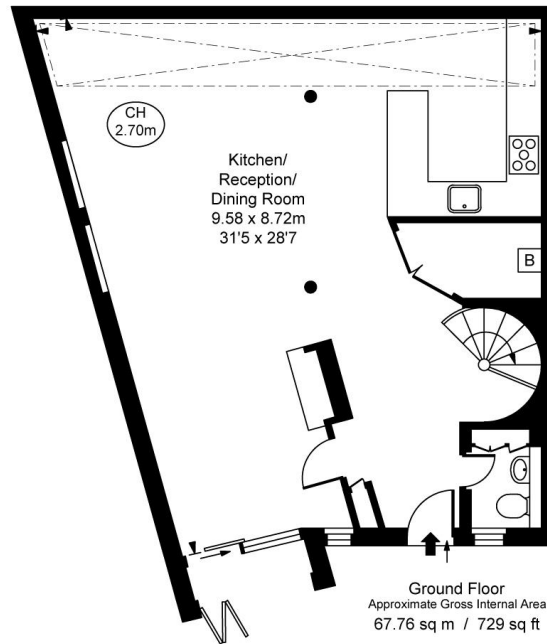
Hesper Mews, SW5

Approximate Gross Internal Area
 166.56 sq m / 1,793 sq ft
 Utility
 1.55 sq m / 17 sq ft

Total Areas Shown On Plan
 168.11 sq m / 1,810 sq ft

(Including restricted height under 1.5m [= = =])

(CH = Ceiling Heights)



This plan is not to scale. It is for guidance and not for valuation purposes.
 All measurements and areas are approximate only, and have been prepared in accordance with the current edition of the RICS Code of Measuring Practice.
 © Fulham Performance

Chesterton Global Ltd trading as Chestertons for themselves and for the vendor of this property whose agents they are, give notice that (i) these particulars do not constitute any part of an offer or contract, (ii) all statements contained within these particulars are made without responsibility on the part of Chestertons or the vendor, (iii) whilst made in good faith, none of the statements contained within these particulars are to be relied upon as a statement or representation of fact, (iv) any intending purchasers must satisfy themselves by inspection or otherwise as to the correctness of each of the statements contained within these particulars, (v) the vendor does not make or give either Chestertons or any person in their employment any authority to make or give representation or warranty whatsoever in relation to this property. Wide angle lenses may be used. ©Copyright Chestertons | Chesterton Global Ltd | Registered Office 40 Connaught Street, Hyde Park, London W2 2AB Registered Company Number 05334580.



This paper is 100% recyclable