



Courtfield Gardens
London, SW5

CHESTERTONS





An extremely elegant and impressive four bedroom duplex apartment offering exceptional volumes throughout. Peacefully situated on the highly desirable Courtfield Gardens.

This beautiful apartment is accessed via a generous reception hallway that opens onto the stunning reception room, complete with 3.84m ceilings, views across communal gardens and intricate corning. To the rear of the property is the private master bedroom with ensuite bathroom, an abundance of storage and access to a patio garden. On the lower level is a stylish eat in kitchen with high end appliances and plenty of storage, three double bedrooms, one with ensuite bathroom, additional family bathroom, access to two further patios and a most useful storage cellar.

Courtfield Gardens is a desirable garden square moments from the local shops, bars and restaurants of Gloucester Road, and within easy access of the many facilities of both South Kensington and High Street Kensington. The nearest Underground stations can be found at Gloucester Road and South Kensington. The green open spaces of Hyde Park and Kensington Palace Gardens are also nearby. For the motorist, there is easy access to the A4/M4 towards Heathrow and the West.

- Substantial family duplex apartment
- Excellent condition throughout
- Four bedrooms
- Garden square access
- Peaceful location

Asking Price £4,100,000

Energy Efficiency Rating		Current	Potential
90-100	A		
81-89	B		
72-80	C	70	78
63-71	D		
54-62	E		
45-53	F		
35-44	G		

Not energy efficient - higher running costs

England, Scotland & Wales

EU Directive 2002/91/EC

Tenure: Leasehold 927 years
Service Charge: £8045 per annum
Ground Rent: £0
Local Authority: Royal Borough of Kensington & Chelsea
Council Tax Band: G

Chestertons South Kensington Sales

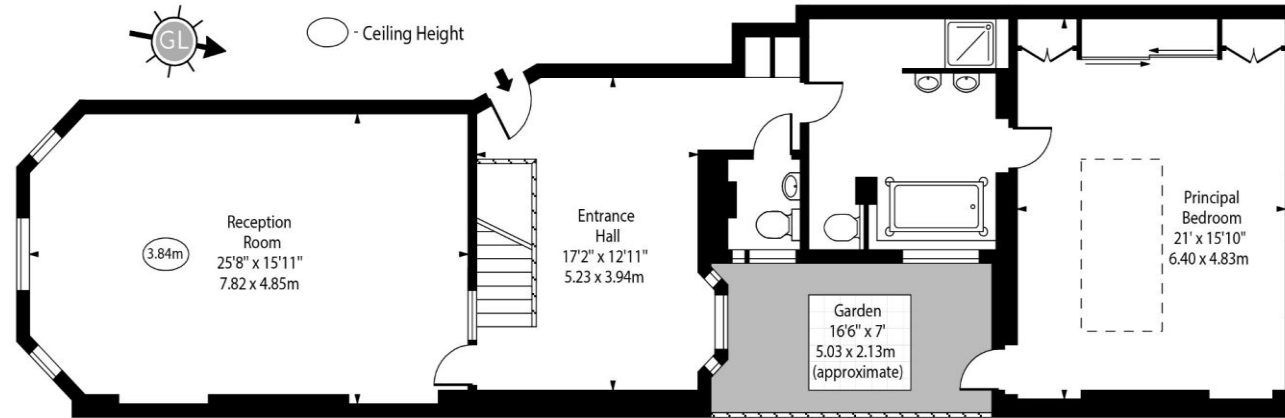
44-48 Old Brompton Road
 London
 SW7 3DY

southkensington@chestertons.co.uk

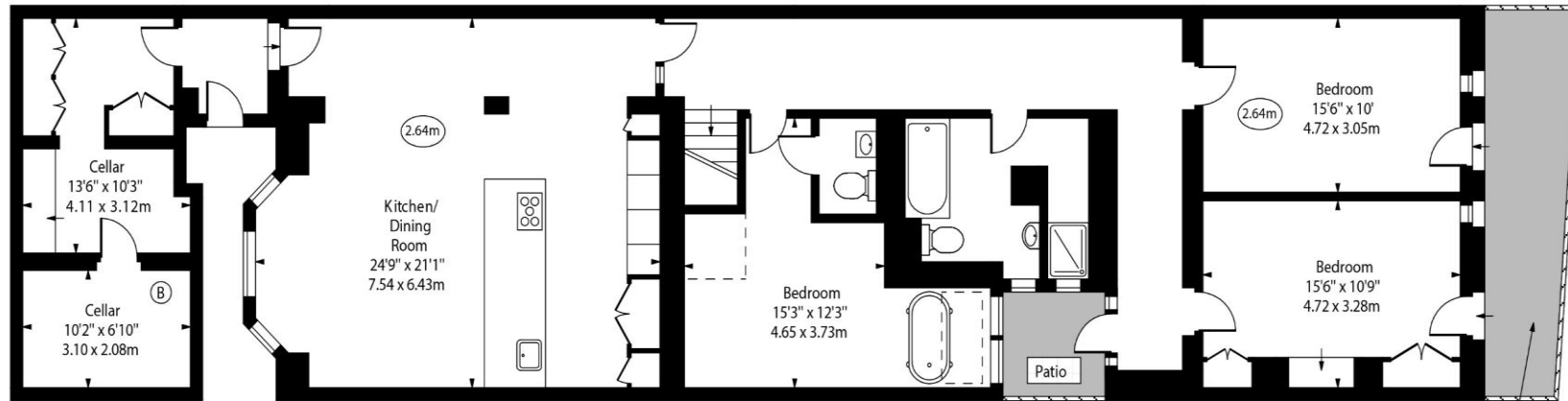
020 7589 1234

chestertons.co.uk

Courtfield Gardens, SW5



Ground Floor



Lower Ground Floor

Approx Gross Internal Area 2918 Sq Ft - 271.08 Sq M
(Including Cellars)

For Illustration Purposes Only - Not To Scale
www.goldlens.co.uk
Ref. No. 020804E

Chesterton Global Ltd trading as Chestertons for themselves and for the vendor of this property whose agents they are, give notice that (i) these particulars do not constitute any part of an offer or contract, (ii) all statements contained within these particulars are made without responsibility on the part of Chestertons or the vendor, (iii) whilst made in good faith, none of the statements contained within these particulars are to be relied upon as a statement or representation of fact, (iv) any intending purchasers must satisfy themselves by inspection or otherwise as to the correctness of each of the statements contained within these particulars, (v) the vendor does not make or give either Chestertons or any person in their employment any authority to make or give representation or warranty whatsoever in relation to this property. Wide angle lenses may be used. ©Copyright Chestertons | Chesterton Global Ltd | Registered Office 40 Connaught Street, Hyde Park, London W2 2AB Registered Company Number 05334580.



This paper is
100% recyclable