



Claydon House
Chelsea Waterfront, SW10





A spectacular five bedroom, seventh floor apartment in Chelsea Waterfront located on the edge of the River Thames offering stunning views from Chelsea in the West to Canary Wharf in the East, set amid tranquil landscaped gardens.

This impressive apartment comprises a vast reception room with open plan kitchen with large windows overlooking the River and access to a spacious private balcony, five double bedrooms, each with fitted wardrobes and ensuite bathroom, guest WC and excellent storage throughout. The high end finishes used to complete this apartment are numerous and include engineered hardwood flooring, integrated Gaggenau appliances in the kitchen, bathrooms finished with natural marble tiles, comfort cooling to all principle rooms and underfloor heating throughout and a Home Automated System. An addition, there is 24 hour concierge, CCTV and when fully complete, there will be a fully equipped gym and indoor swimming pool as well as two secure underground parking spaces as well as Waterside restaurants, bars and cafes.

Claydon House offers easy access to Imperial Wharf overland and underground train stations as well as the many shops and restaurants of the Kings Road

- Five bedrooms, five bathrooms
- Vast reception room with open plan kitchen
- Two balconies
- Spectacular views
- 24h concierge
- Two secure underground parking spaces

Asking Price £7,495,000

Energy Efficiency Rating		Current	Potential
92-100	A		
81-91	B	84	84
69-80	C		
55-68	D		
49-54	E		
41-46	F		
35-39	G		
Not energy efficient - higher running costs			
EU Directive 2002/91/EC			
England, Scotland & Wales			

Tenure: Leasehold 972 years 6 months

Service Charge: £25415 Paid quarterly

Ground Rent: £0

Local Authority: London Borough Of Hammersmith & Fulham

Council Tax Band: H

Chestertons South Kensington Sales

44-48 Old Brompton Road

London

SW7 3DY

southkensington@chestertons.co.uk

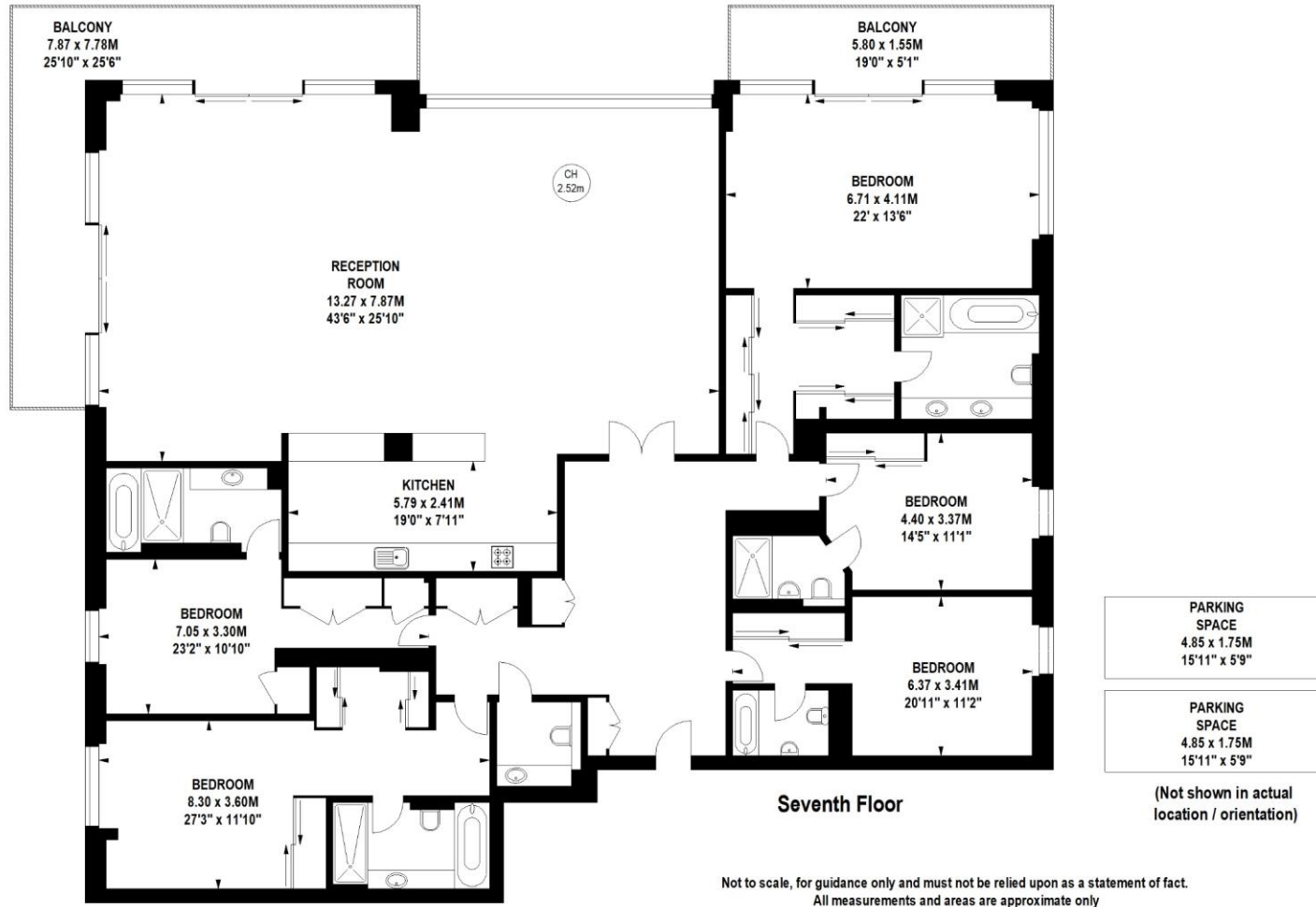
020 7589 1234

chestertons.co.uk

Claydon House, Waterfront Drive, SW10

Approximate gross internal area
304.71 sq m / 3280 sq ft

Key :
CH - Ceiling Height



Chesterton Global Ltd trading as Chestertons for themselves and for the vendor of this property whose agents they are, give notice that (i) these particulars do not constitute any part of an offer or contract, (ii) all statements contained within these particulars are made without responsibility on the part of Chestertons or the vendor, (iii) whilst made in good faith, none of the statements contained within these particulars are to be relied upon as a statement or representation of fact, (iv) any intending purchasers must satisfy themselves by inspection or otherwise as to the correctness of each of the statements contained within these particulars, (v) the vendor does not make or give either Chestertons or any person in their employment any authority to make or give representation or warranty whatsoever in relation to this property. Wide angle lenses may be used. ©Copyright Chestertons | Chesterton Global Ltd | Registered Office 40 Connaught Street, Hyde Park, London W2 2AB Registered Company Number 05334580.