



Onslow Gardens
South Kensington, SW7

CHESTERTONS





A unique and beautifully furnished one bedroom flat on the top floor of a well maintained Stucco fronted period conversion on Onslow Gardens, SW7.

Share of Freehold. The flat benefits from a stunning vaulted ceiling with exposed beams, a mezzanine study/second sleeping area, roof terrace with far reaching views, a contemporary fully fitted kitchen and modern bathroom. In addition to this is the newly refurbished communal areas and access to the communal gardens by separate arrangement.

Onslow Gardens is one of the most desirable streets in South Kensington. The apartment is located moments from both South Kensington and Gloucester Road tube stations with excellent access to the local cafes and restaurants of Old Brompton Road and Fulham Road.

Asking Price £750,000

Energy Efficiency Rating		Current	Potential
90-100	A		
81-89	B		
69-80	C		
55-68	D		68
49-54	E	47	
37-48	F		
1-36	G		

Not energy efficient - higher running costs

England, Scotland & Wales EU Directive 2002/91/EC

Tenure: Leasehold - 977 years remaining
Service Charge: £3,500 p.a. approx.
Ground Rent: Peppercorn
Local Authority: Royal Borough of Kensington & Chelsea
Council Tax Band: F

Chestertons South Kensington Sales

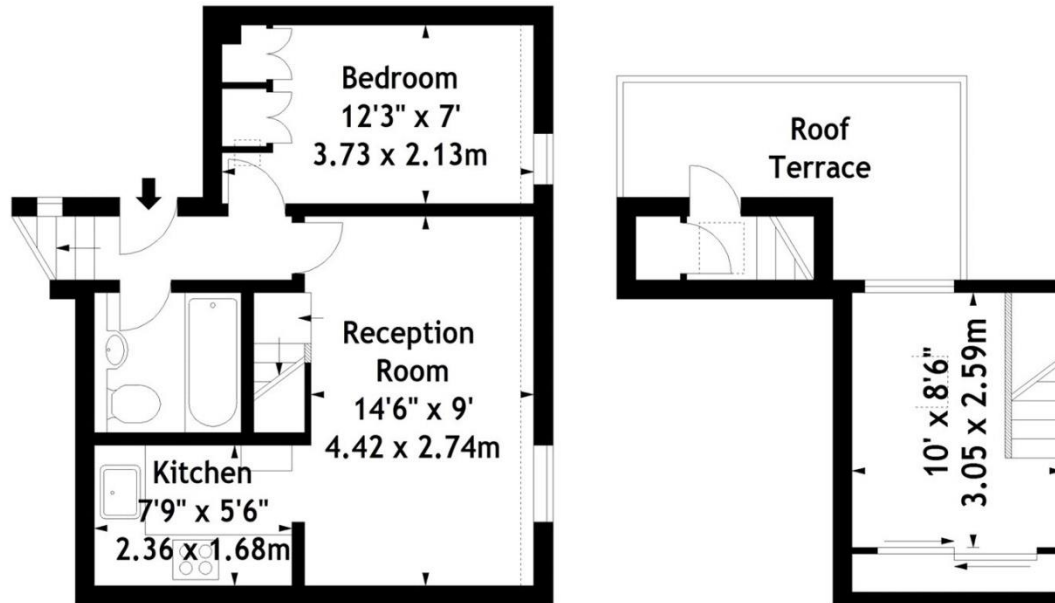
44-48 Old Brompton Road
 London
 SW7 3DY

southkensington@chestertons.co.uk

020 7589 1234

chestertons.co.uk

Onslow Gardens, SW7
Approx. Gross Internal Area
462 Sq Ft - 42.92 Sq M



Fourth Floor

Fifth Floor

Measured in accordance with RICS guidelines. Every attempt is made to ensure accuracy, however all measurements are approximate. This floor plan is for illustrative purposes only and is not to scale.

© Datography Ltd 2015
Photographs * Floorplans * Virtual Tours
Tel: 0845 643 4401 www.datography.com

