



Nevern Square
London, SW5





A light and airy studio apartment situated within the popular Earls Court garden square of Nevern Square, SW5.

Nevern Square is within close proximity to Earls Court Underground tube station (District and Piccadilly Line) as well as being close to the local restaurants, shops and amenities Earls Court Road has to offer. For the motorist, there is easy access to the A4/M4 towards Heathrow and the West.

Asking Price £400,000

Energy Efficiency Rating		
	Current	Potential
100-90 A		
89-81 B		
80-65 C	75	79
55-49 D		
44-39 E		
34-29 F		
1-10 G		
<small> Not energy efficient - higher running costs EU Directive 2002/91/EC England, Scotland & Wales </small>		

Tenure: Leasehold - 147 years remaining (Expires 01/09/2170)
Service Charge: £1,250 p.a. approx.
Ground Rent: £100 p.a. approx.
Local Authority: Royal Borough of Kensington and Chelsea
Council Tax Band: C

Chestertons South Kensington Sales

44-48 Old Brompton Road
 London
 SW7 3DY

sales.southkensington@chestertons.com

020 7589 1234

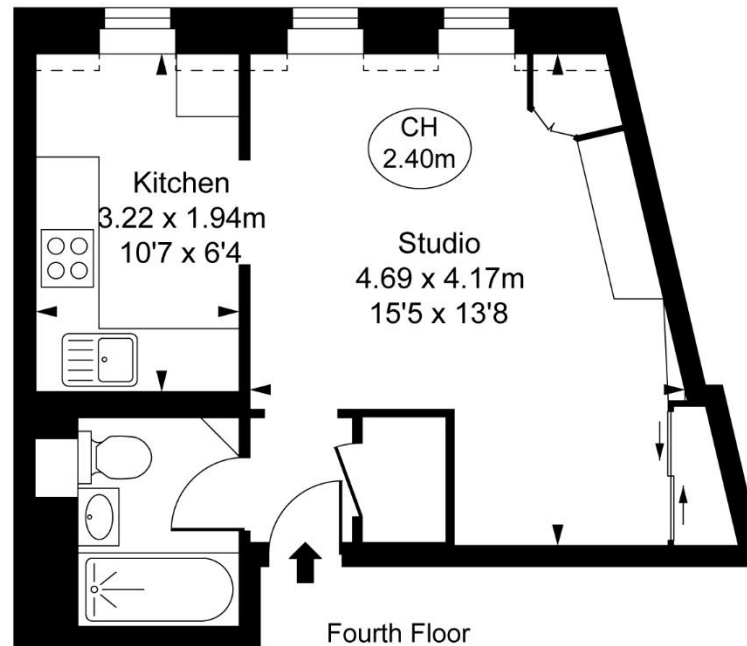
chestertons.co.uk

Nevern Square, SW5

Approximate Gross Internal Area
29.25 sq m / 315 sq ft

(Including restricted height
under 1.5m [-----])

(CH = Ceiling Heights)



Fourth Floor

This plan is not to scale. It is for guidance and not for valuation purposes.
All measurements and areas are approximate only, and have been prepared in accordance with the current edition of the RICS Code of Measuring Practice.
© Fulham Performance