



## MARY NEUNER ROAD, N8

**£1,999 pcm**

This high floor one bedroom apartment features bright kitchen, underfloor heating throughout. The property benefits from a courtyard facing balcony, providing an abundance of light. There are many facilities available including a gym, swimming pool, sauna and steam, private lounge, meeting and dining room, which residents have access to at the park club.

- One Bedroom
- High Floor
- Balcony
- Fully Furnished
- Gym
- Resident Roof Terrace





## ABOUT THE HOME

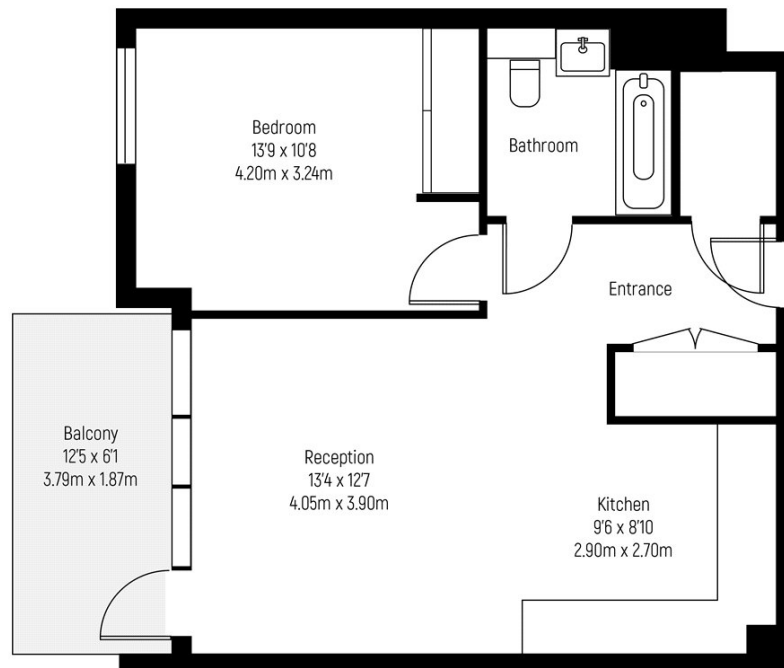
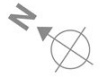
Clarendon is set to become a new city village in North London, creating new home and green space. Sitting in between Hornsey and Wood Green and the expansive Alexandra Park. Located closely to Hornsey Railway, Alexandra Palace station, Wood Green and Turnpike Lane stations toward Kings Cross.







## 1 bedroom apartment



**Approximate gross internal area: 552.5 sq ft / 51.33 sq m**

Whilst every attempt has been made to ensure the accuracy of the floorplan contained here, measurements of doors, windows, rooms and any other items are approximate. No responsibility is taken for any error, omission, or mis-statement. This plan is for illustrative purposes only and should be used as such by any prospective purchaser. The services, systems and appliances shown have not been tested and no guarantee as to their operability or efficiency can be given.  
© Copyright LiFE Residential 2021.

### LiFE RESIDENTIAL

71 Drayton Park, London, N5

1BF

Sales: 020 3838 8666

Lettings: 020 7359 4488

Energy Rating: B. We aim to make our particulars both accurate and reliable. However they are not guaranteed; nor do they form part of an offer or contract. If you require clarification on any points then please contact us, especially if you're traveling some distance to view. Please note that appliances and heating systems have not been tested and therefore no warranties can be given as to their good working order.