



LAPORTE WAY, LU4

£1,050 pcm

This one bedroom apartment offers an open plan living area with kitchen, fitted wardrobes with plenty of built in storage, a fully integrated kitchen, including a combination microwave, dishwasher, fridge, and separate washer/dryer. Property includes furniture and parking available.

- Studio
- Office Area
- Open Plan
- Furnished
- Fitted Wardrobes
- Parking Available

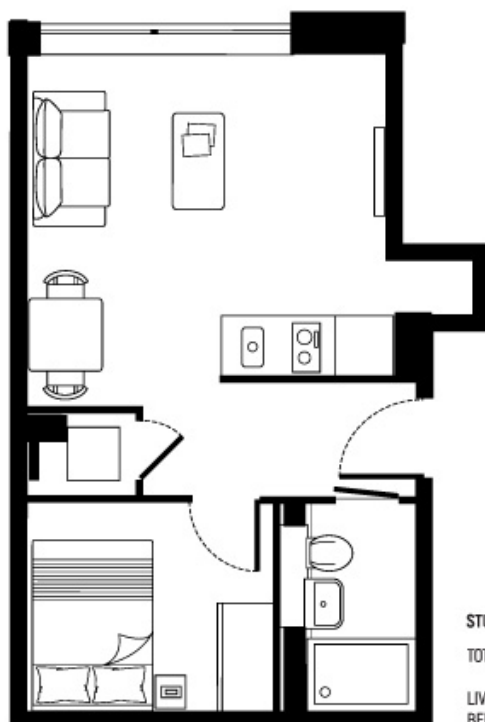


ABOUT THE HOME

Perfectly located in walking distance from Luton Station, offering easy access to St Pancras International. Close by the Town Centre, endless bars and restaurant's cafés. Alongside many greenery spaces, including Stockwood Park and Wardown Park.







STUDIO + STUDY

TOTAL AREA:	30.9 SQ.M.	333
LIVING AREA:	4.0 x 3.9m	13'4" x 12'9"
BEDROOM AREA:	2.7 x 2.3m	8'10" x 7'7"

Whilst every attempt has been made to ensure the accuracy of the floor plan contained here, measurements of doors, windows, rooms and any other items are approximate and no responsibility is taken for any error, omission, or mis-statement. This plan is for illustrative purposes only and should be used as such by any prospective purchaser. The services, systems and appliances shown have not been tested and no guarantee as to their operability or efficiency can be given

LiFE RESIDENTIAL

71 Drayton Park, London, N5

1BF

Sales: 020 3838 8666

Lettings: 020 7359 4488

Energy Rating: E. We aim to make our particulars both accurate and reliable. However they are not guaranteed; nor do they form part of an offer or contract. If you require clarification on any points then please contact us, especially if you're traveling some distance to view. Please note that appliances and heating systems have not been tested and therefore no warranties can be given as to their good working order.