



ATLAS BUILDING, EC1V

£700,000

A modern apartment in excess of 750 square feet within the Atlas Building overlooking Old Street. The open plan reception room has floor to ceiling windows allowing an abundance of natural light which lead to a ample size private balcony. The apartment is well arranged with two bedrooms and two luxury bathrooms.

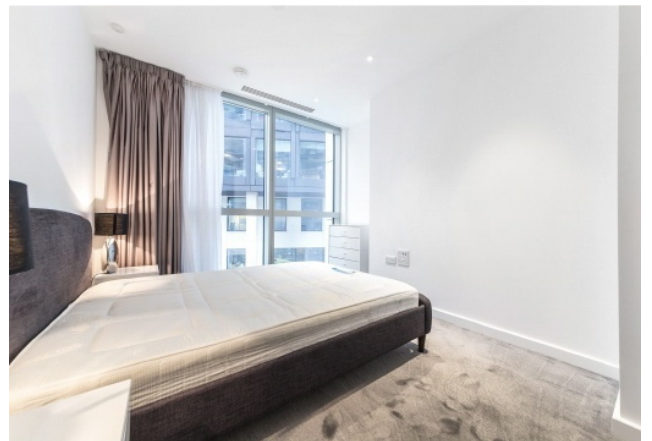
- Two Bedrooms
- 24hrs Concierge
- No Onward Chain
- Swimming Pool
- Cinema Room
- Guest Lounge



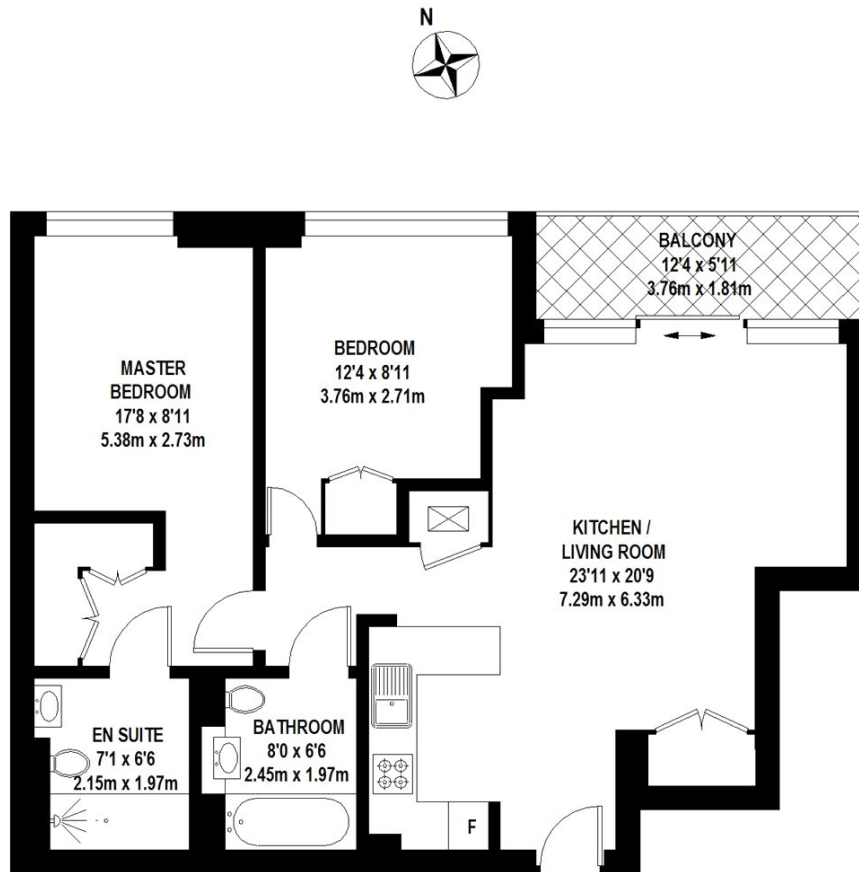
ABOUT THE HOME

The development offers a 24hr Concierge, Cinema Room, Residents Gym & Sauna.

The property is ideally located between Shoreditch, Islington and The City. The Atlas building is 38 storey luxury development at the heart of a vibrant and popular area. It is a fantastic location for the City schools, financial and tech companies nearby. The property is closely located to Old Street, Barbican and Farringdon stations, which offers links to Heathrow airport, local cafés, restaurant's and amenities.







70 sq.m - 753 sq.ft

Whilst every attempt has been made to ensure the accuracy of the floor plan contained here, measurements of door, windows, rooms and any other items are approximate and no responsibility is taken for any error, omission, or mis-statement. This plan is for illustrative purposes only and should be used as such by any prospective purchaser. The services, systems and appliances shown have not been tested and no guarantee as to their operability or efficiency can be given
© 2021 (ID764704)

LiFE RESIDENTIAL

71 Drayton Park, London, N5

1BF

Sales: 020 3838 8666

Lettings: 020 7359 4488

Energy Rating: . We aim to make our particulars both accurate and reliable. However they are not guaranteed; nor do they form part of an offer or contract. If you require clarification on any points then please contact us, especially if you're traveling some distance to view. Please note that appliances and heating systems have not been tested and therefore no warranties can be given as to their good working order.