



## 11 WHITLEY AVENUE

WARRINGTON, WA4 1UN

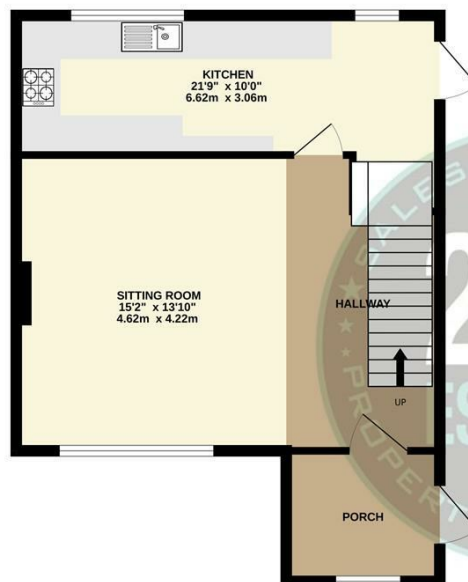
**£190,000**  
**FREEHOLD**

Nestled on the residential area of Latchford in Warrington, this delightful semi-detached house presents an excellent opportunity for families and first-time buyers alike. The property boasts three well-proportioned bedrooms, providing ample space for relaxation and rest. The inviting reception room serves as a perfect gathering space, ideal for entertaining guests or enjoying quiet evenings at home.

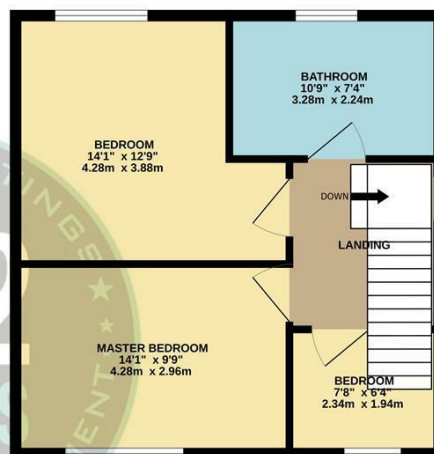




GROUND FLOOR  
536 sq.ft. (49.8 sq.m.) approx.



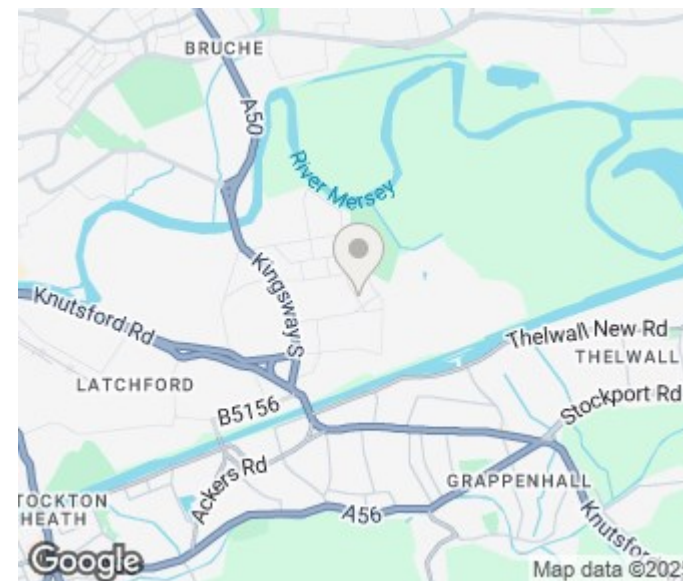
1ST FLOOR  
487 sq.ft. (45.3 sq.m.) approx.



3 BEDROOM SEMI

TOTAL FLOOR AREA : 1023 sq.ft. (95.0 sq.m.) approx.

Whilst every attempt has been made to ensure the accuracy of the floorplan contained here, measurements of doors, windows, rooms and any other items are approximate and no responsibility is taken for any error, omission or mis-statement. This plan is for illustrative purposes only and should be used as such by any prospective purchaser. The services, systems and appliances shown have not been tested and no guarantee as to their operability or efficiency can be given.  
Made with Metropix ©2025



Energy Efficiency Rating		
	Current	Potential
Very energy efficient - lower running costs		
(92 plus) <b>A</b>		
(81-91) <b>B</b>		
(69-80) <b>C</b>		
(55-68) <b>D</b>		
(39-54) <b>E</b>		
(21-38) <b>F</b>		
(1-20) <b>G</b>		
Not energy efficient - higher running costs		
<b>England &amp; Wales</b>	EU Directive 2002/91/EC	

Agents Note: Whilst every care has been taken to prepare these particulars, they are for guidance purposes only. All measurements are approximate and are for general guidance purposes only and whilst every care has been taken to ensure their accuracy, they should not be relied upon and potential buyers/tenants are advised to recheck the measurements

222 Estates Lettings and Sales  
222 Orford Lane Orford  
Warrington  
Cheshire  
WA2 7BB

01925 499599  
gregg@222estates.co.uk  
www.222estates.co.uk

