

Shootersway

, HP4 3NG



Shootersway

, HP4 3NG

Guide Price £1,200,000

- Penthouse retirement Apartment of 1248 sq.ft
 - Wrap around terrace South West aspect
- Superb open plan kitchen / dining / living room
- Principal bedroom with en-suite & dressing room
 - Utility area with useful storage
 - Lift access to communal lobby
- Stunning amenities including a restaurant and bar
- Nestled in a beautiful setting just 1 mile from the High Street





Shootersway

, HP4 3NG

The Denton apartments by Elysian Residences are redefining the standards of luxury retirement living in the UK, offering much more than one might expect. Situated on a sprawling site of four acres, The Denton features a total of 103 one and two bedroom apartments and penthouses, each equipped except one, with dedicated outdoor space, be it a balcony or terrace.

This remarkable development boasts an array of high-quality amenities, including an inviting restaurant and bar, which will also be open to the public. Additionally, homeowners can enjoy access to the state of the art gymnasium, a well-appointed library, luxurious beauty salon, and the convenience of a 24-hour in-house concierge service. Support services are readily available when needed, including a weekly housekeeping service and healthcare assistance included within the charges.

To enhance homeowners' convenience, a shuttle service will operate between 3-5 times per day, depending on demand, providing transportation to and from Berkhamsted town centre.

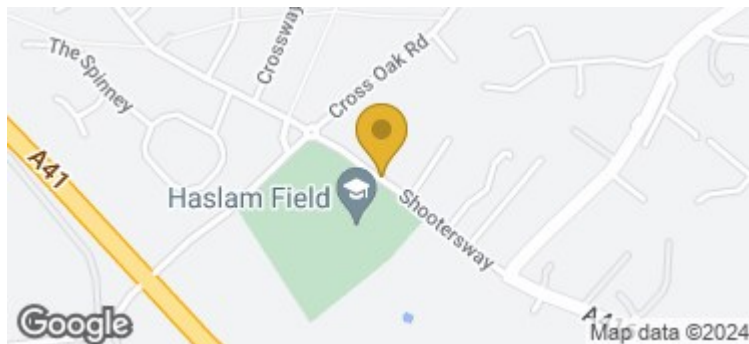
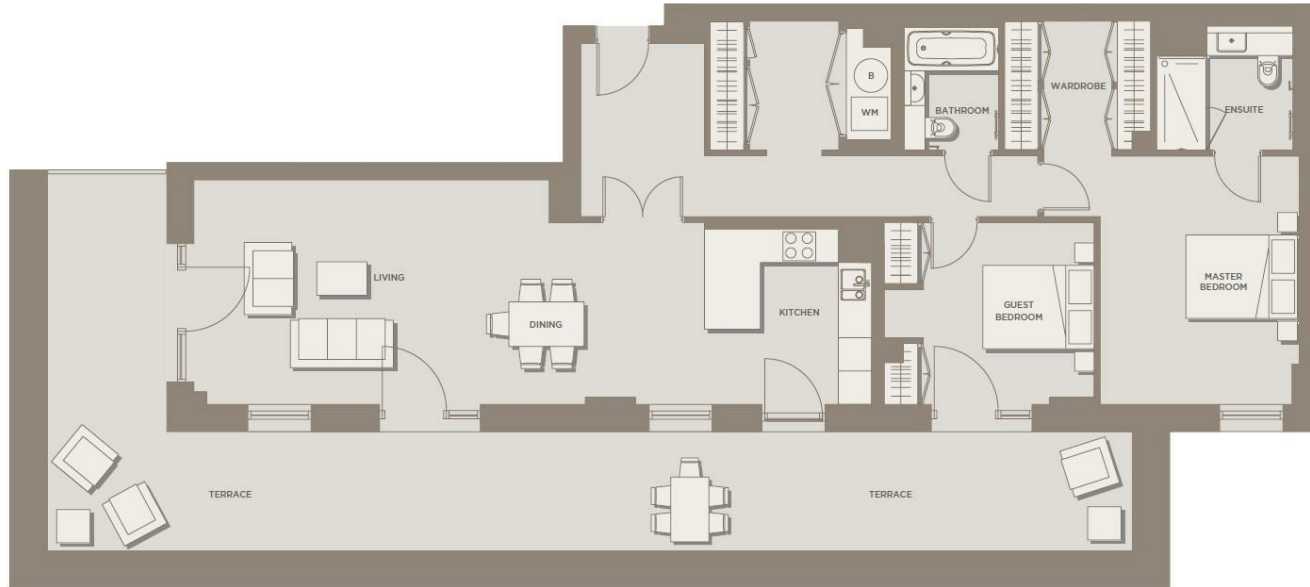
The Denton lifestyle is about making it possible to live the life you want, on your terms.

Berkhamsted is a quintessential market town nestled in the picturesque Chiltern Hills yet with excellent transport links via road and railway. There is a main line train station providing access to London Euston in approx. 34 mins. The town itself exudes charm and history with an excellent array of shops, restaurants, pubs and bars. The National Trusts Ashridge estate sits on the northern edge of the town offering over 5,000 acres of protected woodland.

To find out more about this exquisite development, contact the team at Fine & Country. Other fees apply including a monthly service charge and an exit fee, please ask for details.



Fine & Country Berkhamsted
130 High Street, Berkhamsted, Hertfordshire, HP4
3AT
01442 877 627
berkhamsted@fineandcountry.com



Energy Efficiency Rating		Current	Potential
<i>Very energy efficient - lower running costs</i>			
(92 plus) A			
(81-91) B			
(69-80) C			
(55-68) D			
(39-54) E			
(21-38) F			
(1-20) G			
<i>Not energy efficient - higher running costs</i>			
England & Wales		EU Directive 2002/91/EC	

Environmental Impact (CO ₂) Rating		Current	Potential
<i>Very environmentally friendly - lower CO₂ emissions</i>			
(92 plus) A			
(81-91) B			
(69-80) C			
(55-68) D			
(39-54) E			
(21-38) F			
(1-20) G			
<i>Not environmentally friendly - higher CO₂ emissions</i>			
England & Wales		EU Directive 2002/91/EC	

In accordance with the Consumer Protection from Unfair Trading Regulations 2008 (CPRs) and the Business Protection from Misleading Markets Regulations 2008 (BPRs) Fine & Country have prepared these property particulars as a general guide to a broad description of the property. Fine & Country as agents for the vendor or lessor and for themselves give notice that (a) these particulars are not intended to constitute part of an offer or contract (b) have not carried out a structural survey and the services, appliances and fittings have not been tested (c) all measurements, photographs, distances and floor plans referred to are given as a guide only and should not be relied upon for the purchase of fixtures and fittings (d) tenure details, service charges and ground rent (where applicable) are given as a guide only and should be checked and confirmed by your solicitor prior to exchange of contracts (e) neither the vendor nor any person in the employment of Fine & Country has any authority to make or give any representation or warranty whatsoever in respect of the property.