

# Westmount Estates



Congreve Road, London, SE9 1LW

**£2,100 PCM**

Nestled on the charming Congreve Road in London, this delightful end terrace house offers a perfect blend of comfort and style. With three well-proportioned bedrooms, this property is ideal for families or those seeking extra space.

The layout is thoughtfully designed to maximise space and light, creating a warm and inviting atmosphere throughout. The house features a large open plan living/kitchen/dining area, two modern bathrooms ensuring convenience for all residents, separate reception room on the ground floor and three bedrooms to the first floor.

Situated in a desirable area, this property benefits from excellent local amenities, including shops, schools, and parks, all within easy reach. The vibrant community and excellent transport links make it an ideal location for both work and leisure.

Do not miss the chance to view this charming residence.



**ENTRANCE**



**STAIRS AND LANDING**

**BEDROOM ONE**



**ENTRANCE HALL**

**UTILITY AND CLOAK ROOM**

**KITCHEN/LOUNGE/DINING ROOM**



**BEDROOM TWO**



**DOWNSTAIRS BATHROOM**



**BEDROOM THREE**



**RECEPTION ROOM**

**BATHROOM**



**REAR GARDEN**

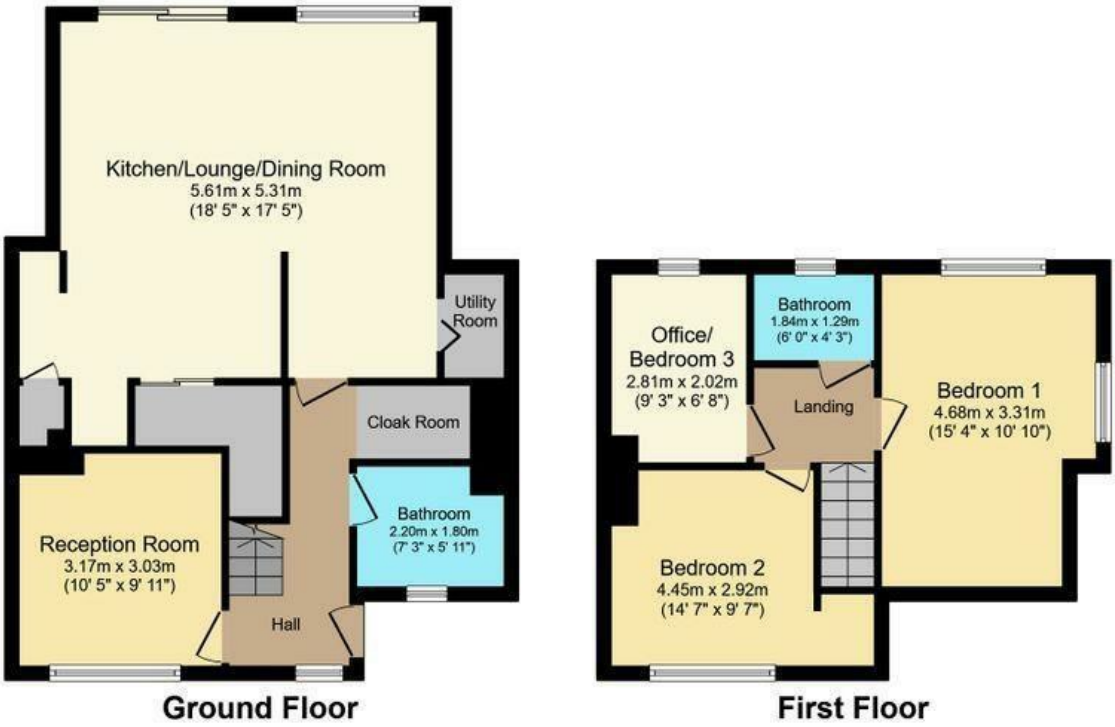


**FRONT GARDEN**





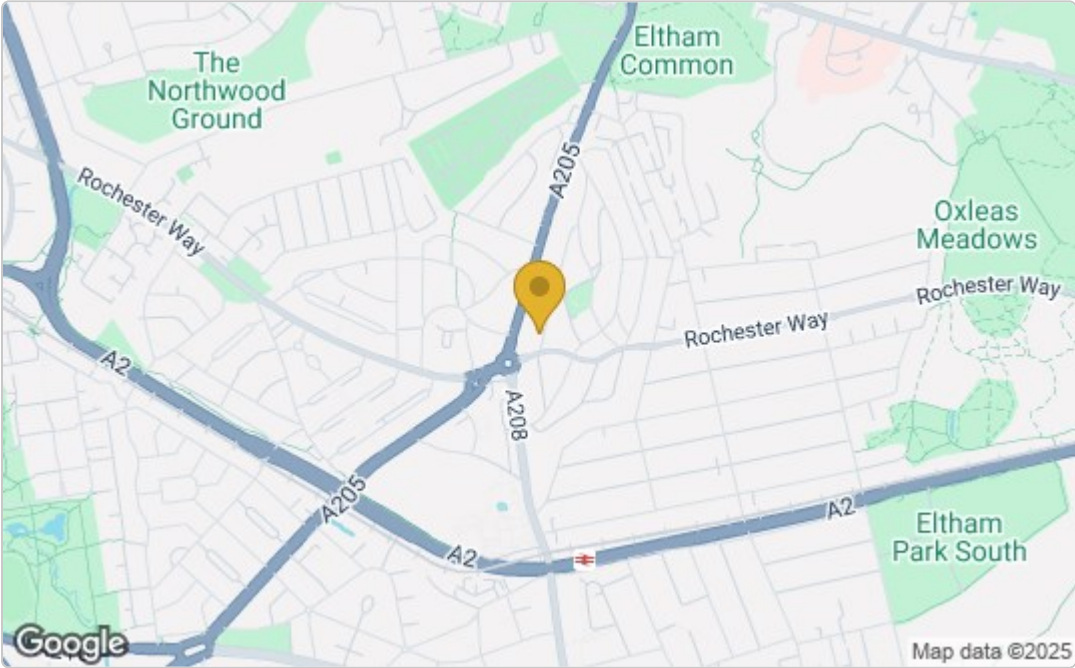
Floor Plan



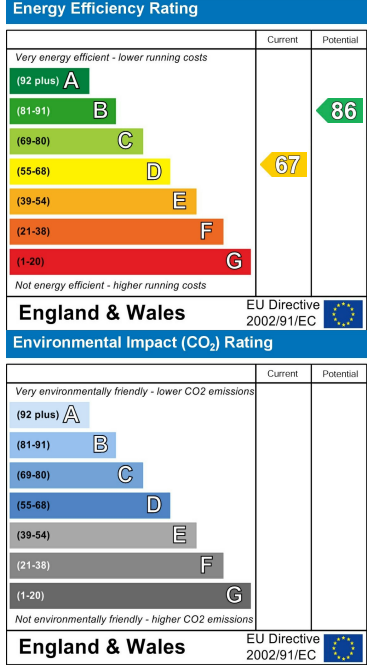
Total floor area 97.9 sq.m. (1,054 sq.ft.) approx

This floor plan is for illustrative purposes only. It is not drawn to scale. Any measurements, floor areas (including any total floor area), openings and orientation are approximate. No details are guaranteed, they cannot be relied upon for any purpose and they do not form part of any agreement. No liability is taken for any error, omission or misstatement. A party must rely upon its own inspection(s)

Area Map



Energy Efficiency Graph



These particulars, whilst believed to be accurate are set out as a general outline only for guidance and do not constitute any part of an offer or contract. Intending purchasers should not rely on them as statements of representation of fact, but must satisfy themselves by inspection or otherwise as to their accuracy. No person in this firms employment has the authority to make or give any representation or warranty in respect of the property.