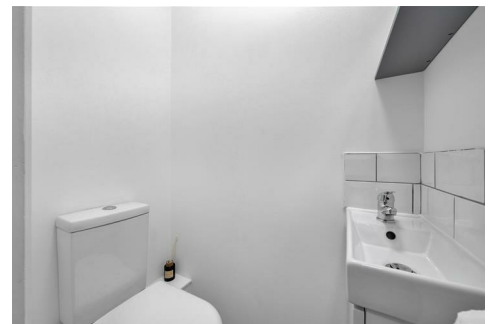
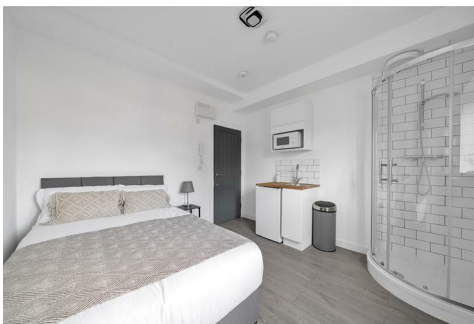


Westmount Estates



Well Hall Parade, London, SE9 6SP

£1,050 PCM

A LUXURY SELF-CONTAINED ENSUITE ROOM with WiFi, water rates and council tax included. The room contains a private shower, kitchen workstation with stainless steel sink and storage unit, fridge/freezer, microwave, electric heater and the use of both the communal kitchen and washing machine. Centrally situated within close proximity of both Eltham High Street, Eltham mainline train station and multiple bus terminals ideal for a professional single in need of fast and frequent transport.

Please contact our office for further details and to arrange an internal viewing.

COMMUNAL ENTRANCE

Communal washing machine.

PRIVATE ROOM

Room contains a private shower, kitchen workstation with stainless steel sink and storage unit, fridge/freezer, microwave and electric heater.

PRIVATE W.C

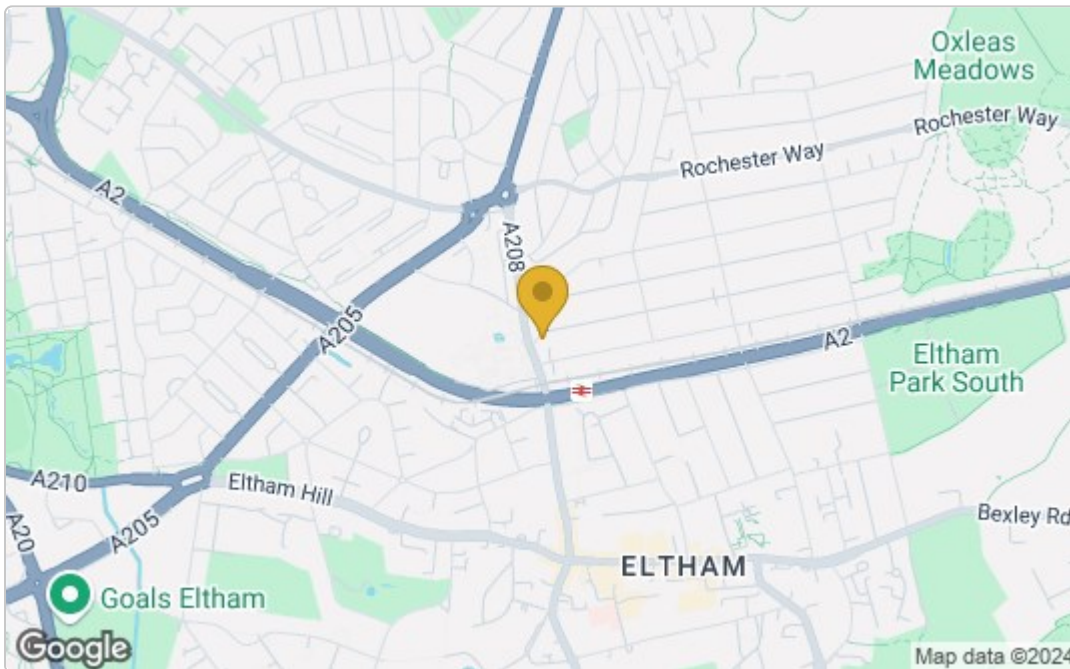
Low level W.C, wash hand basin.

COMMUNAL KITCHEN

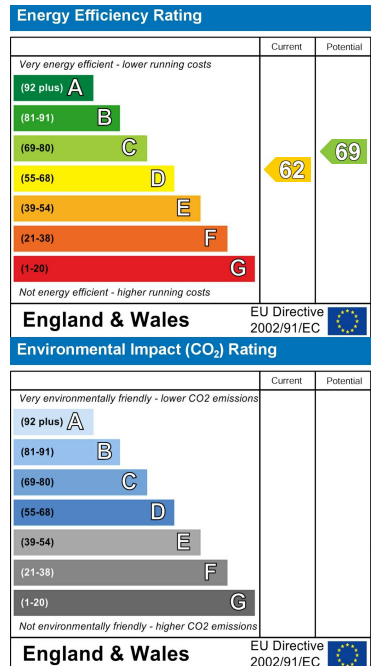
A range of eye and base units, wooden effect worksurface, built in oven, ceramic hob, tiled splash back and stainless steel sink.

Floor Plan

Area Map



Energy Efficiency Graph



These particulars, whilst believed to be accurate are set out as a general outline only for guidance and do not constitute any part of an offer or contract. Intending purchasers should not rely on them as statements of representation of fact, but must satisfy themselves by inspection or otherwise as to their accuracy. No person in this firm's employment has the authority to make or give any representation or warranty in respect of the property.