

Westmount Estates



Tarnwood Park, London, SE9 5PA

£1,750 PCM

Situated close to Mottingham station, Westmount Estates have the pleasure in offering this well presented THREE-bedroom FIRST FLOOR maisonette. Internally the property comprises of a large living room, fitted kitchen with a range of eye and base units and white goods and located upstairs three spacious bedrooms and a three-piece bathroom.

To avoid disappointment contact us today for an internal viewing.

COMMUNAL ENTRANCE

ENTRANCE HALL

LIVING ROOM

KITCHEN

STAIRS AND LANDING

BEDROOM ONE

BEDROOM TWO

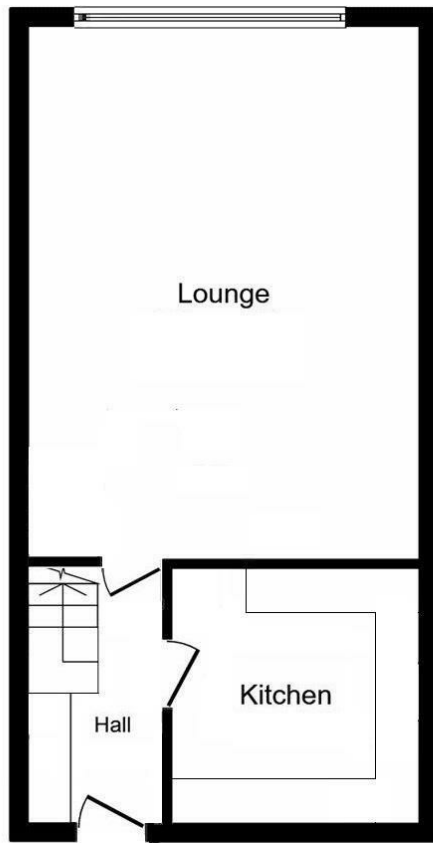
BEDROOM THREE

BATHROOM

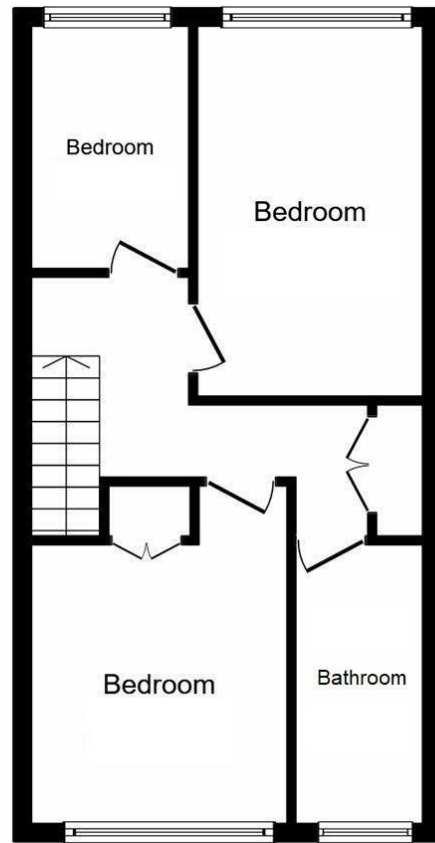
OPTIONAL GARAGE AT AN ADDITIONAL CHARGE

OPTIONAL GARAGE AT AN ADDITIONAL CHARGE

Floor Plan

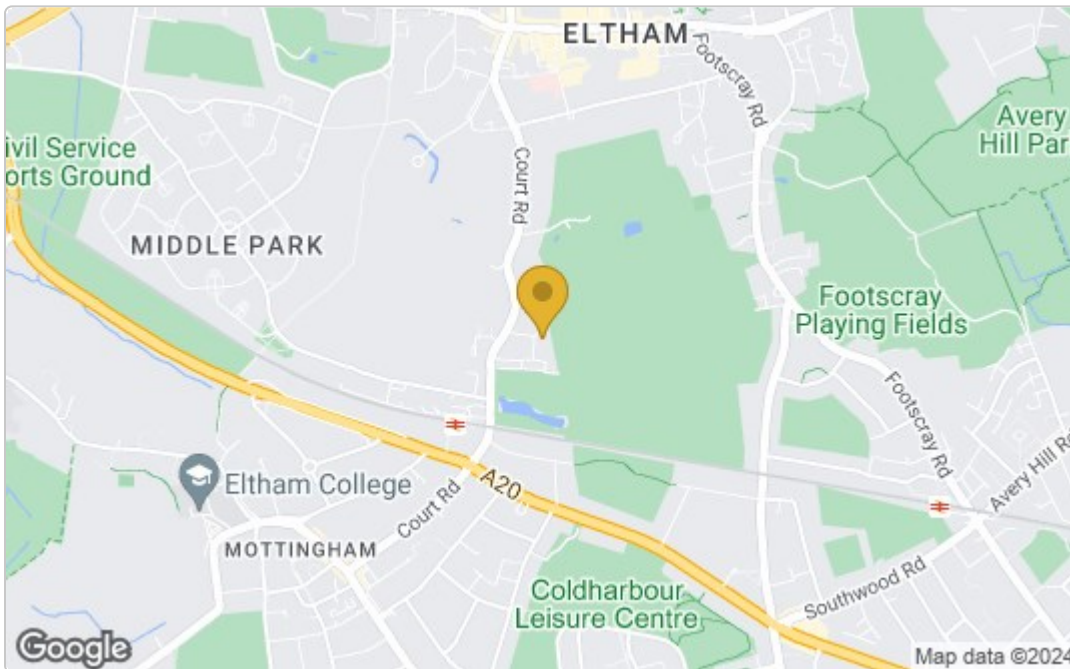


First Floor

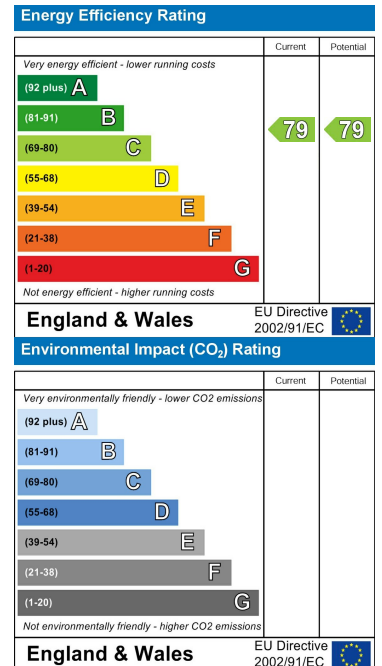


Second Floor

Area Map



Energy Efficiency Graph



These particulars, whilst believed to be accurate are set out as a general outline only for guidance and do not constitute any part of an offer or contract. Intending purchasers should not rely on them as statements of representation of fact, but must satisfy themselves by inspection or otherwise as to their accuracy. No person in this firm's employment has the authority to make or give any representation or warranty in respect of the property.