



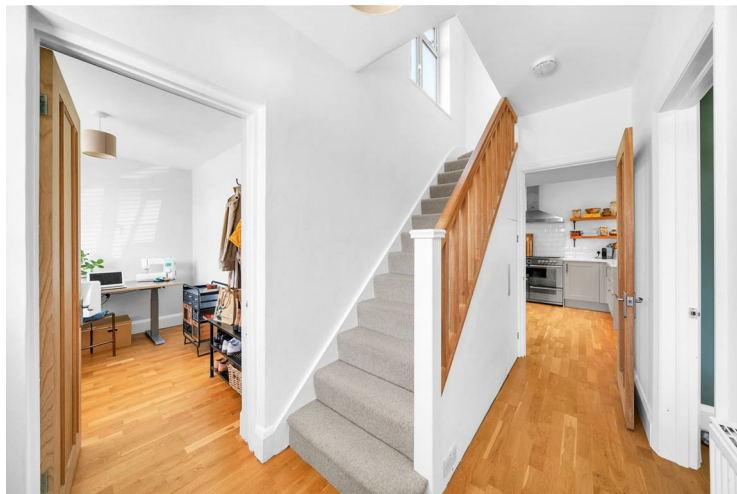
Packmores Road, London, SE9 2NB

**Asking Price £785,000**

Positioned in a Cul De Sac location affectionately known as 'The Round' by the current residents is this extended FOUR bedroom semi detached family home. Presented in excellent condition throughout, this property needs to be viewed to fully appreciate the accommodation on offer. Internally the property is arranged to provide: reception room with sliding doors opening to the dining room and lounge, kitchen, utility room, ground floor W.C. and study to the ground floor. To the first floor are THREE well proportioned bedrooms and family bathroom whilst to the second (top) floor is a large master bedroom with en-suite shower room. Packmores Road is located within the sought after Eltham Heights offering access back to Falconwood mainline train station and close to multiple bus routes servicing the local area. EPC rating: D, council tax Greenwich band E, freehold.



## ENTRANCE HALL



Entrance door with three frosted glass inserts, centre light point, radiator, carpeted stairs to first floor level with under stairs storage cupboard, engineered wood flooring.

## RECEPTION ROOM 12'4" x 11'8" (3.78 x 3.56)



Double glazed bay window to front, centre light point, display shelving to both alcoves, cast iron feature fire place with wooden mantle over, sliding internal doors leading to dining room, engineered wood flooring.

## DINING ROOM 12'5" x 10'2" (3.80 x 3.12)



Inset ceiling spot lights, breakfast bar to kitchen, built in storage cupboard, radiator, engineered wood flooring.

## LOUNGE 11'10" x 11'2" (3.62 x 3.41)



Bi-fold doors to left hand side leading to garden, roof lantern, inset ceiling spot lights, radiator, engineered wood flooring.

## KITCHEN 12'5" x 11'2" (3.81 x 3.42)



Fitted with a matching range of base units with work surface over, one and a half bowl stainless steel sink with chefs style mixer tap, space for seven ring gas burner range cooker with stainless steel extractor hood over, space for American style fridge freezer. Integrated dishwasher. Double glazed window to left hand side and rear, roof lantern, partly tiled walls, engineered wood flooring.

## UTILITY ROOM 9'10" x 7'9" (3.02 x 2.37)

Double glazed door to rear leading to garden, centre light point, wall mounted boiler, work surface with plumbing for washing machine under, radiator, engineered wood flooring.

## GROUND FLOOR W.C. 3'7" x 3'0" (1.10 x 0.93)

Low level flush W.C. vanity wash hand basin with mixer tap and local tiling around, centre light point, tiled flooring.



### **STUDY 9'10" x 6'9" (3.01 x 2.08)**



Double glazed window to front, centre light point, radiator, engineered wood flooring.

### **FIRST FLOOR LANDING**

Centre light point, coving to ceiling, doors to all rooms, frosted double glazed window to side, carpeted stairs to second floor level, carpet as laid.

### **BEDROOM TWO 13'5" x 9'10" to wardrobe doors (4.11 x 3.02 to wardrobe doors)**



Double glazed window to front, built in wardrobes to both alcoves, centre light point, coving to ceiling, radiator, carpet as laid.

### **BEDROOM THREE 12'11" x 10'0" (3.96 x 3.06)**



Double glazed window to rear, centre light point, coving to ceiling, radiator, carpet as laid.

### **BEDROOM FOUR 8'10" x 7'5" (2.70 x 2.27)**



Double glazed windows to rear and left hand side, built in storage cupboard housing hot water cylinder, coving to ceiling, centre light point, radiator, carpet as laid.

### **FAMILY BATHROOM 7'10" x 6'4" (2.40 x 1.94)**



Modern fitted three piece suite comprising: paneled bath with mixer tap, shower over and glass shower screen, pedestal wash hand basin with mixer tap and low level flush W.C. Double glazed frosted window to front, two



double frosted windows to side. Heated towel rail, tiled walls and tiled floor.

## **SECOND FLOOR LANDING**

Carpet as laid, Velux window, centre light point.

## **MASTER BEDROOM 18'7" x 12'10" (5.67 x 3.92)**



Two Velux windows to front, double glazed patio doors to rear with Juliet balcony, eaves storage cupboard, built in floor to ceiling wardrobe, radiator, carpet as laid.

## **EN SUITE SHOWER ROOM 6'8" x 6'4" (2.04 x 1.94)**



Modern fitted suite comprising: Walk in corner shower cubical with glass sliding doors, two pedestal wash hand basins both with mixer taps and low level flush W.C. Inset ceiling spotlights, frosted double glazed window to rear, heated towel rail, partly tiled walls, tiled flooring.

## **FRONT GARDEN**

Off street parking for multiple vehicles.

## **REAR GARDEN**



Decked area, laid to lawn, mature trees, side access, shed, outside tap, outside electricity point.

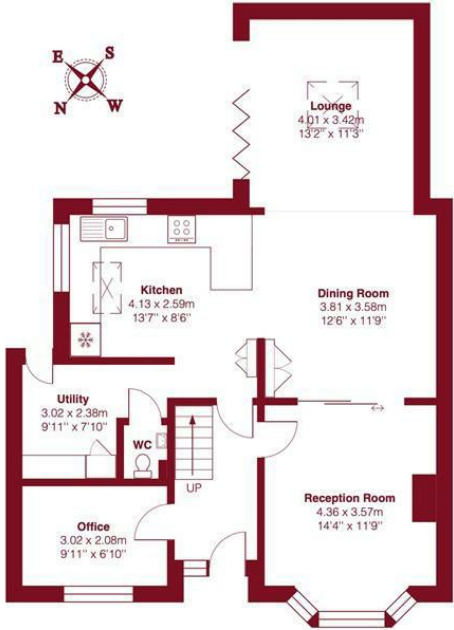


Floor Plan



Packmores Road SE9

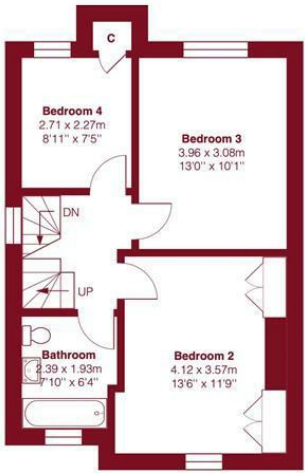
Total Area: 149.5 m<sup>2</sup>... 1609 ft<sup>2</sup>



Ground Floor



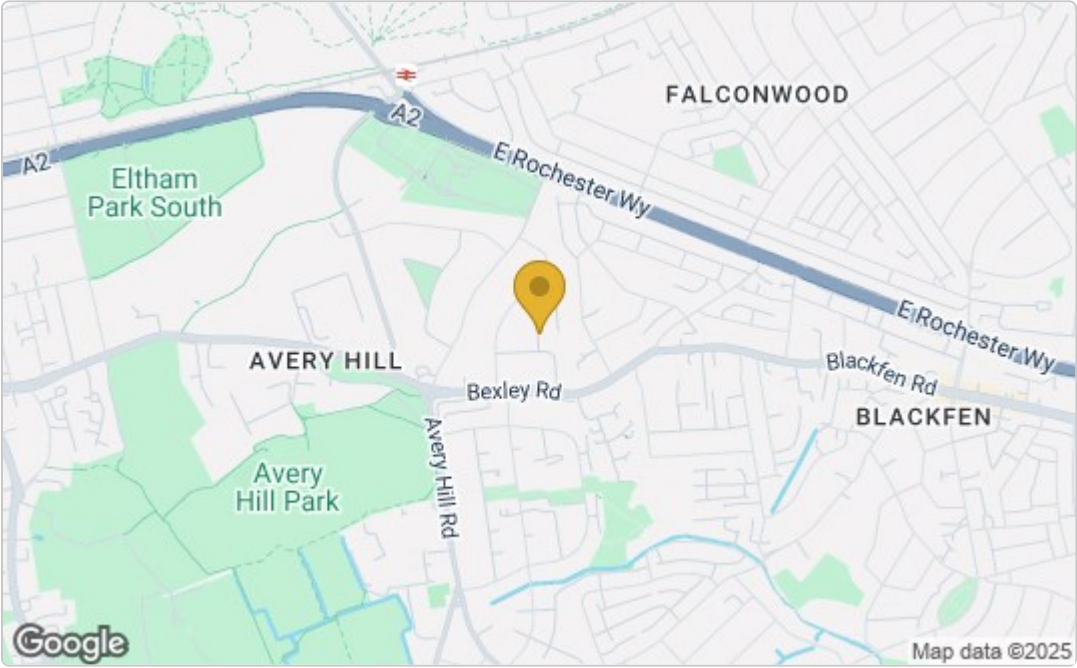
Second Floor



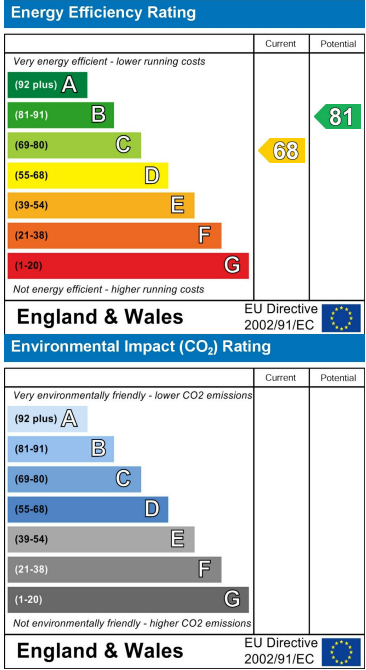
First Floor

This plan is for layout guidance only and not drawn to scale unless stated. Window and door openings are approximate. Whilst every care is taken in the preparation of this plan, we would advise interested parties to check all dimensions, shapes and compass bearings prior to making any decisions reliant upon them.

Area Map



Energy Efficiency Graph



These particulars, whilst believed to be accurate are set out as a general outline only for guidance and do not constitute any part of an offer or contract. Intending purchasers should not rely on them as statements of representation of fact, but must satisfy themselves by inspection or otherwise as to their accuracy. No person in this firms employment has the authority to make or give any representation or warranty in respect of the property.