

Westmount Estates



Westmount Road, Eltham, SE9 1UT

£950 PCM

A converted studio apartment, with water rates and WiFi included, situated within the heart of Eltham Park just a short walk to both main line station and the High Street. Internally is an open plan living area with kitchenette and private bathroom. Available soon demand for this property is sure to be high so an internal viewing comes highly recommended.

ENTRANCE HALL

STUDIO ROOM

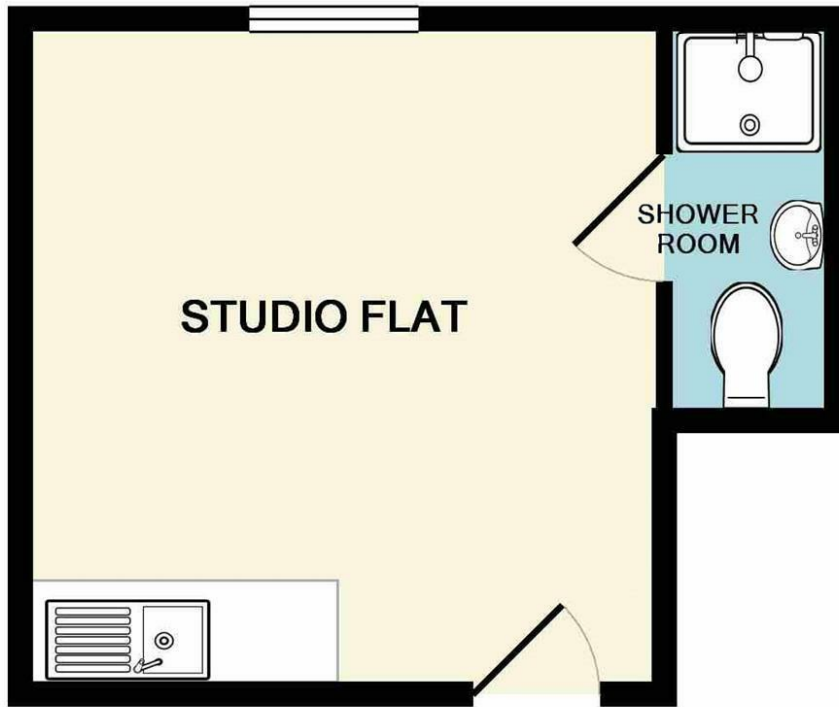


KITCHENETTE

PRIVATE BATHROOM

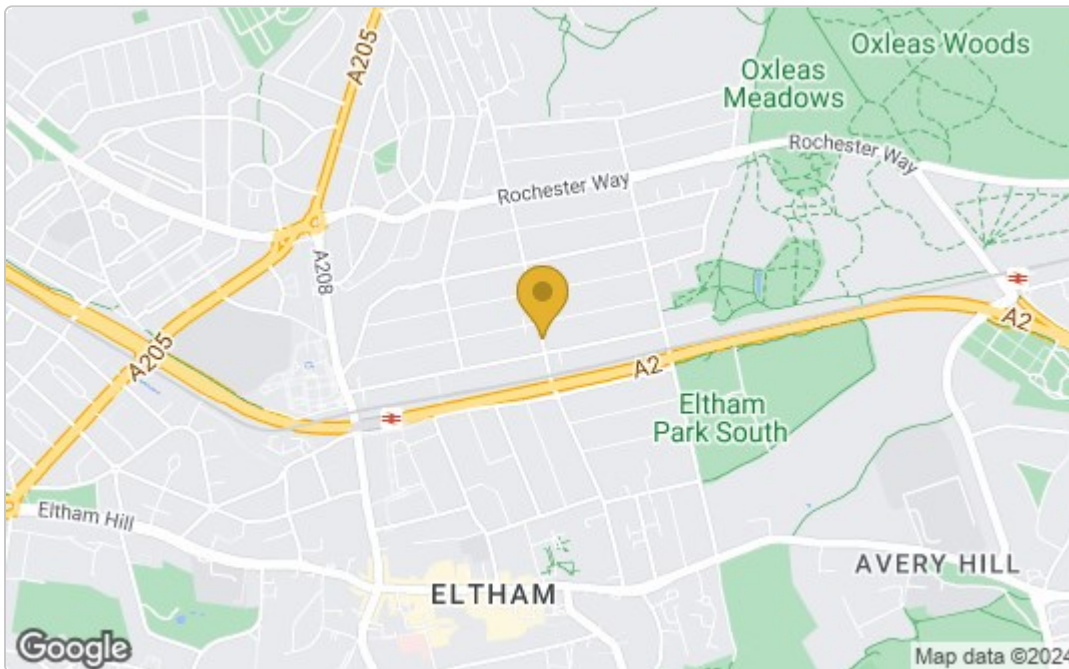


Floor Plan

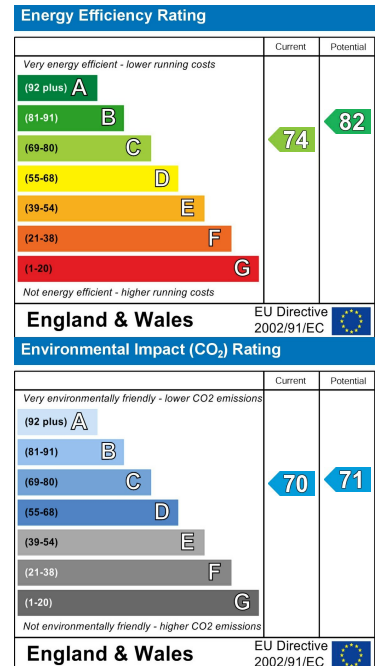


Measurements are approximate. Not to scale. Illustrative purposes only
 Made with Metropix ©2017

Area Map



Energy Efficiency Graph



These particulars, whilst believed to be accurate are set out as a general outline only for guidance and do not constitute any part of an offer or contract. Intending purchasers should not rely on them as statements of representation of fact, but must satisfy themselves by inspection or otherwise as to their accuracy. No person in this firm's employment has the authority to make or give any representation or warranty in respect of the property.