

Flat 5, 48 Southover High Street, Lewes, East Sussex, BN7 1HX
Asking Price £450,000

Flat 5, 48 Southover High Street, Lewes, East Sussex, BN7 1HX

A split-level second floor apartment in an attractive Grade II listed building in Southover High Street, close to mainline station, Grange gardens and the town centre. Spacious lounge with feature fireplace, modern kitchen, two double bedrooms, bathroom and stunning views to The Castle.

The Property

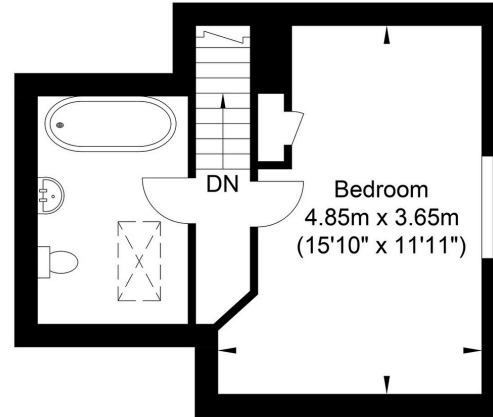
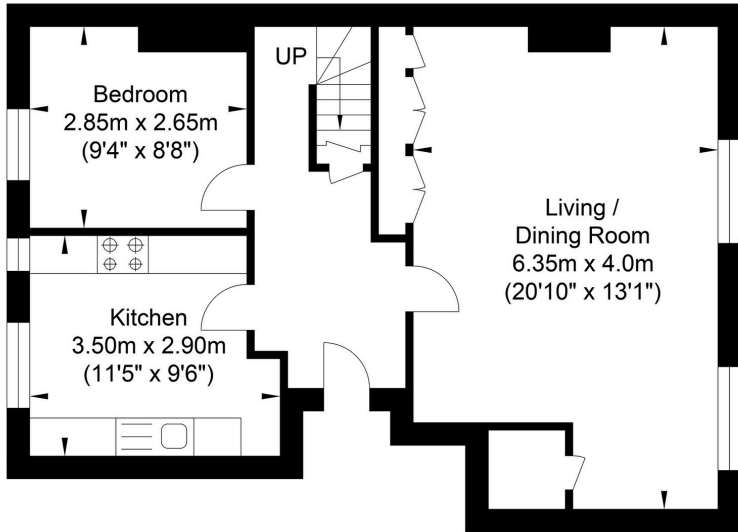
Solid wood front door leads to an impressive entrance hall with stairs rising to the first floor. A further door leads to the second floor. Storage cupboard. Kitchen has a good range of modern units with built-in 'Bosch' hob and oven, space for washing machine and fridge freezer, ample cupboards and display shelving. The window offers a super view to Lewes Castle. The lounge/dining room has two windows over Southover High Street, Fireplace (currently blocked) with display shelving to either side, full wall of 'stylish feature' storage units. Bedroom with window looking directly to the Castle. Stairs rise to the top floor which has a door to the bathroom, fitted with a white suite comprising of a panelled bath, low-level WC and a pedestal wash hand basin, velux window offering rooftop views. Bedroom one has a view across rooftops and the surrounding Downland. Wardrobe with storage above.

The Location

Lewes is the county town of East Sussex, nestled within the South Downs National Park, with a direct fast train service to London. The station offer links to London in just over an hour and Brighton in under 20 minutes. The town offers an excellent range of shops including 2 prime supermarkets, Waitrose and Tesco, along with a variety of independent medieval and Georgian high street shops. Depot Cinema is a new state of the art three screen community cinema screening a variety of new releases, documentaries, classics & films for all the family. Additionally, Lewes offers a wide range of popular cafe's, old inns and restaurants as well as a farmers market held the first weekend of every month. The internationally recognised Glyndebourne Opera House is located approx 4 miles from Lewes. High quality sports facilities including Pool , Track, Tennis as well as County and Regional teams representing Football, Rugby, Cricket and Hockey offering great opportunities for adults and children alike. Highly regarded infant and primary schools are an easy walk as are Priory Secondary School, Sussex Downs College and Lewes Old Grammar School.



Southover High Street, Lewes



First Floor
Approximate Floor Area
550.78 sq ft
(51.17 sq m)

Second Floor
Approximate Floor Area
260.27 sq ft
(24.18 sq m)

Approximate Gross Internal Area = 75.35 sq m / 811.06 sq ft
Illustration for identification purposes only, measurements are approximate, not to scale.



Oakley

Your Sussex Property Expert

Lewes Property Hub
01273 487 444
14a High Street, Lewes BN7 2LN
www.oakleyproperty.com
lewes@oakleyproperty.com

We also have offices in:
Shoreham by Sea
Brighton & Hove
The London Office



A new way of marketing property

Get in touch to book a viewing or valuation of your own property

Agents Notes

Tenure - Share of Freehold, 108
Years remaining
Council Tax Band - C



Please note:

These details have been produced in good faith and are believed to be accurate based upon the information supplied but they are not intended to form part of a contract. All statements contained in these particulars as to this property are made without responsibility on the part of Oakley, the vendors or lessors and are NOT to be relied on as statements or representations of fact. Any intending purchasers must satisfy themselves by inspection or otherwise as to the correctness of each of the statements contained in these particulars. The vendors, Oakley and any person who work in their employment do not have any authority to make or give any representation or warranty. The floor plan is for illustrative purposes only and the accuracy cannot be relied upon or guaranteed and no responsibility is taken for an error, omission or mis-statement. The total floor area shown has been taken from the EPC.