



Southdowns, Plumpton, East Sussex, BN7 3EB

Asking Price £499,950

Southdowns, Plumpton, East Sussex, BN7 3EB

Three-bedroom extended house located in Plumpton Village Centre.

The Property

This semi-detached property is set at the head of the cul de sac close to the school, shop and village amenities. Mature gardens wrap around the front, side and rear of the property and a mature hedge forms the boundary.

Through the front door is a spacious reception hall with stairs leading to the first floor and a door to the study.

Further door leads into the lounge which has a window to the front and an electric fire set in a stone surround. The kitchen and dining room are open plan with sleek counter tops over ample storage cupboards with modern appliances. Wall mounted Ideal gas boiler, inset Neff oven with hob, integrated dishwasher, 1½ bowl sink. French doors lead to the garden. There is a large utility room with further cupboards and appliance space and a door to the garden. A cloakroom is located here a door leading to the attached shed.

Upstairs on the landing is the hatch to the loft with a ladder, airing cupboard and doors to Bedroom One with a distant view to the countryside and full wall of wardrobes. Bedroom Two has a window to the rear and bedroom three is also to the rear overlooking the garden. The bathroom has a modern suite with full width shower, low level w/c, wash hand basin with vanity cupboards and shelves.

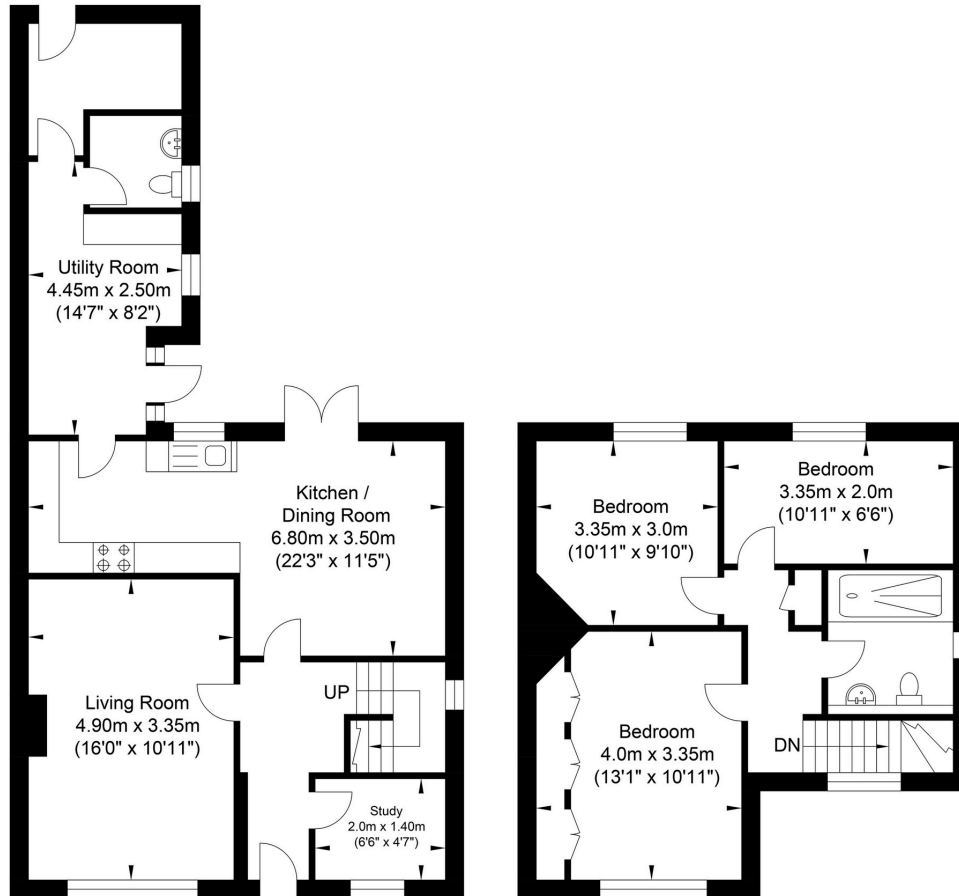
Outside the front garden has a gate and path to the front door. Double side gates open to a gravel area for parking for 3 cars. There is a large, paved patio, extensive lawn and very well stocked shrub borders, Calor gas bottles.

The Location

Plumpton is nestled in the East Sussex countryside and is a vibrant village with good amenities and a choice of village pubs church, school and a village shop. There is also the railway station with trains to London and it is well known for Plumpton race course - bringing people from further afield. Lewes is 5 miles away.



Southdowns, Plumpton Green



Ground Floor
Approximate Floor Area
694.59 sq ft
(64.53 sq m)

First Floor
Approximate Floor Area
458.32 sq ft
(42.58 sq m)

Approximate Gross Internal Area = 107.11 sq m / 1152.92 sq ft
Illustration for identification purposes only, measurements are approximate, not to scale.



Agents Notes

Tenure Freehold
Council Tax Band C

Energy Performance Certificate



Please note:

These details have been produced in good faith and are believed to be accurate based upon the information supplied but they are not intended to form part of a contract. All statements contained in these particulars as to this property are made without responsibility on the part of Oakley, the vendors or lessors and are NOT to be relied on as statements or representations of fact. Any intending purchasers must satisfy themselves by inspection or otherwise as to the correctness of each of the statements contained in these particulars. The vendors, Oakley and any person who work in their employment do not have any authority to make or give any representation or warranty. The floor plan is for illustrative purposes only and the accuracy cannot be relied upon or guaranteed and no responsibility is taken for an error, omission or mis-statement. The total floor area shown has been taken from the EPC.



Oakley

Your Sussex Property Expert

Lewes Property Hub
01273 487 444
14a High Street, Lewes BN7 2LN
www.oakleyproperty.com
lewes@oakleyproperty.com

We also have offices in:
Shoreham by Sea
Brighton & Hove
The London Office



A new way of marketing property

Get in touch to book a viewing or valuation of your own property

