

Dial House, Lewes, East Sussex, BN7 2AF
Asking Price £389,950

Dial House, Lewes, East Sussex, BN7 2AF

A rare chance to purchase a Grade II Listed superbly presented second floor 2 bedroom apartment with an additional study/bedroom 3 located in a traffic free location in Lewes town centre. Views across the Lewes landmarks can be enjoyed from this property.

The Property

The property is in excellent order with a spacious lounge/dining room, with engineered oak flooring and views over the river, kitchen with stone worksurface and ample storage integrated appliances including fridge/freezer, induction hob, oven with extractor hood above, dishwasher and washer dryer. The stairs with feature windows in different directions, lead to the landing and doors lead off to bedroom 1 which faces the front and has a cupboard housing the hot water cylinder, the family bathroom has a panelled bath with a shower over, wash hand basin with cupboard below, low level w/c, heated towel rail and fully tiled walls. The study has a window to the front. Bedroom 2 has a view over the river and has fitted corner wardrobes with hanging and shelves.

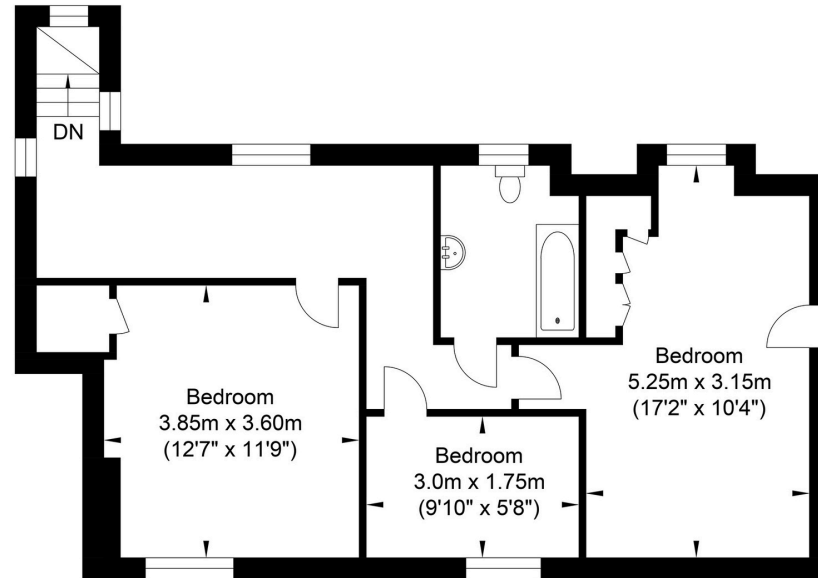
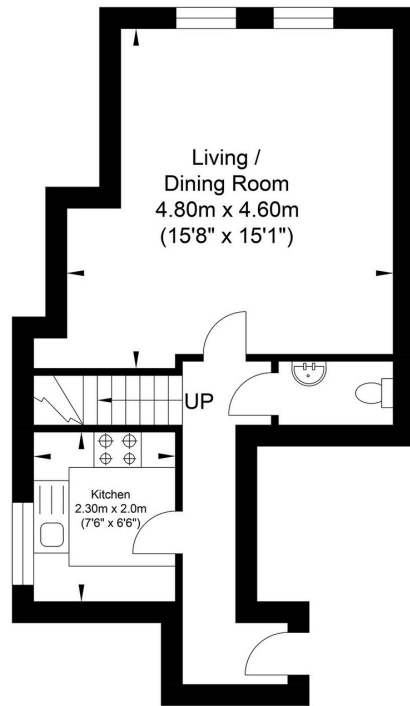
Outside is an allocated parking space and a bike store.

The Location

Lewes is the county town of East Sussex, nestled within the South Downs National Park, with a direct fast train service to London. The station offers links to London in just over an hour and Brighton in under 20 minutes. The town offers an excellent range of shops including 2 prime supermarkets, Waitrose and Tesco, along with a variety of independent medieval and Georgian fronted high street shops. The Depot Cinema is a new state of the art three screen community cinema screening a variety of new releases, documentaries, classics & films for all the family. Additionally, Lewes offers a wide range of popular cafes, old inns and restaurants as well as a farmers market held the first and third weekend of every month. The internationally recognised Glyndebourne Opera House is located approx 4 miles from Lewes. High quality sports facilities including pool, track & tennis as well as county and regional teams representing football, rugby, cricket and hockey offering great opportunities for adults and children alike. Highly regarded infant and primary schools are an easy walk as are Priory Secondary School, Sussex Downs College and Lewes Old Grammar School.



High Street, Lewes



Second Floor
Approximate Floor Area
360.26 sq ft
(33.47 sq m)

Third Floor
Approximate Floor Area
627.53 sq ft
(58.30 sq m)

Approximate Gross Internal Area = 91.77 sq m / 987.80 sq ft

Illustration for identification purposes only, measurements are approximate, not to scale.



Oakley

Your Sussex Property Expert

Lewes Property Hub
01273 487 444
14a High Street, Lewes BN7 2LN
www.oakleyproperty.com
lewes@oakleyproperty.com

We also have offices in:
Shoreham by Sea
Brighton & Hove
The London Office



A new way of marketing property

Get in touch to book a viewing or valuation of
your own property

Agents Notes

Tenure: Leasehold
Years remaining: 116 Years
Annual ground rent: £150.00
Annual service charge: £2,000
Council tax band: C



Please note:

These details have been produced in good faith and are believed to be accurate based upon the information supplied but they are not intended to form part of a contract. All statements contained in these particulars as to this property are made without responsibility on the part of Oakley, the vendors or lessors and are NOT to be relied on as statements or representations of fact. Any intending purchasers must satisfy themselves by inspection or otherwise as to the correctness of each of the statements contained in these particulars. The vendors, Oakley and any person who work in their employment do not have any authority to make or give any representation or warranty. The floor plan is for illustrative purposes only and the accuracy cannot be relied upon or guaranteed and no responsibility is taken for an error, omission or mis-statement. The total floor area shown has been taken from the EPC.