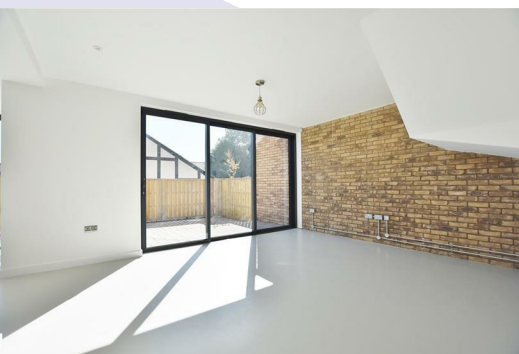


Hale Barns



Stunning contemporary home, finished to the highest standards ideally located in the center of Hale Barns. Modern and thoughtfully designed, with spacious open plan kitchen, dining, living areas complemented by a separate reception room all with full height glazing. Master suite with spacious roof terrace, en-suite shower room, 3 further double bedrooms & 2 bathrooms. Block paved driveway & courtyard, parking bays. UNFURNISHED

£2,750 Per Month



Tel: 01925 600 200

Hale Barns

The Mount



Energy Efficiency Rating		
	Current	Potential
Very energy efficient - lower running costs		
(92 plus) A		
(81-91) B		
(69-80) C		
(55-68) D		
(39-54) E		
(21-38) F		
(1-20) G		
Not energy efficient - higher running costs		
England & Wales	EU Directive 2002/91/EC	

Environmental Impact (CO ₂) Rating		
	Current	Potential
Very environmentally friendly - lower CO ₂ emissions		
(92 plus) A		
(81-91) B		
(69-80) C		
(55-68) D		
(39-54) E		
(21-38) F		
(1-20) G		
Not environmentally friendly - higher CO ₂ emissions		
England & Wales	EU Directive 2002/91/EC	

