



70 Anton Way

| Aylesbury | Buckinghamshire | HP21 9TE

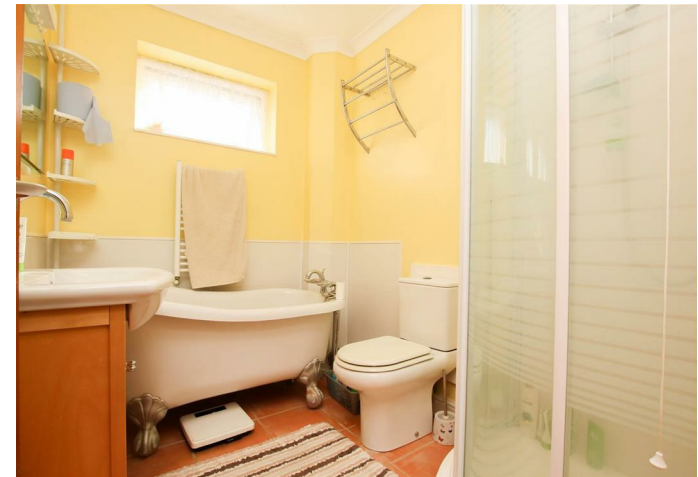


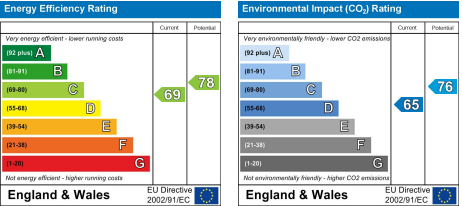
70 Anton Way

| Aylesbury | Buckinghamshire | HP21 9TE

NEW INSTRUCTION!! Williams are delighted to offer this two bedroom terraced property in the popular Hawkslade development of Aylesbury. The property consists of a lounge, kitchen diner, two double bedrooms, one with wardrobes and a family bathroom, rear garden and garage in a separate block. Available 15th August 2025!!

Per annum £1,350 Per annum







Williams Properties
8-10 Temple Street
Aylesbury
Buckinghamshire HP20 2RQ

Email: aylesbury@williams.properties
Web: www.williams.properties
Tel: 01296 435600

For clarification, we wish to inform perspective purchasers that we have prepared these sales particulars as a general guide. We have not carried out a detailed survey, nor tested the services, appliances and specific fittings. Room sizes are approximate and rounded: they are taken between internal wall surface and therefore include cupboards/shelves, etc. Accordingly, they should not be relied upon for carpets and furnishings. Formal notice is also given that all fixtures and fittings, carpets, curtains/blinds and kitchen equipment, whether fitted or not are deemed removable by the vendor unless specifically itemised within these particulars.