



Corfe Close

Bedgrove | Aylesbury | Buckinghamshire | HP21 9UP



Corfe Close

Bedgrove | Aylesbury | Buckinghamshire | HP21 9UP

Welcome to this charming detached bungalow located in a quiet cul de sac location in Bedgrove. This property boasts from a living room, kitchen, dining room, three bedrooms, bathroom and a double garage. Outside there is an enclosed wrap-around rear garden and a double garage.

£675,000

Bedgrove

Bedgrove is a highly desirable Southside residential area with local amenities including Jansel Square comprising of two mini supermarkets, a newsagent, dry cleaners, takeaways, doctors surgery, pharmacy and a local pub. Bedgrove Primary School is highly regarded and adjacent to a large recreational park which includes a community centre, various sporting facilities and a designated dog walking area. Bedgrove offers a regular bus service which connects the town and surrounding areas. Bedgrove also offers easy access to both the A413 towards Amersham and London or the A41 towards Watford and the M25. Bedgrove offers train stations nearby which include both Aylesbury town or Stoke Mandeville linking with London Marylebone. Primary School – Bedgrove & Secondary School – The Grange and catchment to Aylesbury Grammar Schools

Council Tax

Band E

Local Authority

Buckinghamshire Council

Services

All main services available

Entrance Hallway

Enter through the front door into the entrance hallway is comprised of a wall mounted radiator, carpeted flooring, two pendant lights to the ceiling, a frosted window by the front door and doors leading to all three bedrooms, the living room and kitchen.





- Detached Bungalow
- Sought After Rear Location
- Close To Top Schools
- 3 Bedrooms
- Wrap Around Garden
- Viewings Highly Recommended

Bedroom

This master bedroom is comprised of a pendant light to the ceiling and a fitted light to the wall, triple wardrobe, carpeted flooring, a wall mounted radiator and a large window to the front aspect. Space for a double bed and other bedroom furniture.

Bedroom

This bedroom is comprised of a pendant light to the ceiling, carpeted flooring, a window to the side aspect, wall mounted radiator and space for a single bedroom and other bedroom furniture.

Bedroom

This bedroom is comprised of carpeted flooring, a window to the front aspect, pendant light to the ceiling, wall mounted radiator and a double wardrobe. Space for a double bed and other bedroom furniture.

Bathroom

This bathroom is comprised of tiled walls and flooring, a heated towel rail, hand wash basin with a mixer tap inset into a vanity unit, low level w/c, frosted window to the side aspect and an inset shower unit.

Living Room

The living room is comprised of carpeted flooring, spotlights to the ceiling, a window to the rear aspect, wall mounted radiator, feature fireplace, a sliding door to the dining room and space for plenty of living room furniture.



The property is within walking distance to a range of top rated schools including Turnfurlong Infant and Junior School, Bedgrove Infant School and Aylesbury High and Grammar Schools. Shopping and grocery amenities are located on Bedgrove and easily accessible on foot.



Dining Room

This dining room features a fitted light to the ceiling, two wall mounted radiators, carpeted flooring, open plan access to the kitchen and sliding doors to the enclosed rear garden.

Kitchen

This kitchen is comprised of tiled flooring, fitted lights to the ceiling, wall mounted radiator, half height tiling to the walls, a door to the garden side access, window to the side aspect, open plan access to the dining room and a range of wall and base mounted units with roll on worktops, an inset basin with a mixer tap and draining board, double oven, gas hob, extractor and space and plumbing for a washing machine and fridge/freezer.

Garden

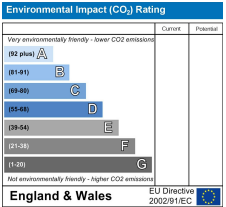
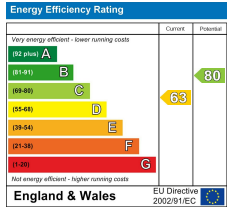
This wrap around enclosed rear garden features a patio area with space for a range of garden furniture, grass lawn and flower beds laid to the remainder.

Garage

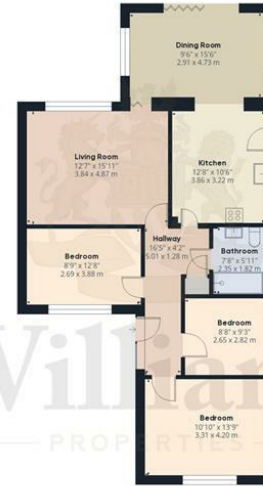
This double garage features space for two vehicles, a door to the garden side access and an up and over door.

Buyer Notes

In line with current AML legislation, all prospective buyers will be asked to provide identification documentation and we would ask for your co-operation in order that there will be no delay in agreeing the sale.







Floor 0 Building 1



Floor 0 Building 2



Approximate total area⁽¹⁾
1244.43 ft²
115.61 m²

(1) Excluding balconies and terraces.

While every attempt has been made to ensure accuracy, all measurements are approximate, not to scale. This floor plan is for illustrative purposes only.

Calculations were based on RICS IPMS 3C standard. Please note that calculations were adjusted by a third party and therefore may not comply with RICS IPMS 3C.

GIRAFFE 360



Williams Properties
8-10 Temple Street
Aylesbury
Buckinghamshire HP20 2RQ

Email: aylesbury@williams.properties
Web: www.williams.properties
Tel: 01296 435600

For clarification, we wish to inform perspective purchasers that we have prepared these sales particulars as a general guide. We have not carried out a detailed survey, nor tested the services, appliances and specific fittings. Room sizes are approximate and rounded: they are taken between internal wall surface and therefore include cupboards/shelves, etc. Accordingly, they should not be relied upon for carpets and furnishings. Formal notice is also given that all fixtures and fittings, carpets, curtains/blinds and kitchen equipment, whether fitted or not are deemed removable by the vendor unless specifically itemised within these particulars.