



32 Bardon Green

| Aylesbury | Buckinghamshire | HP20 2EQ



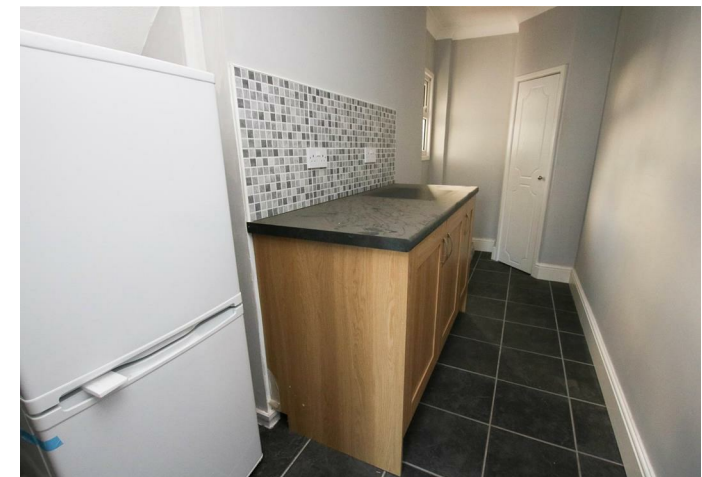
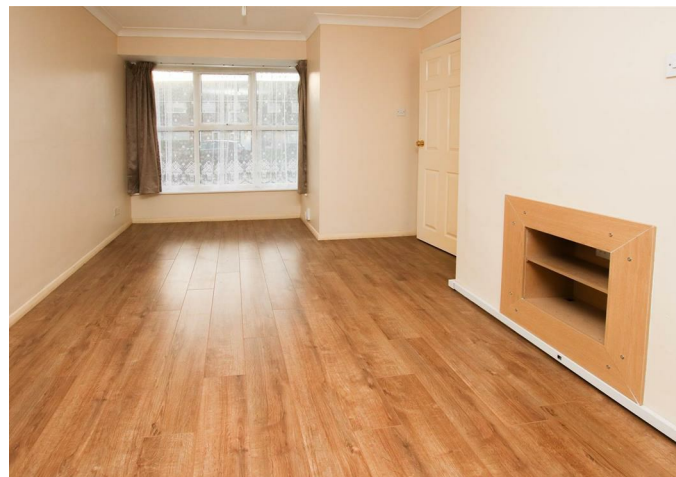
# 32 Bardon Green

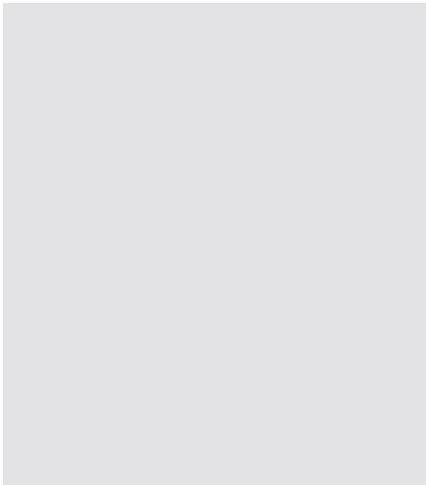
| Aylesbury | Buckinghamshire | HP20 2EQ

NEW INSTRUCTION!!!! Williams are delighted to present a three bedroom family home situated on Elmhurst close to the town centre and Aylesbury Rail Station. The property consists of a spacious lounge area , kitchen with all white goods included and separate utility room, three double bedrooms, family bathroom and a large garden with shed storage space. Available 17th August 2024.

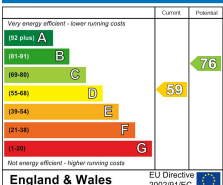
Per month £1,500 Per month

- Three Bedrooms
- Large Garden with a Shed
- Pets Considered!!
- Family Bathroom
- Utility Room
- Newly Refurbished Throughout!

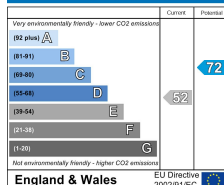




**Energy Efficiency Rating**

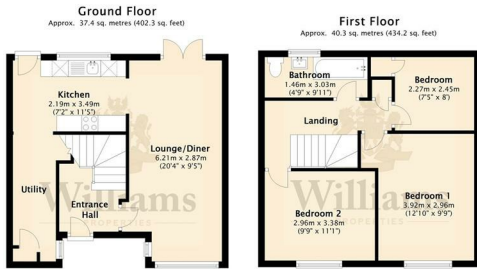


**Environmental Impact (CO<sub>2</sub>) Rating**



England & Wales EU Directive 2002/91/EC

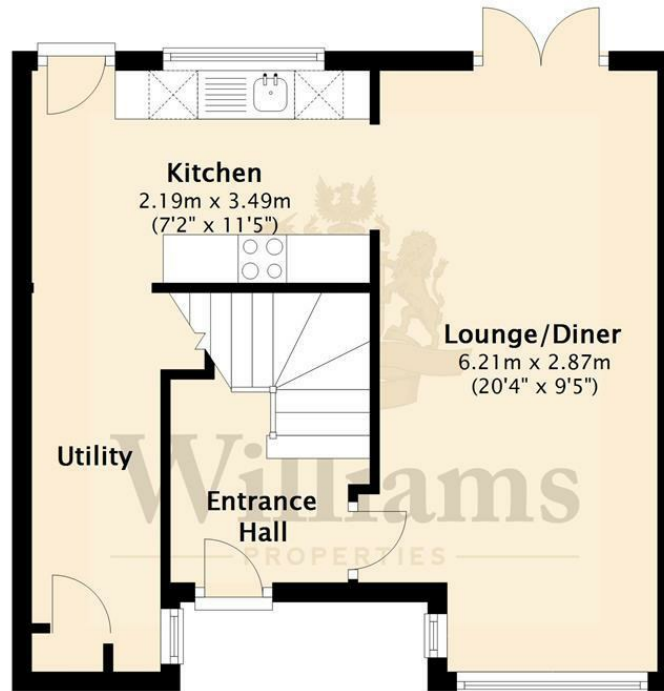
England & Wales EU Directive 2002/91/EC



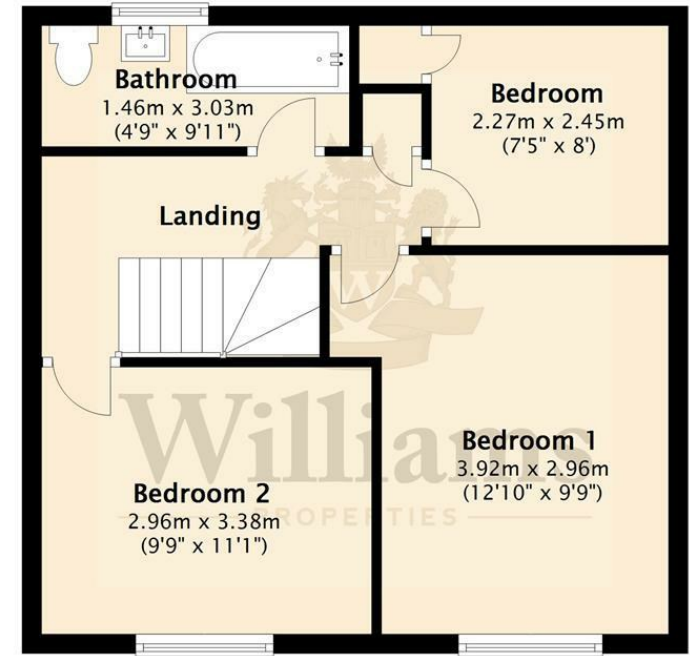
Total area: approx. 77.7 sq. metres (836.6 sq. feet)



**Ground Floor**  
Approx. 37.4 sq. metres (402.3 sq. feet)



**First Floor**  
Approx. 40.3 sq. metres (434.2 sq. feet)



Total area: approx. 77.7 sq. metres (836.6 sq. feet)