



St James House 41a
Aylesbury | Buckinghamshire | HP20 2NB

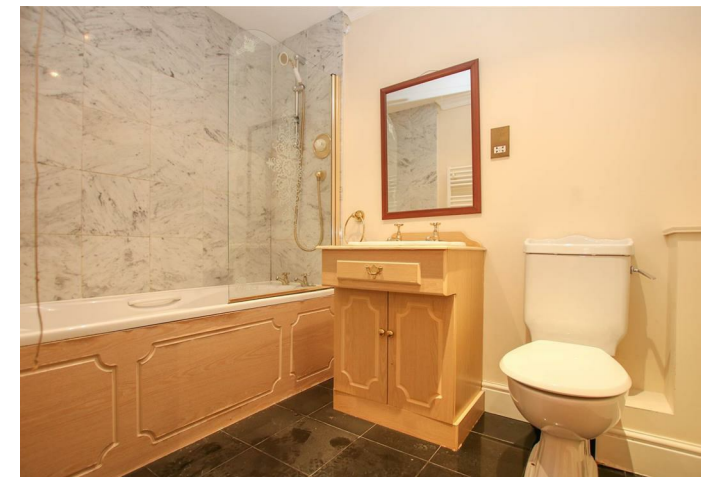


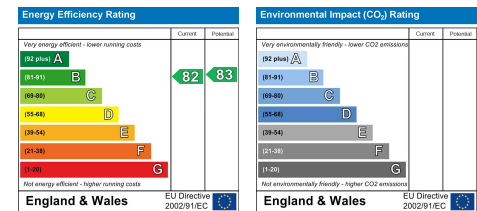
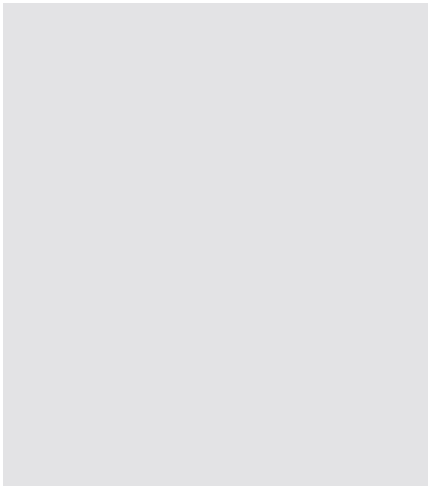
St James House 41a

Aylesbury | Buckinghamshire | HP20 2NB

NEW INSTRUCTION!! Williams are pleased to offer this 2 bedroom apartment situated in the centre of Aylesbury Town Centre. Close to all shops and amenities and train station with links to Marylebone London. The property consists of secure entry phone system, stairs to second floor apartment. entrance hall, wooden flooring throughout, two double bedrooms, new family bathroom with shower over bath, open plan kitchen/lounge/diner, white goods washing machine, dishwasher, fridge/freezer, double glazing, gas under floor heating, parking to rear of property. Available 20th September 2024!! Viewing highly recommended.

Per month £1,300 Per month







Williams Properties
8-10 Temple Street
Aylesbury
Buckinghamshire HP20 2RQ

Email: aylesbury@williams.properties
Web: www.williams.properties
Tel: 01296 435600

For clarification, we wish to inform perspective purchasers that we have prepared these sales particulars as a general guide. We have not carried out a detailed survey, nor tested the services, appliances and specific fittings. Room sizes are approximate and rounded; they are taken between internal wall surface and therefore include cupboards/shelves, etc. Accordingly, they should not be relied upon for carpets and furnishings. Formal notice is also given that all fixtures and fittings, carpets, curtains/blinds and kitchen equipment, whether fitted or not are deemed removable by the vendor unless specifically itemised within these particulars.