



1 Faithfull Close

Stone | Aylesbury || HP17 8PW



Williams
PROPERTIES

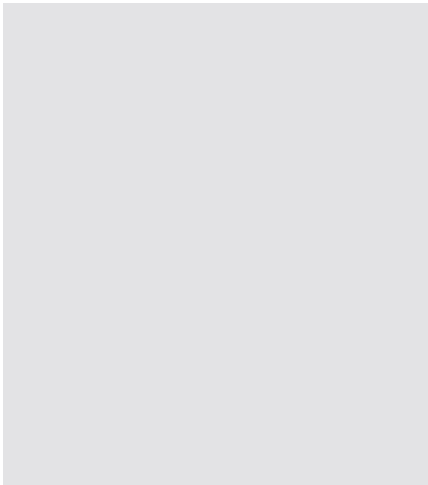
1 Faithfull Close

Stone | Aylesbury | | HP17 8PW

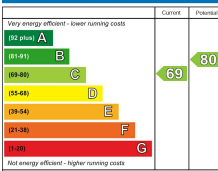
NEW INSTRUCTION!!! Williams are excited to bring to market this extremely well presented 4 bedroom detached property situated in the popular village of Stone close to Aylesbury. The property consists of entrance hall, downstairs wc, kitchen with white goods, utility room, lounge with patio doors leading to private garden, sun awning, dining room, stairs to first floor, master bedroom with en-suite, three further double bedrooms with build in wardrobes to two bedrooms, family bathroom, gas central heating, double glazing, garage and parking for 2 vehicles. available 1st June 2024, suit professional couple or family. Good local schools. Viewing highly recommended.

Per month £2,300 Per month



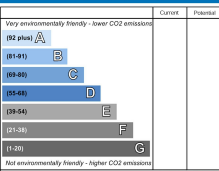


Energy Efficiency Rating



England & Wales EU Directive 2002/91/EC

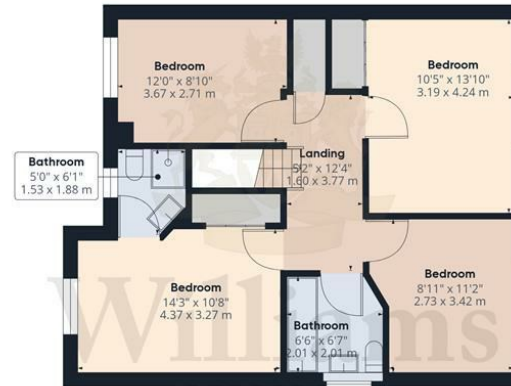
Environmental Impact (CO₂) Rating



England & Wales EU Directive 2002/91/EC



Floor 0



Floor 1



Approximate total area⁽¹⁾
1403.27 ft²
130.37 m²

(1) Excluding balconies and terraces

While every attempt has been made to ensure accuracy, all measurements are approximate, not to scale. This floor plan is for illustrative purposes only.

GIRAFFE 360



Williams Properties
8-10 Temple Street
Aylesbury
Buckinghamshire HP20 2RQ

Email: aylesbury@williams.properties
Web: www.williams.properties
Tel: 01296 435600

For clarification, we wish to inform perspective purchasers that we have prepared these sales particulars as a general guide. We have not carried out a detailed survey, nor tested the services, appliances and specific fittings. Room sizes are approximate and rounded; they are taken between internal wall surface and therefore include cupboards/shelves, etc. Accordingly, they should not be relied upon for carpets and furnishings. Formal notice is also given that all fixtures and fittings, carpets, curtains/blinds and kitchen equipment, whether fitted or not are deemed removable by the vendor unless specifically itemised within these particulars.