



14 Sharps Close

Waddesdon | Aylesbury | Bucks | HP18 0LZ



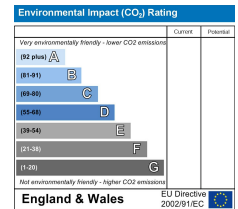
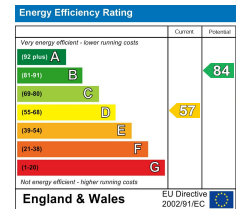
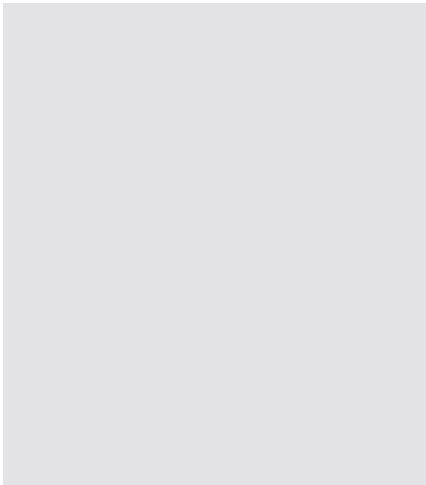
14 Sharps Close

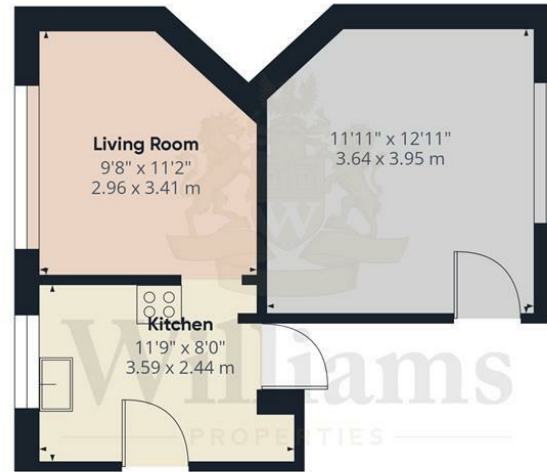
Waddesdon | Aylesbury | Bucks | HP18 0LZ

NEW INSTRUCTION!! Williams are delighted to bring to market this 3 bedroom semi-detached property in the sought after village of Waddesdon, Aylesbury which boasts excellent schools and access to the amazing Waddesdon Manor. The property consists entrance hall, utility room, downstairs w/c, kitchen with white goods, lounge, dining room, stairs to first floor, 3 good size bedrooms, family bathroom with shower over, good size rear garden with shed, gas central heating, double glazing. Viewing highly recommended. Available NOW!!!

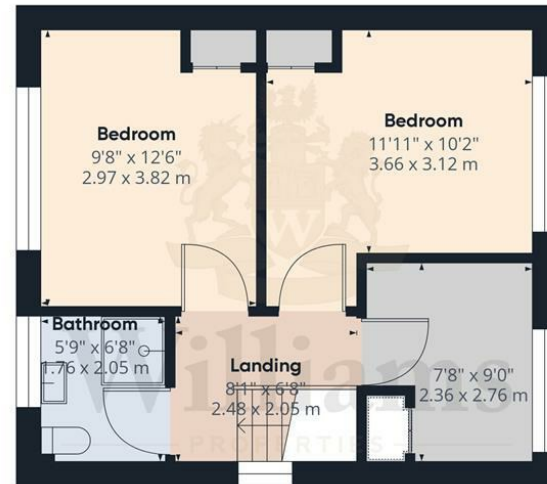
Per month £1,650 Per month







Floor 0



Floor 1



Approximate total area⁽¹⁾
734.51 ft²
68.24 m²

(1) Excluding balconies and terraces

While every attempt has been made to ensure accuracy, all measurements are approximate, not to scale. This floor plan is for illustrative purposes only.

GIRAFFE 360



Williams Properties
8-10 Temple Street
Aylesbury
Buckinghamshire HP20 2RQ

Email: aylesbury@williams.properties
Web: www.williams.properties
Tel: 01296 435600

For clarification, we wish to inform perspective purchasers that we have prepared these sales particulars as a general guide. We have not carried out a detailed survey, nor tested the services, appliances and specific fittings. Room sizes are approximate and rounded; they are taken between internal wall surface and therefore include cupboards/shelves, etc. Accordingly, they should not be relied upon for carpets and furnishings. Formal notice is also given that all fixtures and fittings, carpets, curtains/blinds and kitchen equipment, whether fitted or not are deemed removable by the vendor unless specifically itemised within these particulars.