



Honeysuckle Place

Weston Turville | Aylesbury | Buckinghamshire | HP22  
5WL





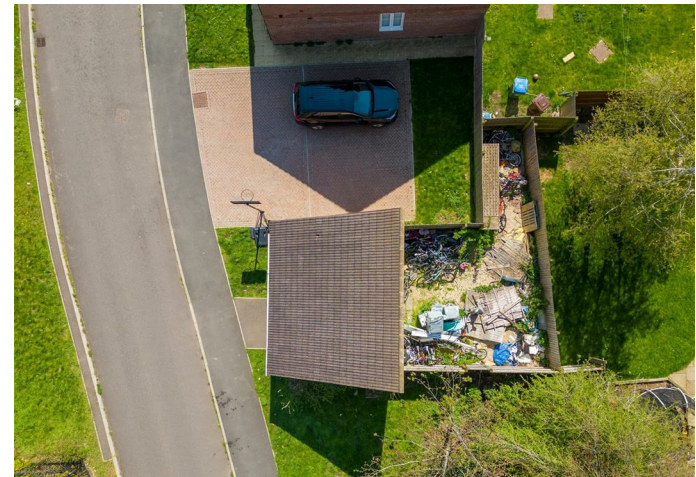
# Honeysuckle Place

Weston Turville | Aylesbury | Buckinghamshire | HP22 5WL

A rare opportunity to purchase this garage with garden space to the rear set within a cul-de-sac in the sought after village of Weston Turville. The elevations are in brick under a mono pitch tiled roof, up and over door, light and power supply. Please call Williams Properties for more information.

## Offers in excess of £75,000

- Garage With Garden Space
- Weston Turville
- Investment Opportunity
- Please Call For Viewings





Garage with up and over door, light and power supply. Rear garden space with gated access to the side.



Energy Efficiency Rating		Current	Potential
Very energy efficient - lower running costs			
(92 plus) <b>A</b>			
(81-91) <b>B</b>			
(69-80) <b>C</b>			
(55-68) <b>D</b>			
(39-54) <b>E</b>			
(21-38) <b>F</b>			
(1-20) <b>G</b>			
Not energy efficient - higher running costs			
England & Wales		EU Directive 2002/91/EC	

Environmental Impact (CO <sub>2</sub> ) Rating		Current	Potential
Very environmentally friendly - lower CO <sub>2</sub> emissions			
(92 plus) <b>A</b>			
(81-91) <b>B</b>			
(69-80) <b>C</b>			
(55-68) <b>D</b>			
(39-54) <b>E</b>			
(21-38) <b>F</b>			
(1-20) <b>G</b>			
Not environmentally friendly - higher CO <sub>2</sub> emissions			
England & Wales		EU Directive 2002/91/EC	

