



St Peters Close Hall Green, Birmingham

- A Larger Style Four Bedroom Detached Family Home
- Two Reception Rooms
- Kitchen/Breakfast Room
- Utility/Home Office
- En Suite To Master & Family Bathroom
- Double Tandem Garage

£425,000

Current EPC Rating TBC
Current Council Tax Band D





Property Description

A larger style four bedroom detached family home situated at the end of a quiet cul-de-sac location, benefiting from ample off-road parking, utility room, two reception rooms, kitchen breakfast room, master en suite shower room, family bathroom, double tandem garage and large rear garden

Tenure

We are advised by the vendor that the property is freehold. We would advise all interested parties to obtain verification through their own solicitor or legal representative

EPC supplied by Nigel Hodges
Current council tax band – D





Rooms & Measurements

Entrance Hall

Lounge to Front - 4.93m x 3.58m (16'2" x 11'9")

Dining Room to Rear - 3.61m x 3.15m (11'10" x 10'4")

Kitchen/Breakfast Room to Rear - 3.07m x 5.89m (10'1" x 19'4")

Guest WC

Master Bedroom to Front - 3.66m x 3.86m (12'0" x 12'8" (into wardrobe)

En Suite Shower Room

Bedroom Two to Rear - 3.15m x 2.31m (10'4" x 7'7")

Bedroom Three to Front - 4.17m x 1.96m (13'8" x 6'5")

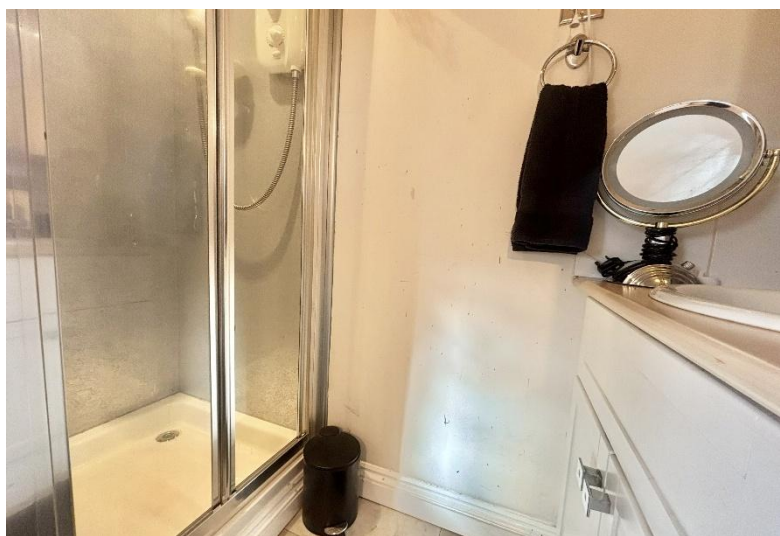
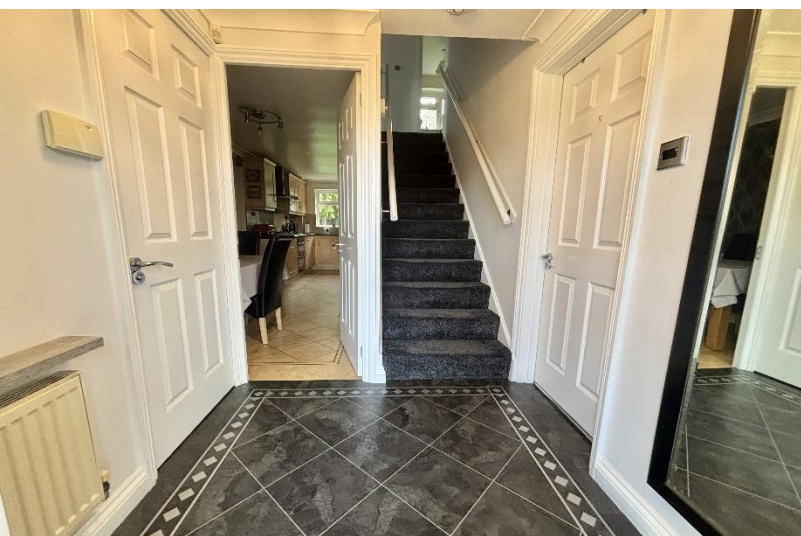
Bedroom Four to Rear - 2.36m x 2.21m (7'9" x 7'3")

Family Bathroom to Rear

Garage

Utility Room/Home Office to Rear - 4.5m x 2.41m (14'9" x 7'11")





316 Stratford Road
Shirley
Solihull
B90 3DN

www.smart-homes.co.uk
0121 744 4144

Agents Note: Whilst every care has been taken to prepare these particulars, they are for guidance purposes only. We believe all information to be correct from the day of marketing however, we advise and recommend that your conveyancer and or surveyor verifies all information supplied. All measurements are approximate are for general guidance purposes only and whilst every care has been taken to ensure their accuracy, they should not be relied upon and potential buyers are advised to recheck the measurements.