



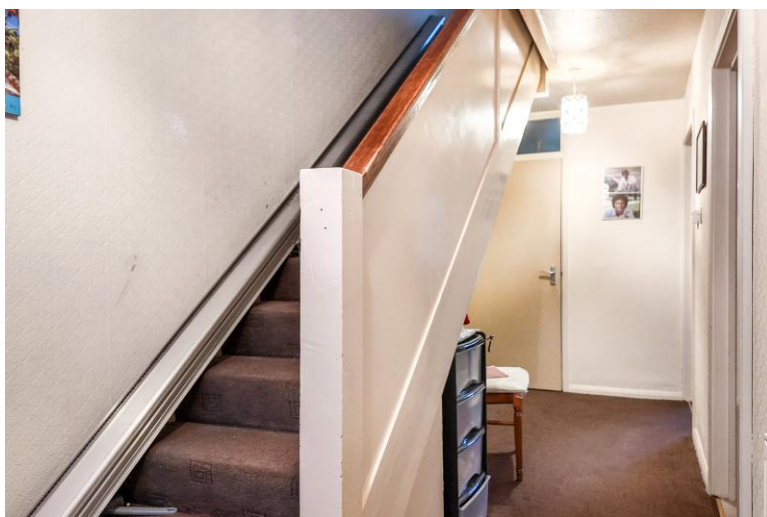
Masons Way Solihull

- A Three Bedroom Mid Terraced Property
- Lounge
- Breakfast Kitchen
- Family Shower Room
- Low Maintenance Rear Garden
- Driveway Parking

£240,000

Current EPC Rating - TBC
Current Council Tax Band - C





Property Description

A spacious mid-terrace family home situated in a most convenient location offering accommodation comprising a spacious lounge, kitchen/diner, guest W.C, three bedrooms, family shower room, low maintenance rear garden and driveway parking

Solihull is situated in the heart of England and is considered to be one of the most highly sought after residential areas in the country boasting a range of local amenities including excellent schools, colleges, parks, restaurants, bars and an excellent variety of shopping centres including Touchwood shopping centre and the new Resorts World. Solihull has convenient road networks linking the M42, M6, M40, M1 and M5 giving easy access to the NEC Arena, Birmingham International Airport and Railway Station.



Rooms & Measurements

Lounge to Front 4.3m x 3.4m (14'1" x 11'1")

Kitchen/Diner to Rear 4.3m x 3.6m (14'1" x 11'9")

Guest W.C

Bedroom One to Front 4m x 3.3m (13'1" x 10'9")

Bedroom Two to Rear 3.8m x 3.5m (12'5" x 11'5")

Bedroom Three to Front 2.8m x 2.3m (9'2" x 7'6")

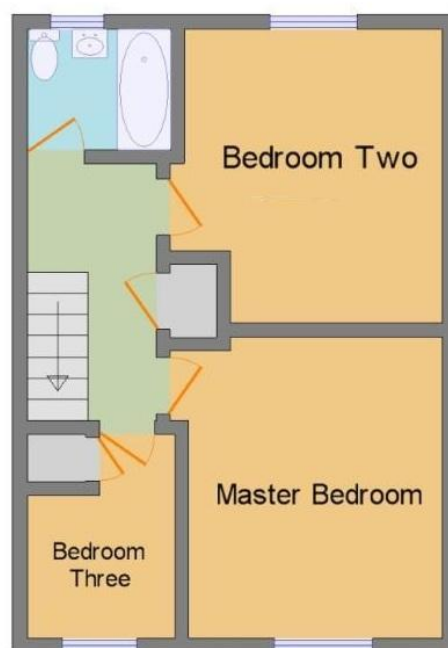
Family Shower Room to Rear 2m x 1.7m (6'6" x 5'6")

Tenure

We are advised by the vendor that the property is freehold, but are awaiting confirmation from the vendor's solicitor. We would advise all interested parties to obtain verification through their own solicitor or legal representative.

EPC supplied by Nigel Hodges.

Current council tax band – C



316 Stratford Road
Shirley
Solihull
B90 3DN

www.smart-homes.co.uk
0121 744 4144

Agents Note: Whilst every care has been taken to prepare these particulars, they are for guidance purposes only. We believe all information to be correct from the day of marketing however, we advise and recommend that your conveyancer and or surveyor verifies all information supplied. All measurements are approximate are for general guidance purposes only and whilst every care has been taken to ensure their accuracy, they should not be relied upon and potential buyers are advised to recheck the measurements.