



## Wixford Grove

Shirley, Solihull

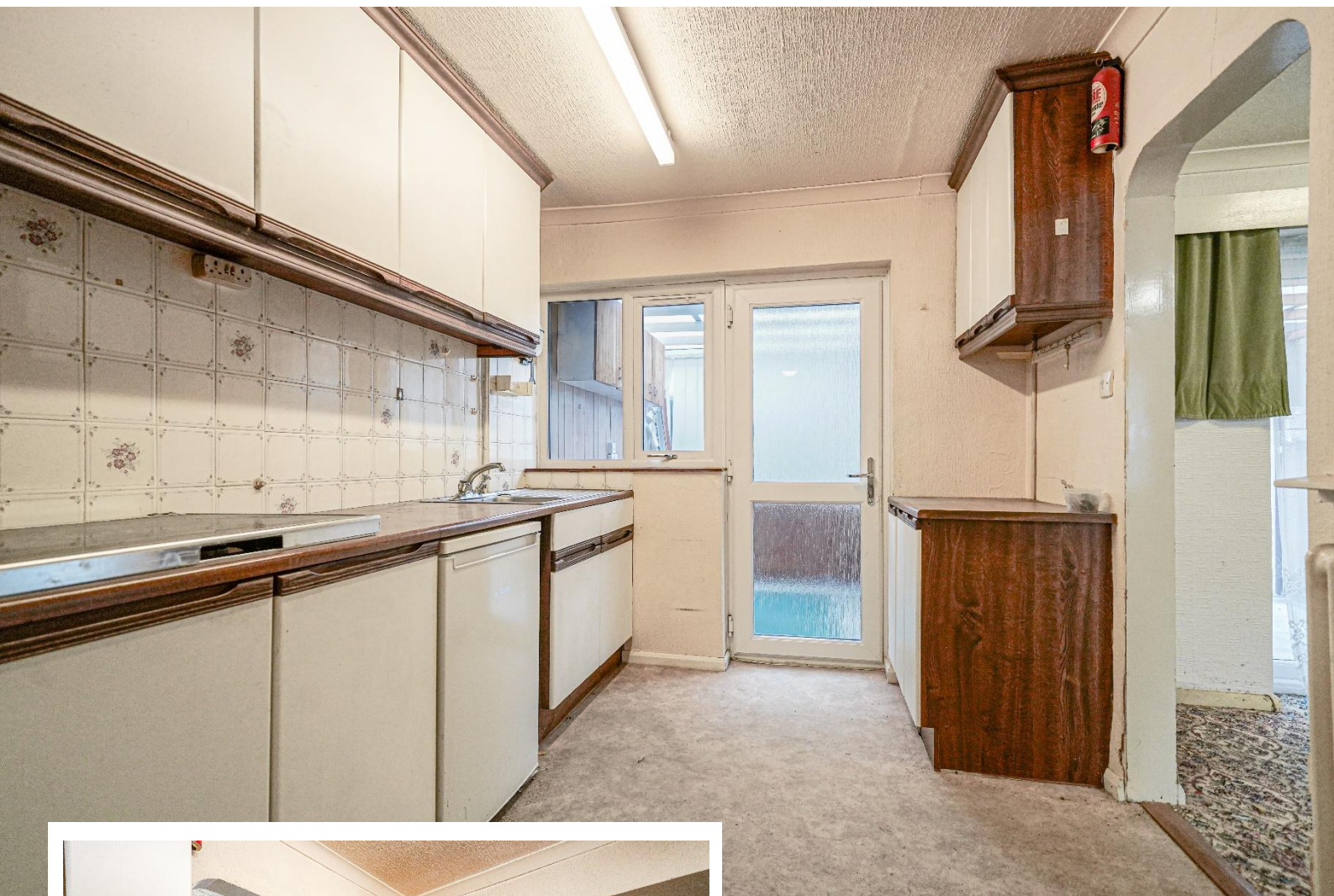
- A Three Bedroom Mid Terrace Property
- In Need Of Modernisation
- Through Lounge Diner
- Currently Within Tudor Grange Academy Catchment
- NO UPWARD CHAIN

**£250,000**

Current EPC Rating 57 (D)  
Current Council Tax Band C







## Property Description

A three bedroom mid terrace property in need of modernisation and currently within the Tudor Grange Academy catchment area, offered for sale with upward chain, through lounge diner, kitchen, family bathroom and rear garden

Shirley is home to a host of leisure and retail facilities. For shopping, Sears Retail Park and Parkgate are packed with an array of popular major retail names, and Shirley high street has a good variety of independently run outlets. Just minutes away you can enjoy the convenience of gymnasiums along with a choice of large supermarkets like Waitrose, Asda, Sainsburys, Aldi and Tesco. Food lovers are spoilt for choice, within walking distance there is a diverse mix of cultural tastes to experience, from fine dining restaurants through to numerous cafés and bars. Local schools include Blossomfield Infant and Nursery School, Haslucks Green Junior School, Our Lady of the Wayside Catholic Primary School, Tudor Grange Primary Academy St James, Light Hall Secondary School, Tudor Grange Academy and Alderbrook School and Sixth Form to name but a few. Commuters are particularly served well, with regular bus and train services and easy access to Junction 4 of the M42.





## Rooms & Measurements

### Entrance Hall

**Kitchen to Rear** - 3.6m x 2.4m (11'9" x 7'10")

**Through Lounge Diner** - 6.2m x 3.6m (20'4" x 11'9")

**Veranda to Rear** - 6m x 2.6m (19'8" x 8'6")

**Bedroom One to Front** - 3.7m x 3.4m (12'1" x 11'1")

**Bedroom Two to Rear** - 4m (to door recess) x 2.5m (13'1" x 8'2")

**Bedroom Three to Front** - 2.6m x 1.9m (8'6" x 6'2")

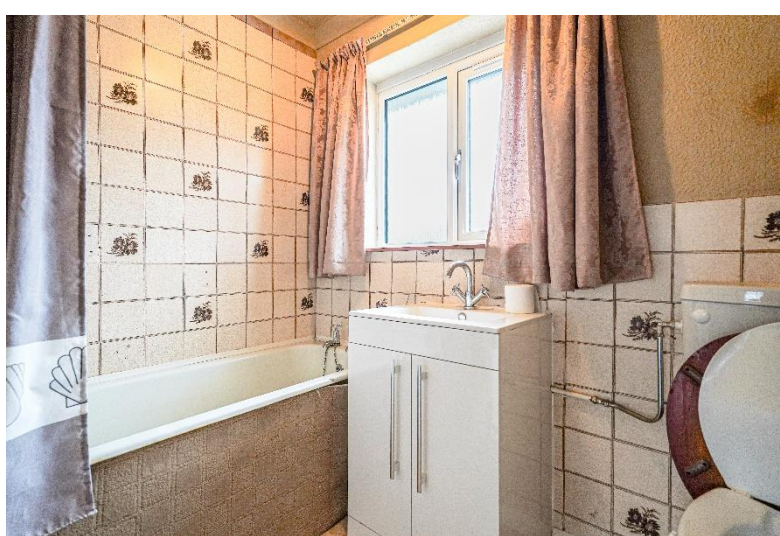
**Bathroom to Rear** - 2.3m x 1.7m (7'6" x 5'6")

### Tenure

We are advised by the vendor that the property is freehold. We would advise all interested parties to obtain verification through their own solicitor or legal representative

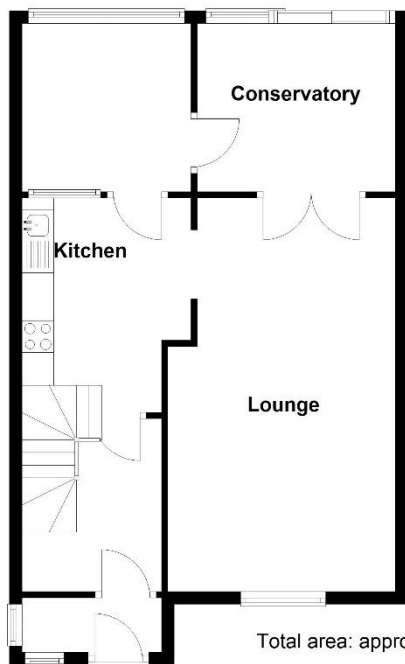
EPC supplied by Nigel Hodges  
Current council tax band – C





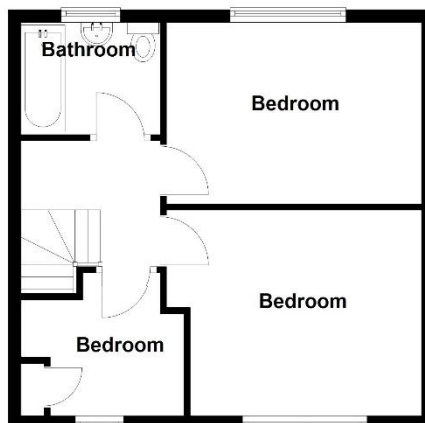
#### Ground Floor

Approx. 55.1 sq. metres (593.2 sq. feet)



#### First Floor

Approx. 39.4 sq. metres (424.4 sq. feet)



Total area: approx. 94.5 sq. metres (1017.6 sq. feet)

316 Stratford Road  
Shirley  
Solihull  
B90 3DN

[www.smart-homes.co.uk](http://www.smart-homes.co.uk)  
0121 744 4144

Agents Note: Whilst every care has been taken to prepare these particulars, they are for guidance purposes only. We believe all information to be correct from the day of marketing however, we advise and recommend that your conveyancer and or surveyor verifies all information supplied. All measurements are approximate are for general guidance purposes only and whilst every care has been taken to ensure their accuracy, they should not be relied upon and potential buyers are advised to recheck the measurements.