

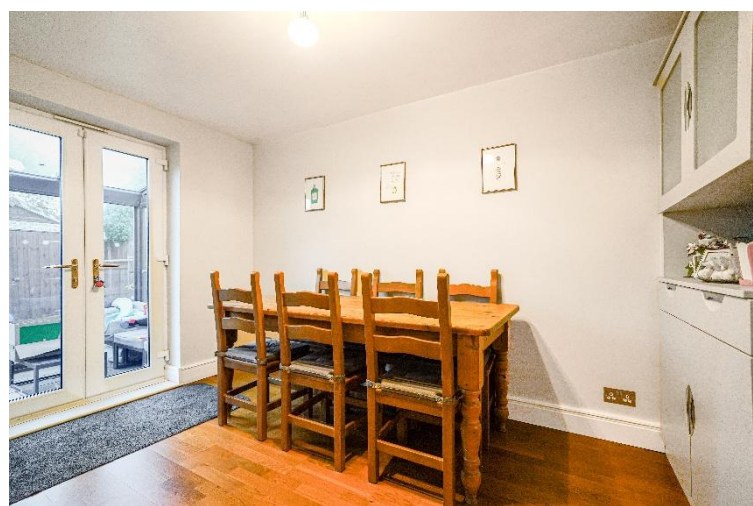


Damford Close Hall Green, Birmingham

- A Well Presented Four Bedroom Detached Family Home
- Re-Fitted Kitchen/Diner & Two En-Suite Shower Rooms
- Ample Driveway Parking & Rear Garden
- Spacious Lounge & Home Office

£500,000

Current EPC Rating - C
Current Council Tax Band - E





Property Description

A very well presented detached family home situated at the end of a cul-de-sac location. Offering accommodation comprising a spacious lounge, superb open plan family kitchen/diner, home office, utility, guest W.C, four good size bedrooms, two en-suite shower room, family bathroom, rear garden with glazed garden room and driveway parking



Rooms & Measurements

Spacious Lounge to Front 5.6m x 3.1m (18'4" x 10'2")

Superb Open Plan Re-Fitted Kitchen/Diner to Rear 7.8m x 3.6m (25'7" x 11'9")

Utility Room 2.2m x 1.3m (7'2" x 4'3")

Home Office to Front 3.3m x 2.3m (10'9" x 7'6")

Bedroom One to Front 3.9m x 3.5m (12'9" x 11'5")

En-Suite Shower Room to Side 2.3m x 1.5m (7'6" x 4'11")

Bedroom Two to Front 4.3m x 2.3m (14'1" x 7'6")

En-Suite Shower Room to Front 2.8m x 2m (9'2" x 6'6")

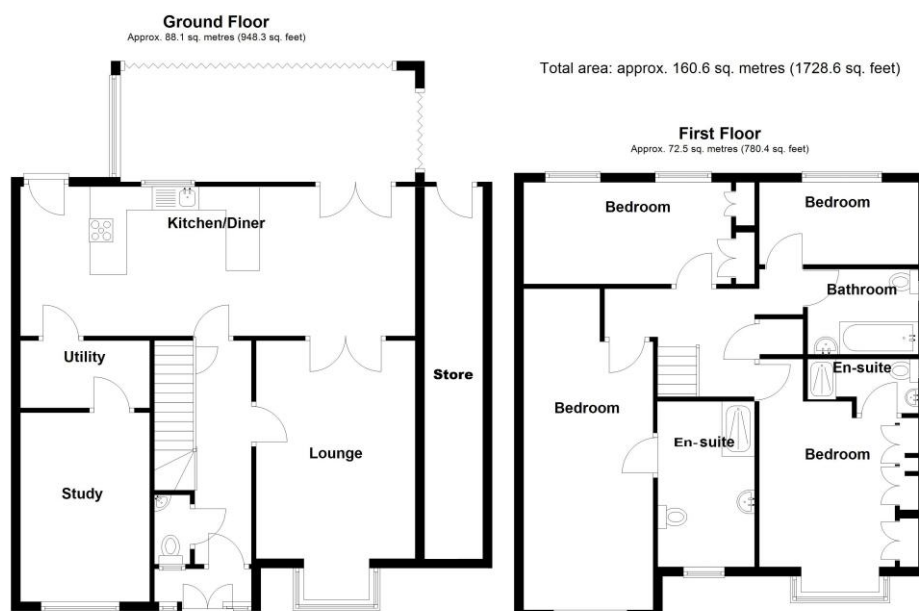
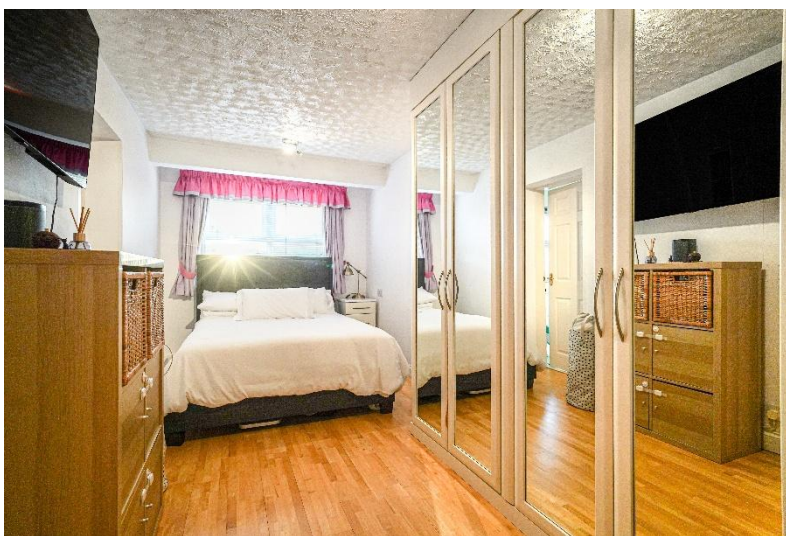
Bedroom Three to Rear 4.4m x 2.8m (14'5" x 9'2")

Bedroom Four to Rear 2.7m x 2.2m (8'10" x 7'2")

Family Bathroom to Side 2.3m x 1.5m (7'6" x 4'11")

Tenure

We are advised by the vendor that the property is freehold. We would advise all interested parties to obtain verification through their own solicitor or legal representative. EPC supplied by Nigel Hodges. Current council tax band – E



316 Stratford Road
Shirley
Solihull
B90 3DN

www.smart-homes.co.uk
0121 744 4144

Agents Note: Whilst every care has been taken to prepare these particulars, they are for guidance purposes only. We believe all information to be correct from the day of marketing however, we advise and recommend that your conveyancer and or surveyor verifies all information supplied. All measurements are approximate are for general guidance purposes only and whilst every care has been taken to ensure their accuracy, they should not be relied upon and potential buyers are advised to recheck the measurements.