



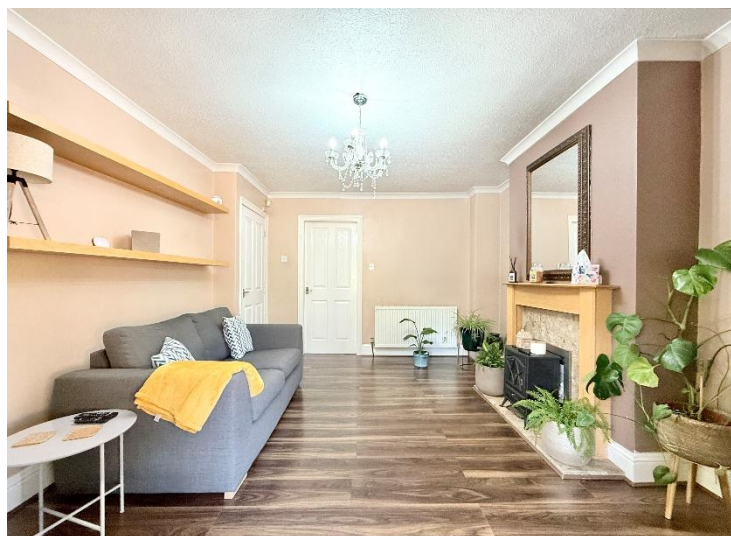
smarthomes

Pineapple Road
Stirchley, Birmingham

- A Well Presented Two Bedroom Family Home
- Fitted Kitchen/Diner & Family Bathroom
- Westerly Facing Rear Garden
- Spacious Lounge & Conservatory

Offers Over £250,000

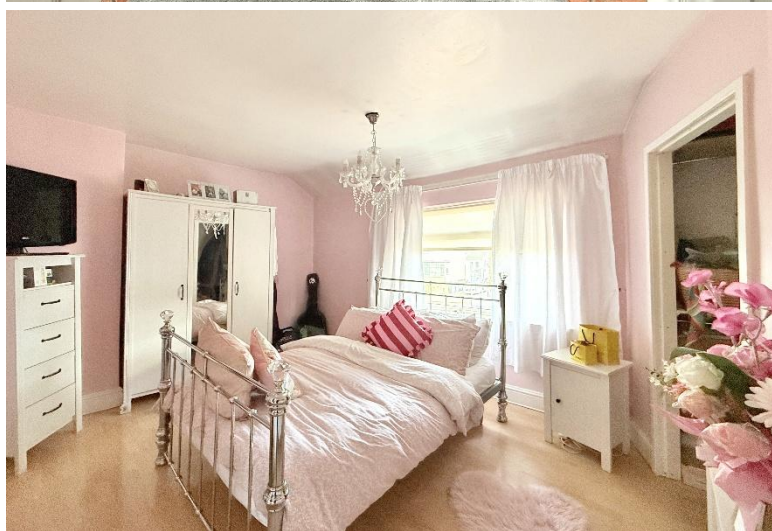
Current EPC Rating - C
Current Council Tax Band - B





Property Description

A well presented and spacious two-bedroom mid-terrace property situated a stones throw from Pineapple Road Train Station due to be opened in early 2026. Offering accommodation comprising lounge, breakfast kitchen, conservatory, four piece family bathroom and Westerly facing rear garden



Rooms & Measurements

Lounge to Front 5.05m x 3.48m (16'7" (into bay) x 11'5")

Breakfast Kitchen 4.47m x 2.74m (14'8" x 9'0")

Conservatory to Rear 3.51m x 2.84m (11'6" x 9'4")

Bedroom One to Front 4.29m x 3.25m (14'1" x 10'8")

Walk-In Wardrobe

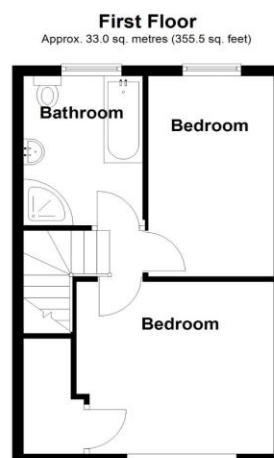
Bedroom Two to Rear 3.84m x 2.77m (12'7" x 9'1")

Spacious Four Piece Family Bathroom 2.82m x 2.13m (9'3" x 7'0" (max)

Tenure

We are advised by the vendor that the property is freehold, but are awaiting confirmation from the vendor's solicitor. We would advise all interested parties to obtain verification through their own solicitor or legal representative.

EPC supplied by Nigel Hodges. Current council tax band – B



Total area: approx. 75.8 sq. metres (816.4 sq. feet)

316 Stratford Road
Shirley
Solihull
B90 3DN

www.smart-homes.co.uk
0121 744 4144

Agents Note: Whilst every care has been taken to prepare these particulars, they are for guidance purposes only. We believe all information to be correct from the day of marketing however, we advise and recommend that your conveyancer and or surveyor verifies all information supplied. All measurements are approximate are for general guidance purposes only and whilst every care has been taken to ensure their accuracy, they should not be relied upon and potential buyers are advised to recheck the measurements.