



Darley Mead Court

Hampton Lane, Solihull

- A Beautifully Presented Two Double Bedroom Apartment
- Re-Fitted Kitchen & Re-Fitted Shower Room
- Beautifully Landscaped Communal Gardens
- Private Covered Balcony

£220,000

Current EPC Rating - C
Current Council Tax Band - C





Property Description

A beautifully presented first floor apartment situated in a most sought after development a short walk from Solihull Town Centre. Offering spacious accommodation comprising lounge/diner with direct access to a private enclosed balcony, re-fitted kitchen, two double bedrooms, re-fitted shower room, ample residents parking via electronic gates and beautifully maintained communal gardens

Solihull is situated in the heart of England and is considered to be one of the most highly sought after residential areas in the country boasting a range of local amenities including excellent schools, colleges, parks, restaurants, bars and an excellent variety of shopping centres including Touchwood shopping centre and Resorts World. Solihull has convenient road networks linking the M42, M6, M40, M1 and M5 giving easy access to the NEC Arena, Birmingham International Airport and Railway Station.



Rooms & Measurements

Spacious Lounge/Diner to Rear 5.99m x 3.48m (19'8" x 11'5")

Private Enclosed Balcony 1.55m x 0.94m (5'1" x 3'1")

Re-Fitted Kitchen to Rear 2.62m x 1.65m (8'7" x 5'5")

Bedroom One to Rear 3.86m x 2.44m (12'8" x 8'0")

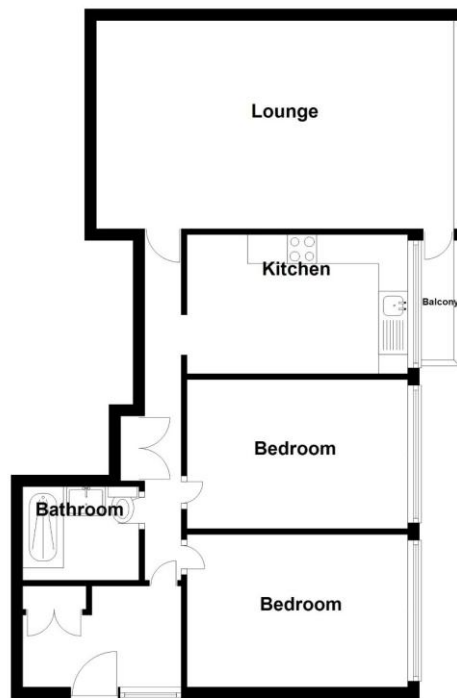
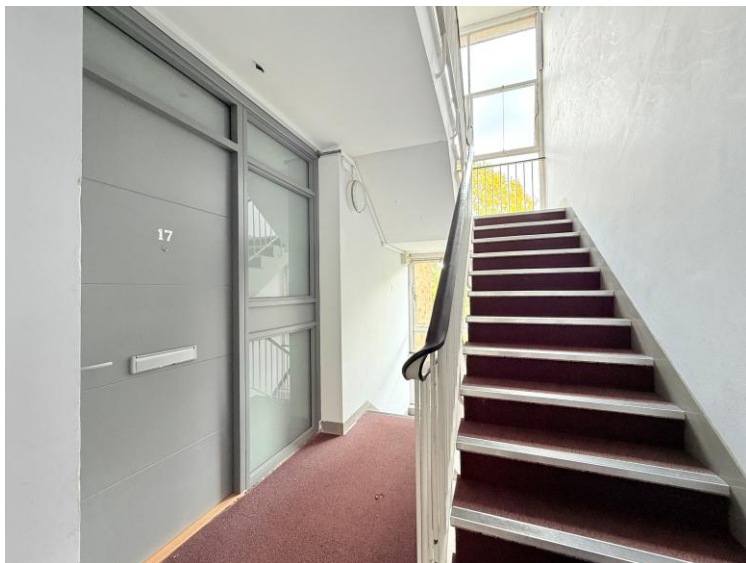
Bedroom Two to Rear 3.99m x 2.9m (13'1" x 9'6")

Re-Fitted Shower Room 1.88m x 1.55m (6'2" x 5'1")

Tenure

We are advised by the vendor that the property benefits from a share of the freehold with a service charge of approx. £1,900 per annum. We would advise all interested parties to obtain verification through their own solicitor or legal representative.

EPC supplied by Nigel Hodges. Current council tax band – C



Total area: approx. 65.5 sq. metres (704.6 sq. feet)

316 Stratford Road
Shirley
Solihull
B90 3DN

www.smart-homes.co.uk
0121 744 4144

Agents Note: Whilst every care has been taken to prepare these particulars, they are for guidance purposes only. We believe all information to be correct from the day of marketing however, we advise and recommend that your conveyancer and or surveyor verifies all information supplied. All measurements are approximate are for general guidance purposes only and whilst every care has been taken to ensure their accuracy, they should not be relied upon and potential buyers are advised to recheck the measurements.