



Arkley Road

Hall Green, Birmingham

- A Well Presented Two Double Bedroom Family Home
- Re-Fitted Kitchen/Diner & Four Piece Family Bathroom
- Low Maintenance West Facing Rear Garden
- Large Summer House/Workshop with Kitchenette & W.C

£230,000

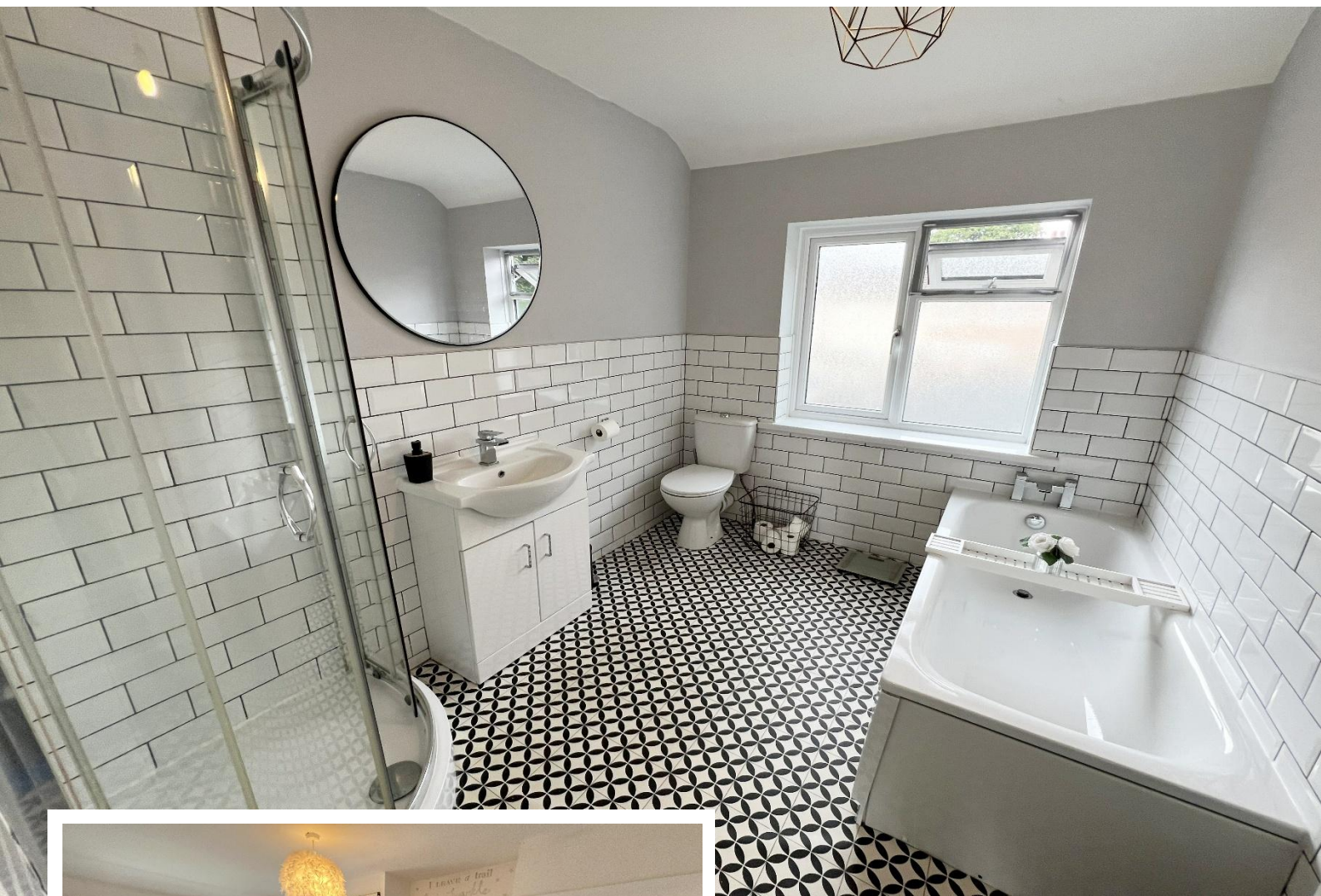
Current EPC Rating - TBC
Current Council Tax Band - B





Property Description

A well presented mid-terrace property ideal for first time buyers benefitting from a large summer house/workshop with kitchen area and W.C ideal for home business. Offering accommodation comprising two double bedrooms, lounge, breakfast kitchen, spacious four piece family bathroom, low maintenance West facing rear garden and driveway parking



Rooms & Measurements

Lounge to Front 4.2m x 3.6m (13'9" x 11'9")

Breakfast Kitchen to Rear 2.7m x 4.5m (8'10" x 14'9")

Bedroom One to Front 4.2m x 3.2m (13'9" x 10'5")

Bedroom Two to Rear 4m x 2.8m (13'1" x 9'2")

Spacious Four Piece Family Bathroom to Rear 2.8m x 2.2m (9'2" x 7'2")

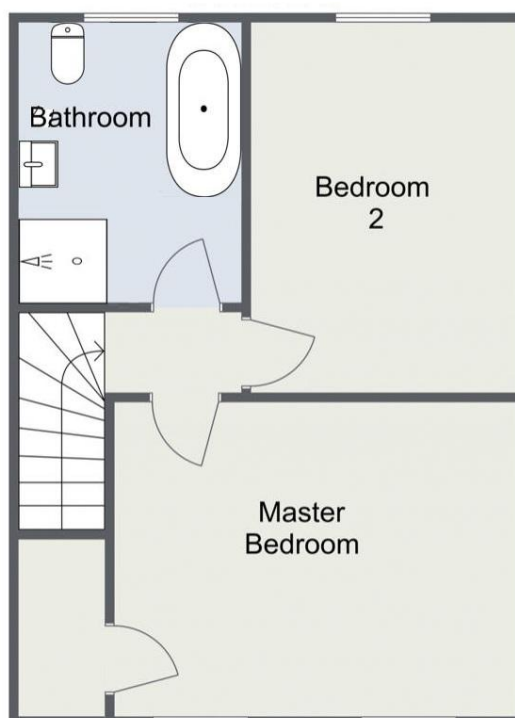
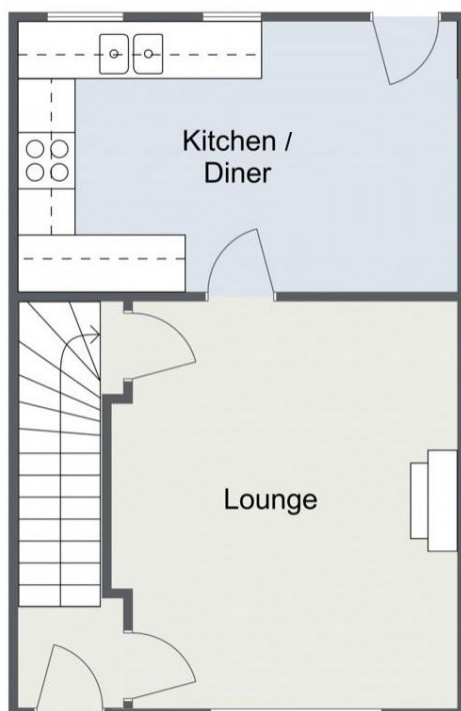
Summer House/Workshop/Home Office 8.2m x 3.2m (26'10" x 10'5")

Tenure

We are advised by the vendor that the property is freehold. We would advise all interested parties to obtain verification through their own solicitor or legal representative.

EPC supplied by Nigel Hodges.

Current council tax band – B



316 Stratford Road
Shirley
Solihull
B90 3DN

www.smart-homes.co.uk
0121 744 4144

Agents Note: Whilst every care has been taken to prepare these particulars, they are for guidance purposes only. We believe all information to be correct from the day of marketing however, we advise and recommend that your conveyancer and or surveyor verifies all information supplied. All measurements are approximate are for general guidance purposes only and whilst every care has been taken to ensure their accuracy, they should not be relied upon and potential buyers are advised to recheck the measurements.