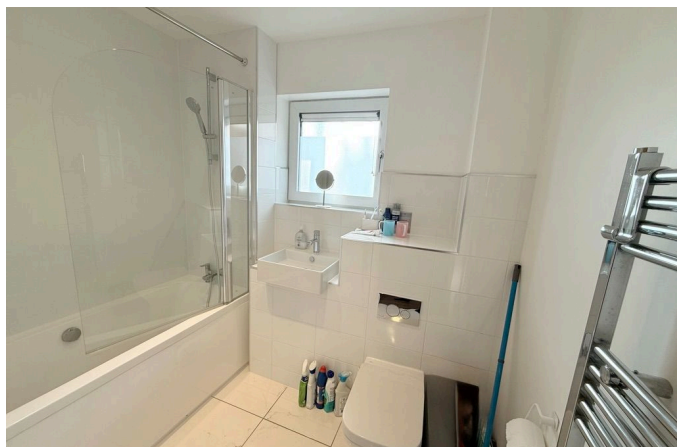
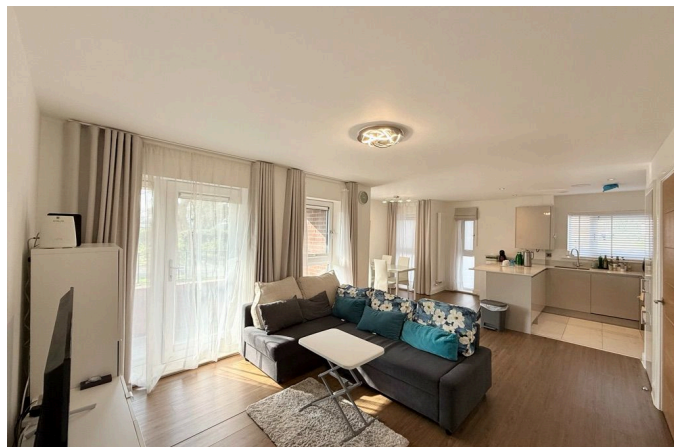
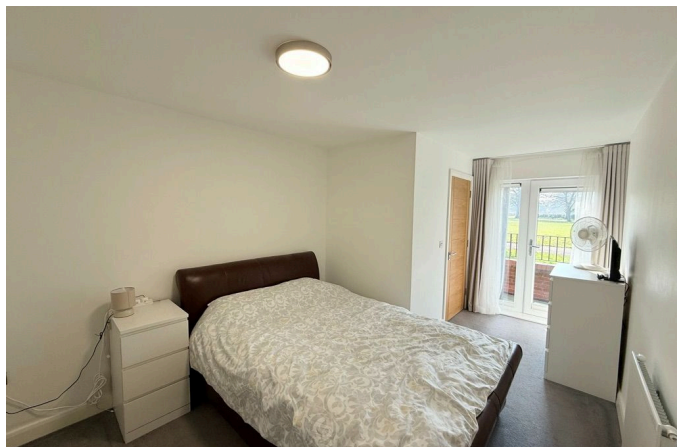


## Oakview, Richard Lewis Way, Shirley, B90 3FX

£305,000

🛏 2 🚿 2 🛋 1

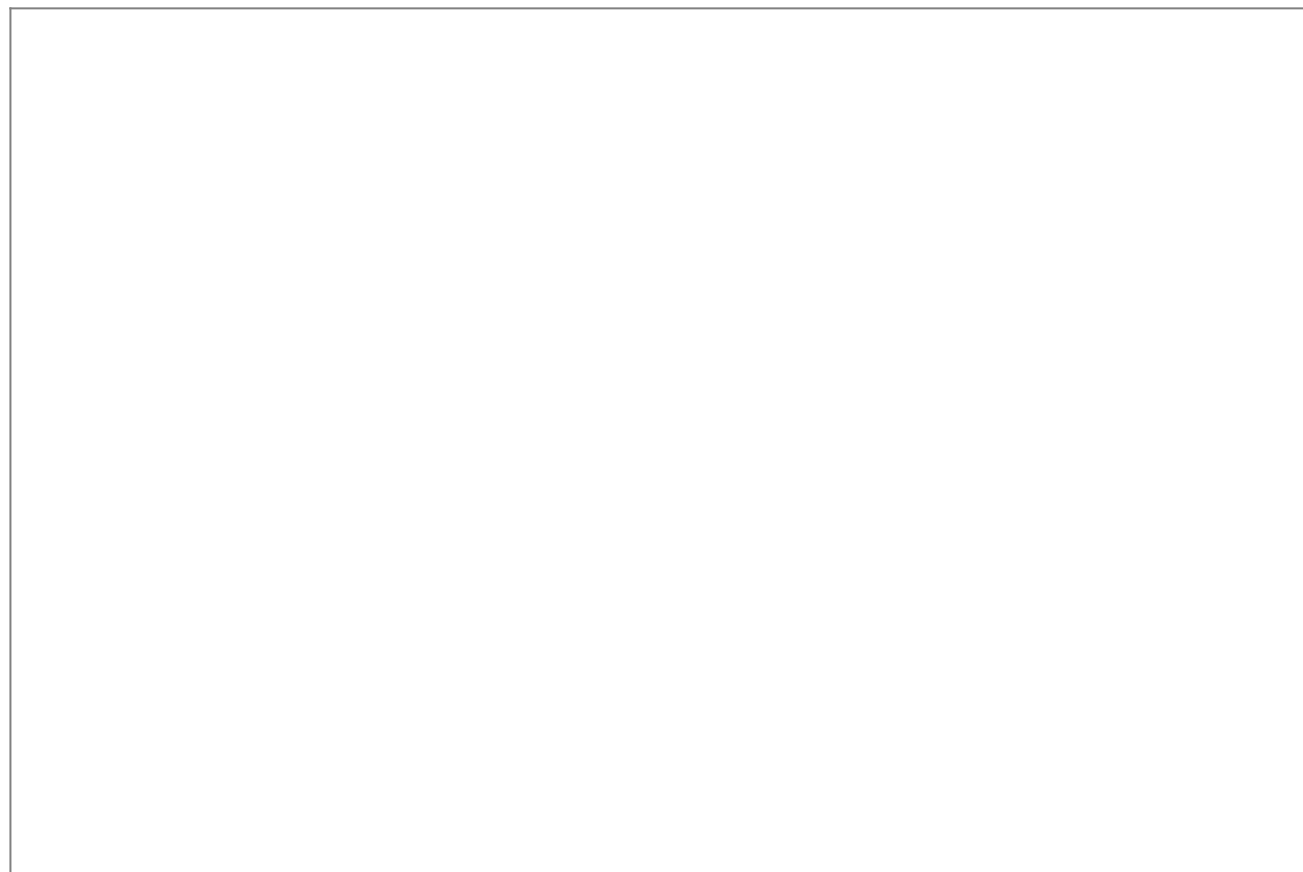


3 Union Road, Shirley, Solihull B90 3BT

**sales • new homes • land • commercial • mortgages • auction**

Registered Company in England and Wales. Company No 03591917  
 Registered Office: smart New Homes Ltd, 3 Union Road, Shirley, Solihull B90 3BT

- Terrace/Balcony Overlooking The Park
- Spacious Open Plan Living
- 2 Double Bedrooms and Ensuite to Master Bedroom
- Secure Allocated Gated Parking
- Build in the Last 5 Years
- Close to Shops, Public Transport, Restaurants, Gym and Bars
- Stunning Fully Fitted Kitchen with Quartz Worktops
- Share in the Freehold with 999 Yr Lease From New
- Video Entry System
- Central Heating and Double Glazing



A modern spacious light and airy stunning apartment around 900 sq ft, overlooking Shirley Park and only built in the last 5 years. Situated in the heart of Shirley this luxury apartment has a spacious open plan lounge, open plan diner and open plan fully equipped fitted kitchen with integrated Bosch appliances. The terrace/balcony is approached off the lounge and master bedroom and overlooks the park. There are 2 double bedrooms, en-suite to master bedroom and

family bathroom. Gas central heating, double glazing, hard flooring throughout and fitted carpets in the bedroom. Gated allocated parking space.