



Wichnor Road Solihull

- A Very Well Presented Two Bedroom Bungalow
- Re-Fitted Kitchen & Re-Fitted Shower Room
- Landscaped Southerly Facing Rear Garden
- No Upward Chain

£275,000

Current EPC Rating - 51
Current Council Tax Band - C





Property Description

A very well presented semi-detached bungalow benefitting from no upward chain and offering accommodation comprising two bedrooms, re-fitted kitchen, spacious lounge/diner, spacious re-fitted shower room, driveway parking and delightful Southerly facing rear garden with garage to rear

Solihull is situated in the heart of England and is considered to be one of the most highly sought after residential areas in the country boasting a range of local amenities including excellent schools, colleges, parks, restaurants, bars and an excellent variety of shopping centres including Touchwood shopping centre and the new Resorts World. Solihull has convenient road networks linking the M42, M6, M40, M1 and M5 giving easy access to the NEC Arena, Birmingham International Airport and Railway Station



Rooms & Measurements

Spacious Lounge/Diner to Rear 5.38m x 3.61m max
(17'8" x 11'10" max)

Re-Fitted Breakfast Kitchen to Rear 4.47m x 1.83m
(14'8" x 6'0")

Bedroom One to Front 3.96m x 3.38m (13'0" x 11'1")

Bedroom Two to Front 2.92m x 2.24m (9'7" x 7'4")

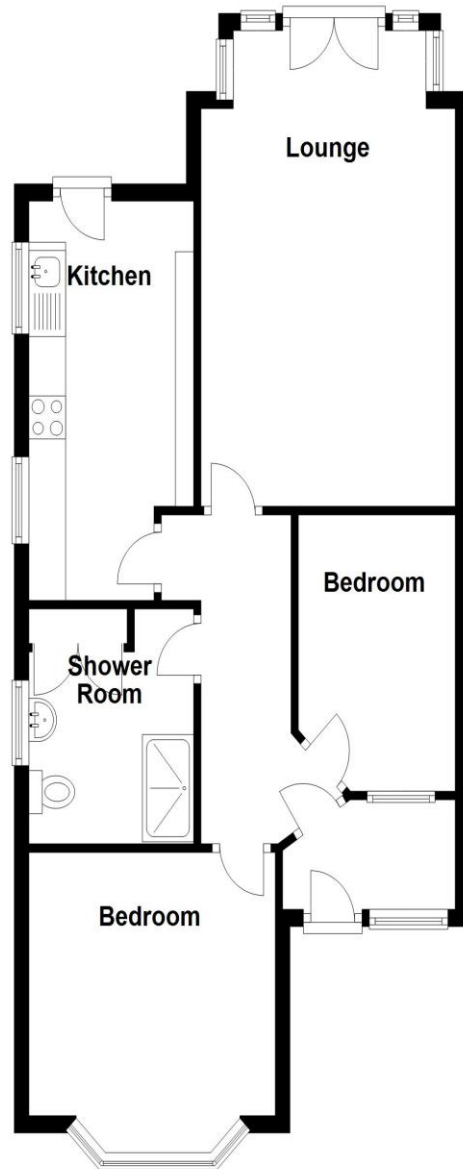
Spacious Re-Fitted Shower Room 2.74m x 2.34m (9'0" x 7'8")

Tenure

We are advised by the vendor that the property is freehold, but are awaiting confirmation from the vendor's solicitor. We would strongly advise all interested parties to obtain verification through their own solicitor or legal representative. EPC supplied by vendor. Council tax band C

Ground Floor

Approx. 62.3 sq. metres (671.0 sq. feet)



Total area: approx. 62.3 sq. metres (671.0 sq. feet)

316 Stratford Road
Shirley
Solihull
B90 3DN

www.smart-homes.co.uk
0121 744 4144

Agents Note: Whilst every care has been taken to prepare these particulars, they are for guidance purposes only. We believe all information to be correct from the day of marketing however, we advise and recommend that your conveyancer and or surveyor verifies all information supplied. All measurements are approximate are for general guidance purposes only and whilst every care has been taken to ensure their accuracy, they should not be relied upon and potential buyers are advised to recheck the measurements.