



smarthomes

Holcombe Road

Tyseley, Birmingham

- A Three Bedroom Mid-Terraced Property
- Lounge
- Fitted Kitchen
- Ground Floor Bathroom

Guide Price £199,000

Current EPC Rating - 75 (C)
Current Council Tax Band - A





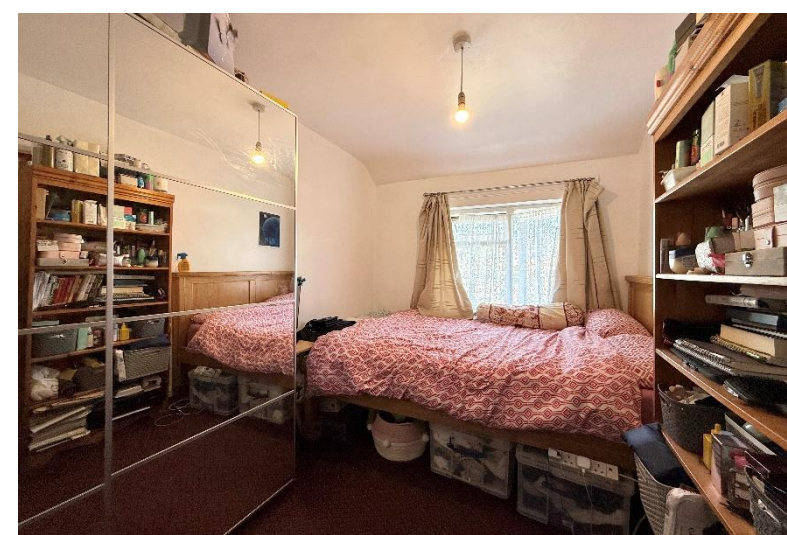
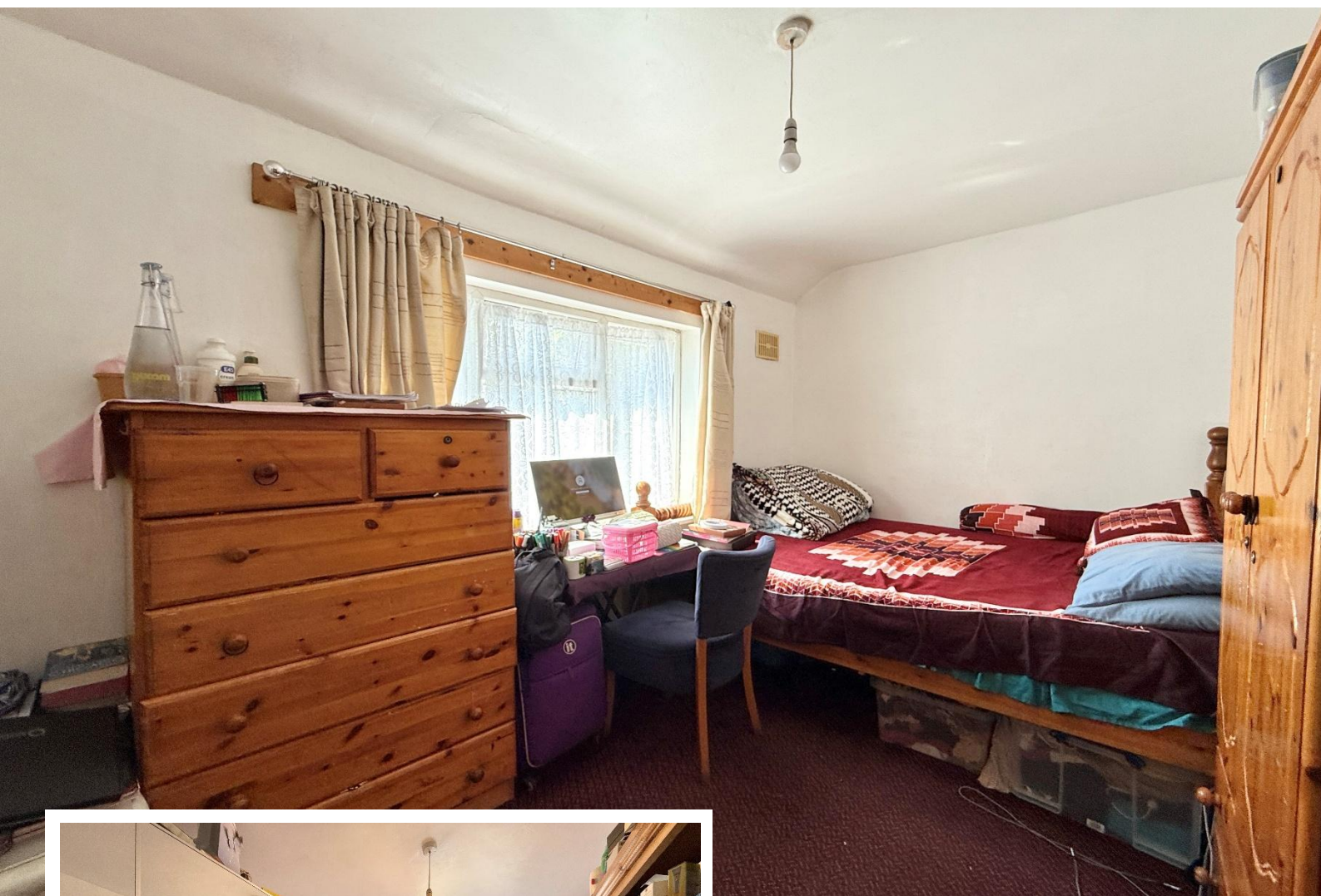
Property Description

A three bedroom mid-terraced property offering lounge, fitted kitchen, ground floor bathroom, good sized rear garden, gas central heating and double glazing

Tenure

We are advised by the vendor that the property is freehold, but are awaiting confirmation from the vendor's solicitor. We would advise all interested parties to obtain verification through their own solicitor or legal representative.

EPC supplied by vendor.
Current council tax band – A



Rooms & Measurements

Lounge to Front - 4.72m x 3.45m (15'6" x 11'4")

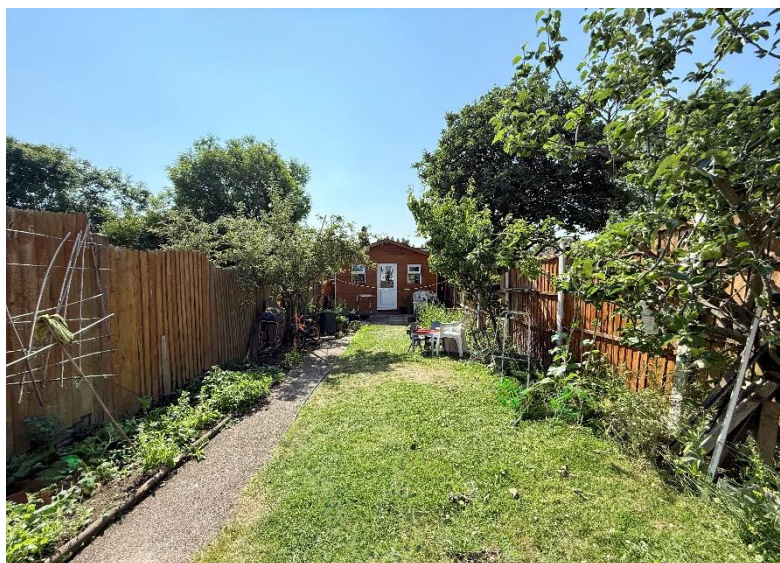
Kitchen to Rear - 3.96m x 4.62m (13'0" (max) x 15'2" (max))

Ground Floor Bathroom - 1.88m x 2.31m (6'2" x 7'7")

Bedroom One to Rear - 3.86m x 2.54m (12'8" x 8'4")

Bedroom Two to Front - 3.38m x 2.36m (11'1" x 7'9")

Bedroom Three to Front - 2.77m x 2.24m (9'1" x 7'4")



316 Stratford Road
Shirley
Solihull
B90 3DN

www.smart-homes.co.uk
0121 744 4144

Agents Note: Whilst every care has been taken to prepare these particulars, they are for guidance purposes only. We believe all information to be correct from the day of marketing however, we advise and recommend that your conveyancer and or surveyor verifies all information supplied. All measurements are approximate and are for general guidance purposes only and whilst every care has been taken to ensure their accuracy, they should not be relied upon and potential buyers are advised to recheck the measurements.