



smarthomes

**Tanworth Lane**

Shirley, Solihull

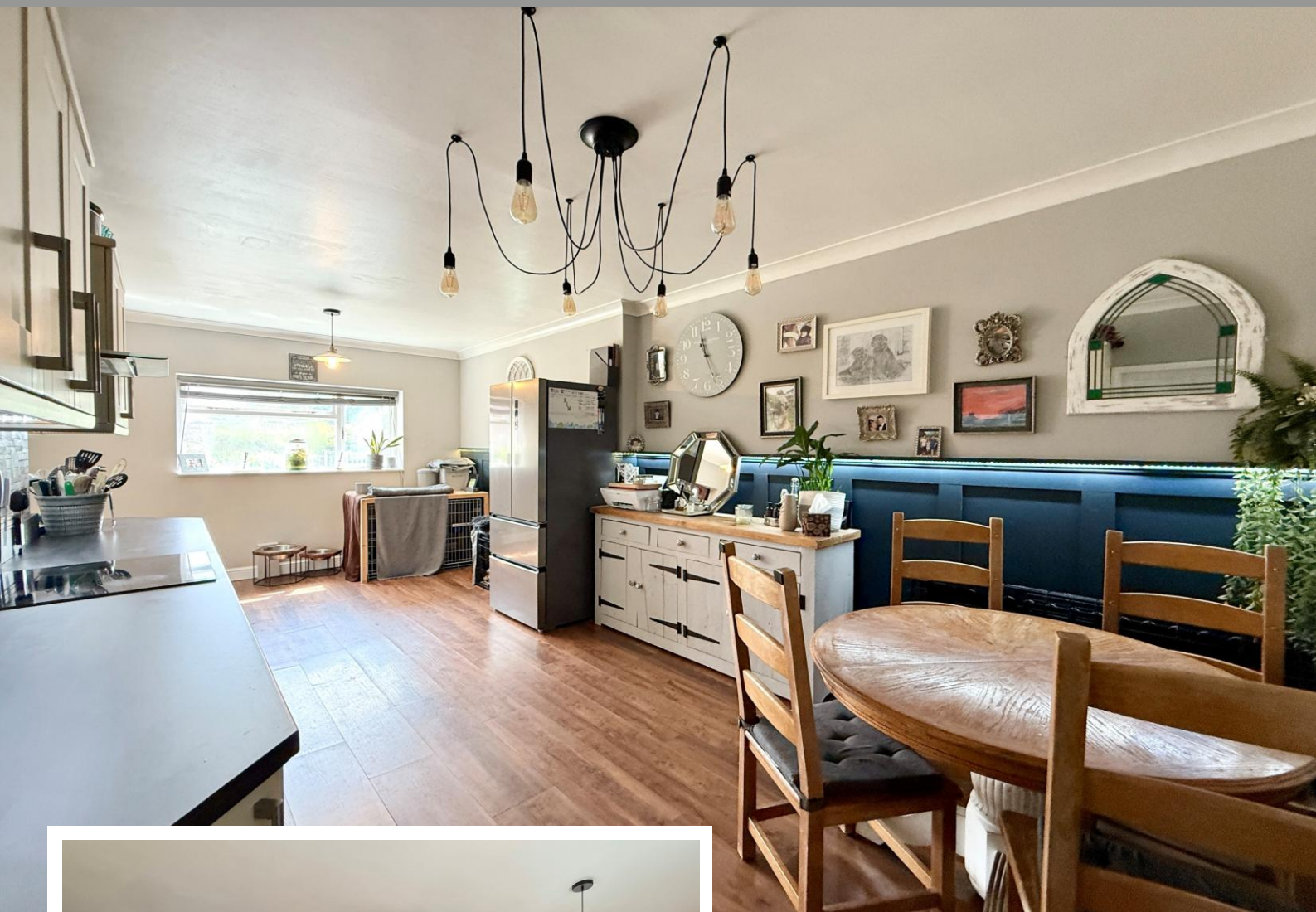
- A Well Presented Four Bedroom Family Home
- Extended Kitchen/Diner & Family Shower Room
- Delightful Landscaped Rear Garden
- Utility Room & Guest W.C

**£385,000**

Current EPC Rating - D  
Current Council Tax Band - C





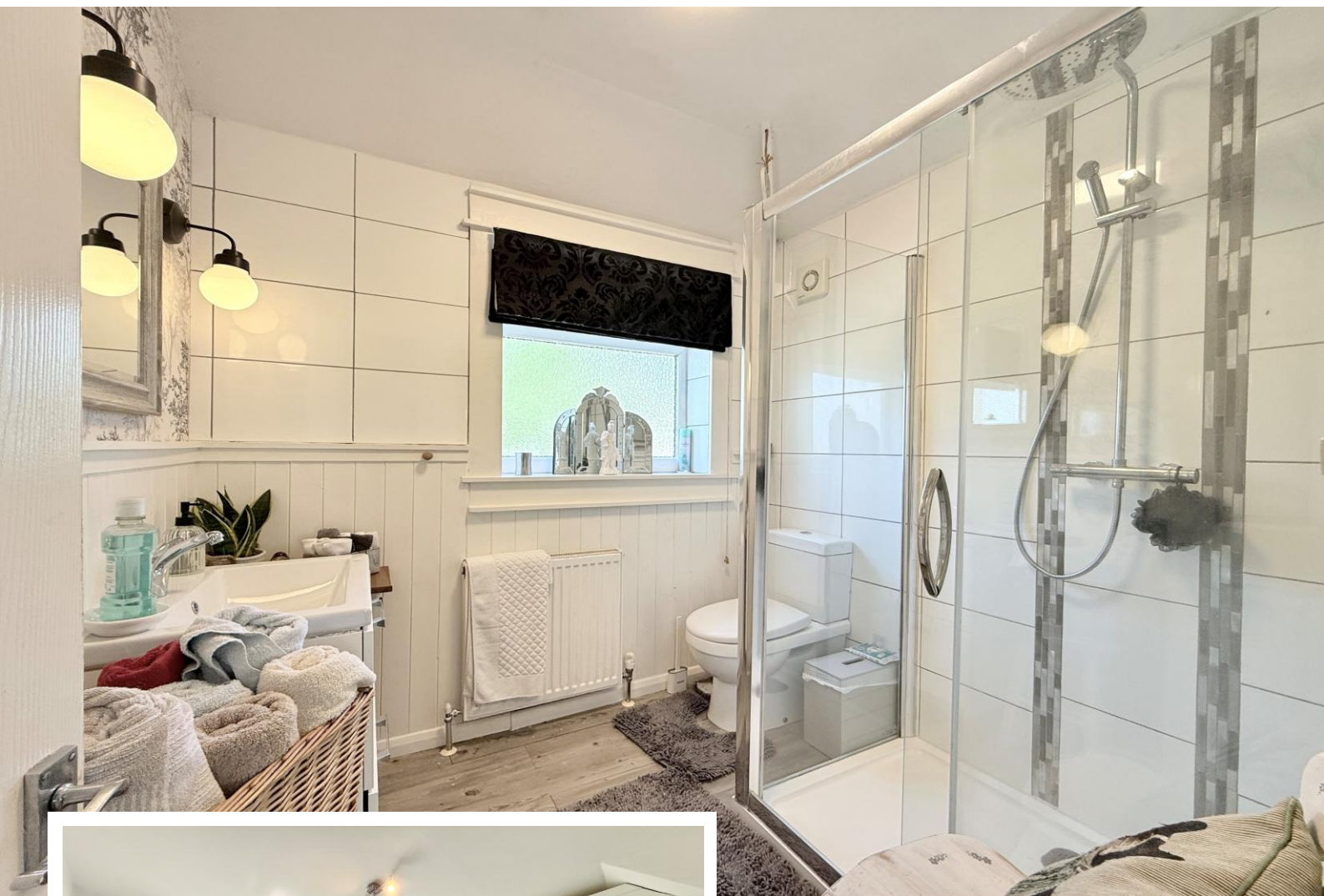


## Property Description

A well presented semi-detached property situated in a most convenient location and offering accommodation comprising an extended L shaped kitchen/diner, lounge, utility/guest W.C, four bedrooms, family shower room, delightful landscaped rear garden and driveway parking

Shirley is home to a host of leisure and retail facilities. For shopping, Sears Retail Park and Parkgate are packed with an array of popular major retail names, and Shirley high street has a good variety of independently run outlets. Just minutes away you can enjoy the convenience of gymnasiums along with a choice of large supermarkets like Waitrose, Asda, Sainsburys, Aldi and Tesco. Food lovers are spoilt for choice, within walking distance there is a diverse mix of cultural tastes to experience, from fine dining restaurants through to numerous cafés and bars. Local schools include Blossomfield Infant and Nursery School, Haslucks Green Junior School, Our Lady of the Wayside Catholic Primary School, Tudor Grange Primary Academy St James, Light Hall Secondary School, Tudor Grange Academy and Alderbrook School and Sixth Form to name but a few. Commuters are particularly served well, with regular bus and train services and easy access to Junction 4 of the M42.





## Rooms & Measurements

Lounge to Front 4.42m x 3.96m (14'6" x 13'0")

Extended L Shaped Kitchen/Diner to Rear 6.48m max x 4.67m max (21'3" max x 15'4" max)

Utility/Guest W.C 4.37m x 1.6m (14'4" x 5'3")

Bedroom One to Rear 3.78m x 3.15m (12'5" x 10'4")

Bedroom Two to Front 3.15m x 2.84m (10'4" x 9'4")

Bedroom Three to Rear 2.64m x 1.57m (8'8" x 5'2")

Family Shower Room to Front 2.16m x 1.96m (7'1" x 6'5")

Second Floor Bedroom Four 4.37m x 3.43m (14'4" x 11'3")

### Tenure

We are advised by the vendor that the property is freehold. We would advise all interested parties to obtain verification through their own solicitor or legal representative.

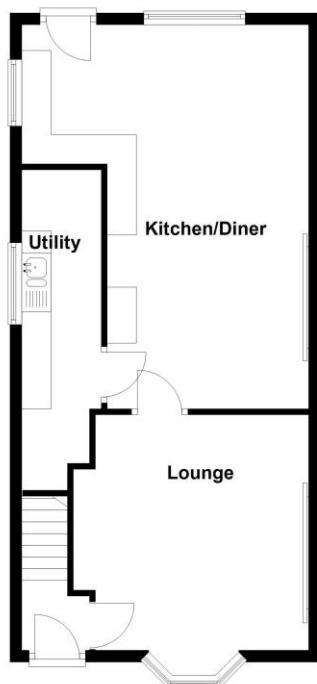
EPC supplied by Nigel Hodges.

Current council tax band – C



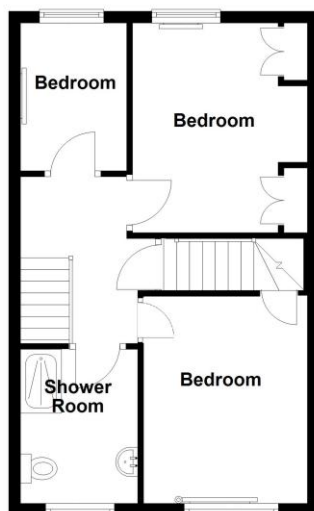


**Ground Floor**  
Approx. 564.9 sq. feet

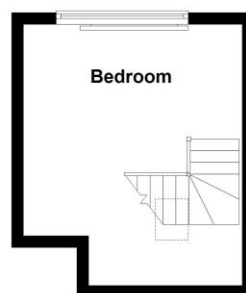


Total area: approx. 1166.6 sq. feet

**First Floor**  
Approx. 432.6 sq. feet



**Second Floor**  
Approx. 169.2 sq. feet



316 Stratford Road  
Shirley  
Solihull  
B90 3DN

[www.smart-homes.co.uk](http://www.smart-homes.co.uk)  
0121 744 4144

Agents Note: Whilst every care has been taken to prepare these particulars, they are for guidance purposes only. We believe all information to be correct from the day of marketing however, we advise and recommend that your conveyancer and or surveyor verifies all information supplied. All measurements are approximate are for general guidance purposes only and whilst every care has been taken to ensure their accuracy, they should not be relied upon and potential buyers are advised to recheck the measurements.