



Brentford Road

Kings Heath, Birmingham

- A Part-Renovated End Of Terrace Property
- Three Bedrooms
- Open Plan Family Dining Kitchen
- Lounge

£295,000

Current EPC Rating 67 (D)
Current Council Tax Band B





Property Description

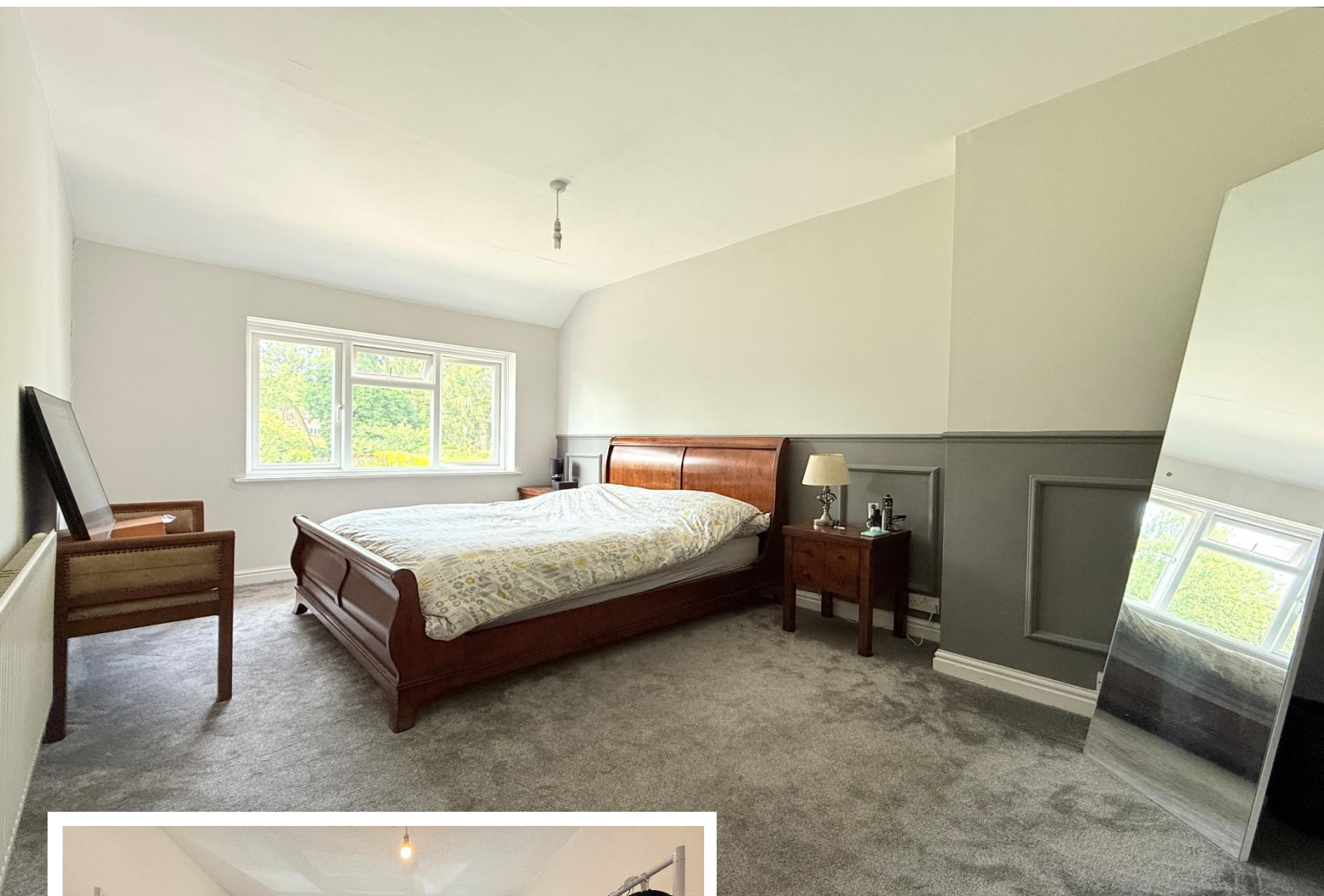
A part-renovated end of terrace property offering accommodation briefly affording three bedrooms, open plan family dining kitchen, lounge, family bathroom, side passage, large rear garden and off road parking

Tenure

We are advised by the vendor that the property is freehold, but are awaiting confirmation from the vendor's solicitor. We would advise all interested parties to obtain verification through their own solicitor or legal representative.

EPC supplied by vendor

Current council tax band – B



Rooms & Measurements

Entrance Hall

Open Plan Family Dining Kitchen to Rear - 4.67m x 5.23m
(15'4" x 17'2")

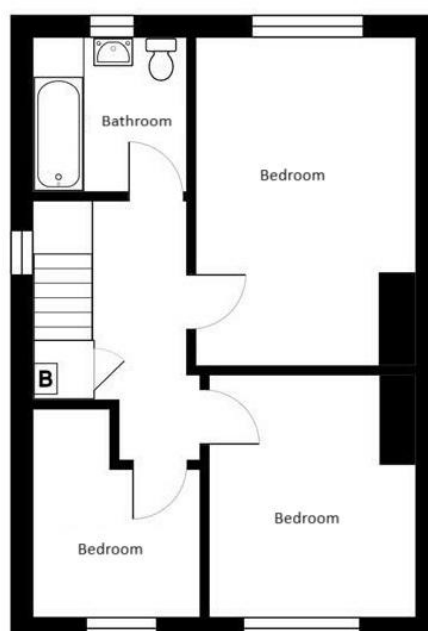
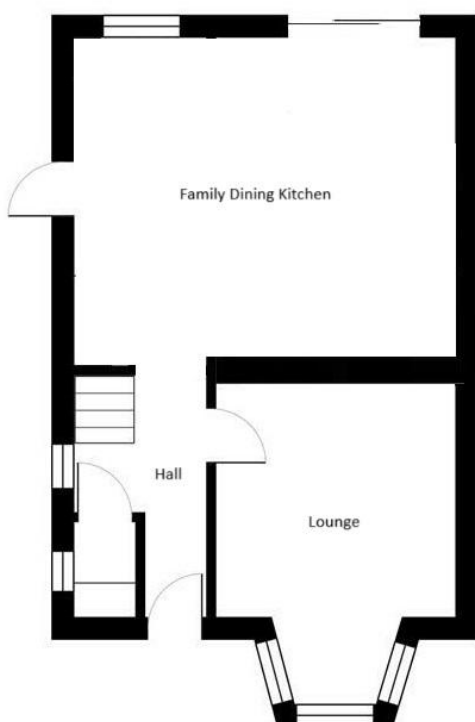
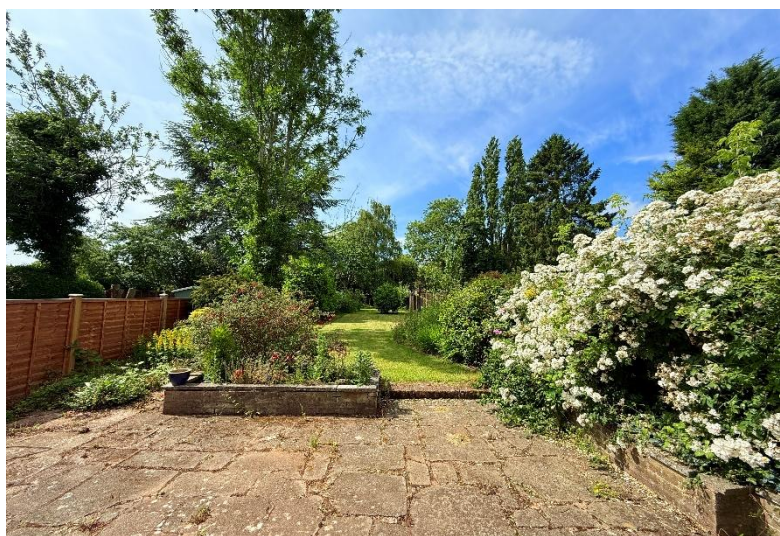
Lounge to Front - 4.14m x 3.28m (13'7" (into bay) x 10'9")

Bedroom One to Rear - 4.57m x 3.07m (15'0" x 10'1")

Bedroom Two to Front - 3.35m x 2.84m (11'0" x 9'4")

Bedroom Three to Front - 2.44m x 2.29m (8'0" x 7'6")

Family Bathroom to Rear - 2.16m x 2.13m (7'1" x 7'0")



316 Stratford Road
Shirley
Solihull
B90 3DN

www.smart-homes.co.uk
0121 744 4144

Agents Note: Whilst every care has been taken to prepare these particulars, they are for guidance purposes only. We believe all information to be correct from the day of marketing however, we advise and recommend that your conveyancer and or surveyor verifies all information supplied. All measurements are approximate are for general guidance purposes only and whilst every care has been taken to ensure their accuracy, they should not be relied upon and potential buyers are advised to recheck the measurements.