



## Petersbourne Court, Petersfield Road

Hall Green, Birmingham

- An Extremely Well Presented First Floor Apartment
- Two Double Bedrooms
- Modern Kitchen
- Garage in Separate Block

**£155,000**

Current EPC Rating - D  
Current Council Tax Band - A







## Property Description

An extremely well presented first floor apartment with accommodation comprising entrance hall, lounge, modern kitchen, two double bedrooms and modern wet room. The property benefits from communal parking, communal gardens and garage in separate block

### Tenure

We are advised by the vendor that the property is leasehold with approx. 87 years remaining on the lease, a service charge of approx. £842.44 per annum and a ground rent of approx. £200 per annum but are awaiting confirmation from the vendor's solicitor. We would advise all interested parties to obtain verification through their own solicitor or legal representative. EPC supplied by Nigel Hodges. Current council tax band – A





## Rooms & Measurements

Private Entrance Hall

Lounge to Front - 4.39m x 3.45m (14'5" x 11'4")

Modern Kitchen to Rear - 3.07m x 1.83m (10'1" x 6'0")

Bedroom One to Rear - 3.43m x 3.07m (11'3" x 10'1")

Bedroom Two to Front - 3.35m x 3.43m (11'0" x 11'3")

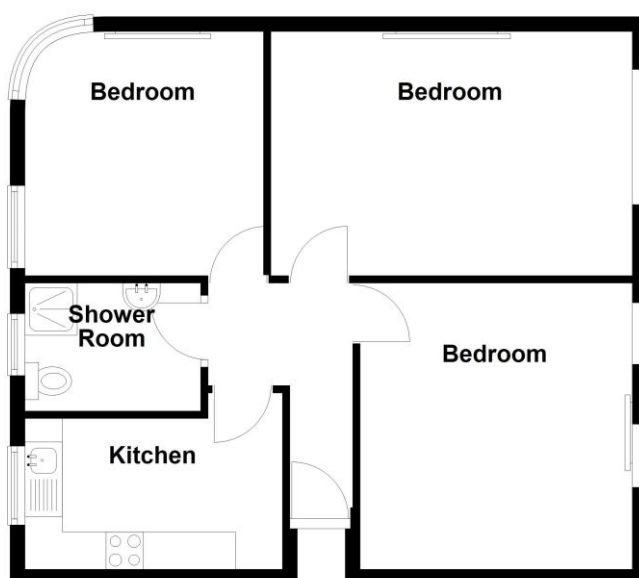
Modern Wet Room to Rear - 2.06m x 1.4m (6'9" x 4'7")





### First Floor

Approx. 624.7 sq. feet



Total area: approx. 624.7 sq. feet

316 Stratford Road  
Shirley  
Solihull  
B90 3DN

[www.smart-homes.co.uk](http://www.smart-homes.co.uk)  
0121 744 4144

Agents Note: Whilst every care has been taken to prepare these particulars, they are for guidance purposes only. We believe all information to be correct from the day of marketing however, we advise and recommend that your conveyancer and or surveyor verifies all information supplied. All measurements are approximate are for general guidance purposes only and whilst every care has been taken to ensure their accuracy, they should not be relied upon and potential buyers are advised to recheck the measurements.