



smarthomes

Dickens Heath Road

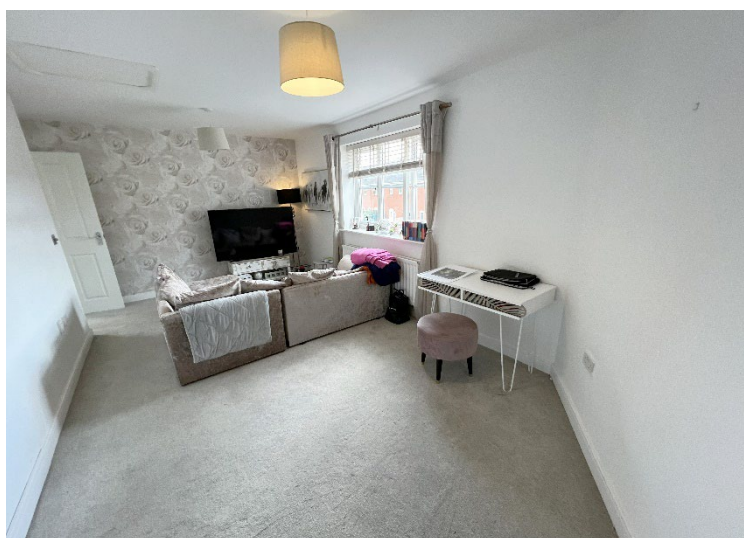
Dickens Heath, Solihull

- A Well Presented One Bedroom Coach House
- Good Sized Living Room
- Re-Fitted Kitchen
- Garage & Allocated Parking Space
- Bathroom
- No Upward Chain

£215,000

Current EPC Rating 58 (D)

Current Council Tax Band B

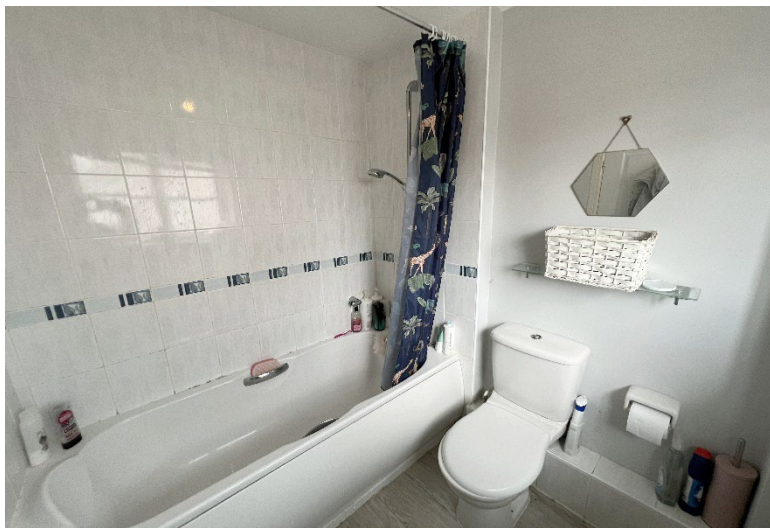




Property Description

A well-presented coach house offered for sale with no upward chain and briefly affording one double bedroom, good sized living room, re-fitted kitchen, bathroom, garage and allocated parking space

Dickens Heath village offers a contemporary life style with a superb range of family homes and apartments, restaurants, offices, shops, medical surgeries as well as a local library, village hall and village green to provide that community lifestyle. Set within easy access to the M42 and train stations the village is ideal for families and commuters.



Rooms & Measurements

Lounge/Diner to Rear - 6.1m x 3m (20'0" x 9'10")

Re-Fitted Kitchen to Front - 4.2m (max) x 2.7m (13'9" x 8'10")

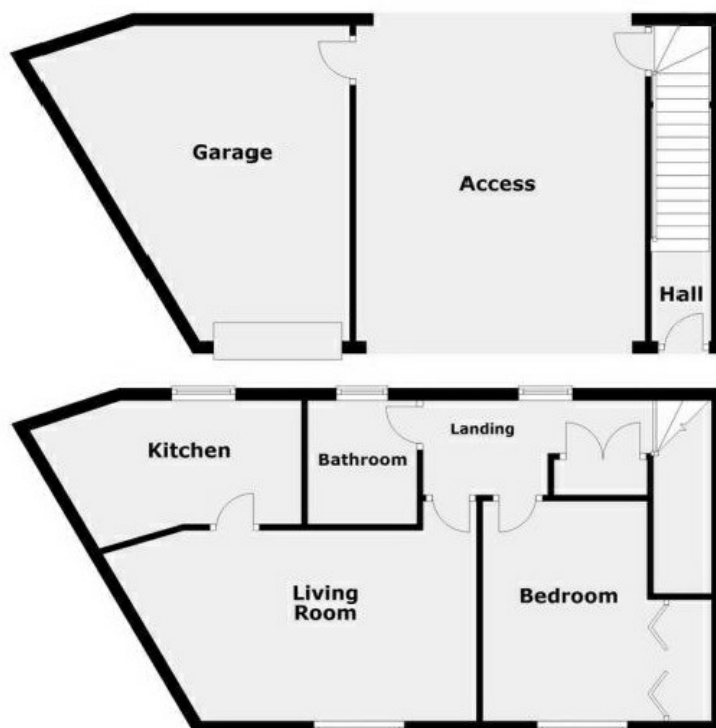
Double Bedroom to Rear - 3.6m x 2.9m (to wardrobes) (11'9" x 9'6")

Bathroom to Front - 1.9m x 1.7m (6'2" x 5'6")

Single Garage - 5.1m x 5.6m (max) (16'8" x 18'4")

Tenure

We are advised by the vendor that the property is leasehold with approx. 972 years remaining on the lease and a service charge of approx. £85 per annum but are awaiting confirmation from the vendor's solicitor. We would advise all interested parties to obtain verification through their own solicitor or legal representative. EPC supplied by Vendor. Current council tax band – B



316 Stratford Road
Shirley
Solihull
B90 3DN

www.smart-homes.co.uk
0121 744 4144

Agents Note: Whilst every care has been taken to prepare these particulars, they are for guidance purposes only. We believe all information to be correct from the day of marketing however, we advise and recommend that your conveyancer and or surveyor verifies all information supplied. All measurements are approximate and are for general guidance purposes only and whilst every care has been taken to ensure their accuracy, they should not be relied upon and potential buyers are advised to recheck the measurements.