



Studland Road Hall Green, Birmingham

- A Very Well Presented Three Bedroom Family Home
- Open Plan Lounge/Kitchen/Diner
- Private Mature Rear Garden
- No Upward Chain

Offers Over £315,000

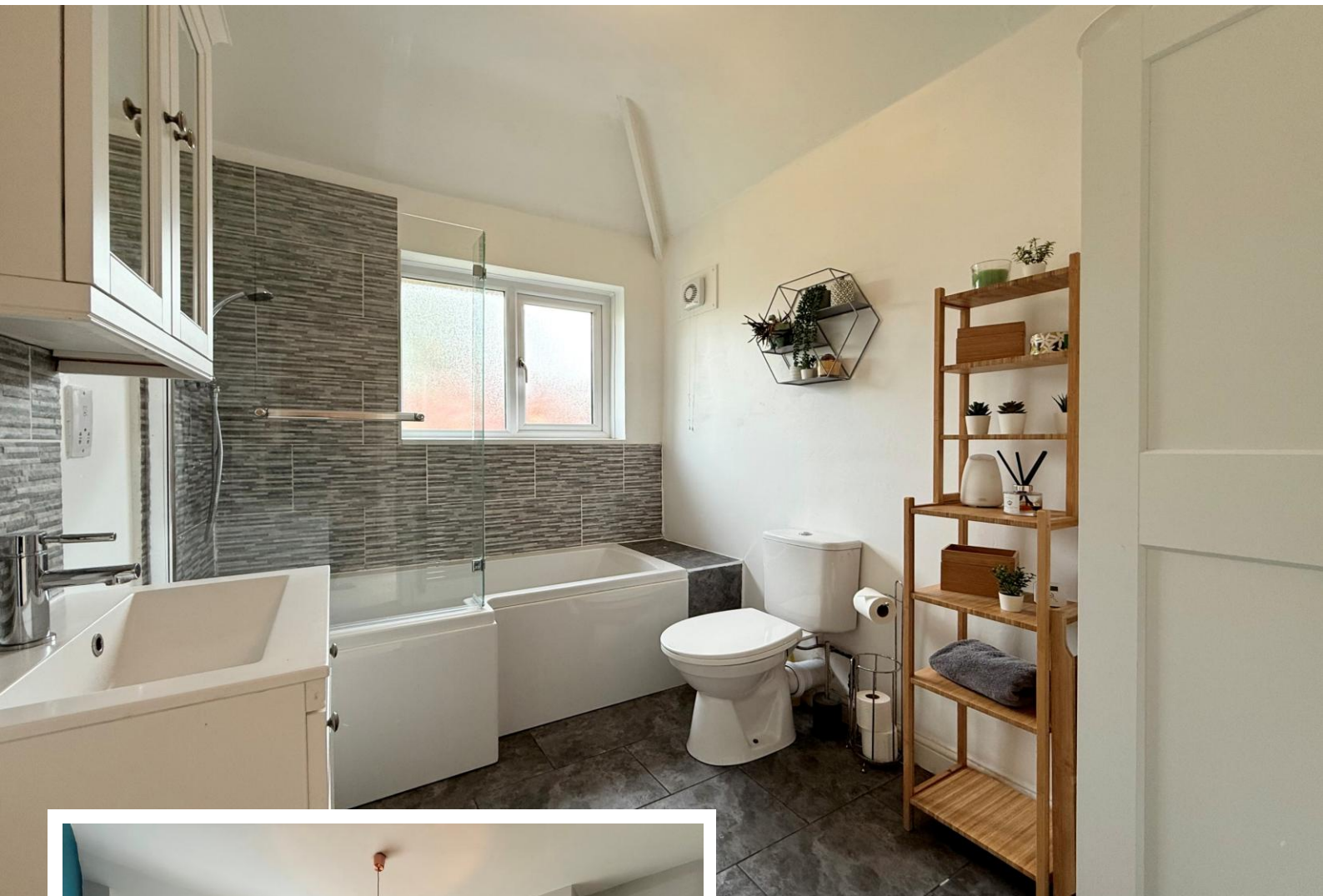
Current EPC Rating - TBC
Current Council Tax Band - C





Property Description

A very well presented semi-detached family home situated in a most popular location and benefiting from no upward chain. Offering accommodation comprising an open plan lounge/kitchen/diner, three bedrooms, re-fitted family bathroom, private mature rear garden and driveway parking



Rooms & Measurements

Lounge/Diner 8m x 3.53m (26'3" x 11'7")

Fitted Kitchen 3.43m max x 1.93m (11'3" max x 6'4")

Bedroom One to Front 3.43m x 3.35m (11'3" x 11'0")

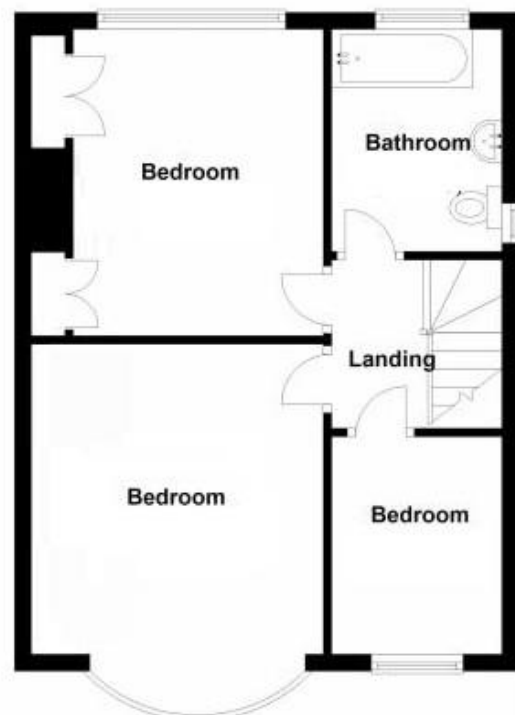
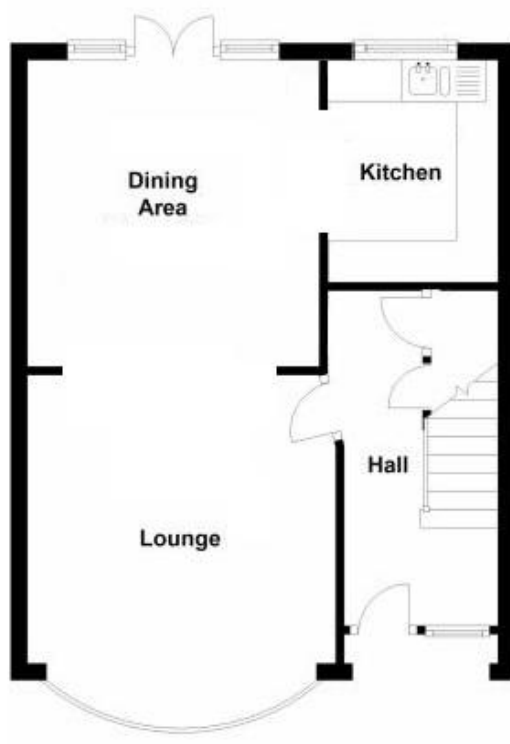
Bedroom Two to Rear 3.48m x 3.05m (11'5" x 10'0")

Bedroom Three to Front 2.46m x 1.93m (8'1" x 6'4")

Re-Fitted Family Bathroom to Rear 2.54m x 1.91m (8'4" x 6'3")

Tenure

We are advised by the vendor that the property is freehold. We would advise all interested parties to obtain verification through their own solicitor or legal representative. EPC supplied by Nigel Hodges. Current council tax band – C



316 Stratford Road
Shirley
Solihull
B90 3DN

www.smart-homes.co.uk
0121 744 4144

Agents Note: Whilst every care has been taken to prepare these particulars, they are for guidance purposes only. We believe all information to be correct from the day of marketing however, we advise and recommend that your conveyancer and or surveyor verifies all information supplied. All measurements are approximate and are for general guidance purposes only and whilst every care has been taken to ensure their accuracy, they should not be relied upon and potential buyers are advised to recheck the measurements.