



smarthomes

Greenaleigh Road Yardley Wood, Birmingham

- A Well Presented Three Bedroom Semi-Detached Family Home
- Re-Fitted Breakfast Kitchen & Family Bathroom
- Landscaped Facing Rear Garden
- Conservatory & Driveway Parking

£250,000

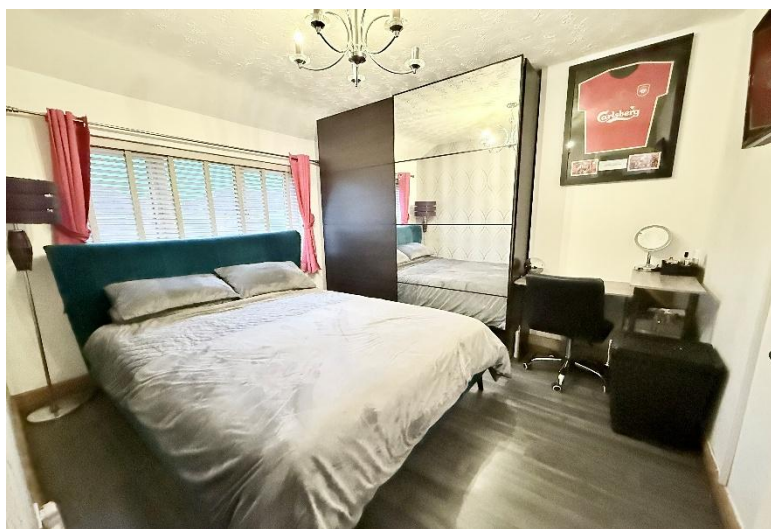
Current EPC Rating - TBC
Current Council Tax Band - B





Property Description

A well presented semi-detached family home offering accommodation comprising a spacious lounge, breakfast kitchen, conservatory with warm roof, three good size bedrooms, family bathroom, landscaped rear garden and driveway parking



Rooms & Measurements

Lounge to Front 5.11m x 3.96m (16'9" x 13'0")

Breakfast Kitchen 4.9m x 2.82m (16'1" x 9'3")

Conservatory with Warm Roof 3.48m x 3.38m (11'5" x 11'1")

Bedroom One to Front 3.28m x 2.77m (10'9" x 9'1")

Bedroom Two to Rear 3.96m x 2.54m (13'0" x 8'4")

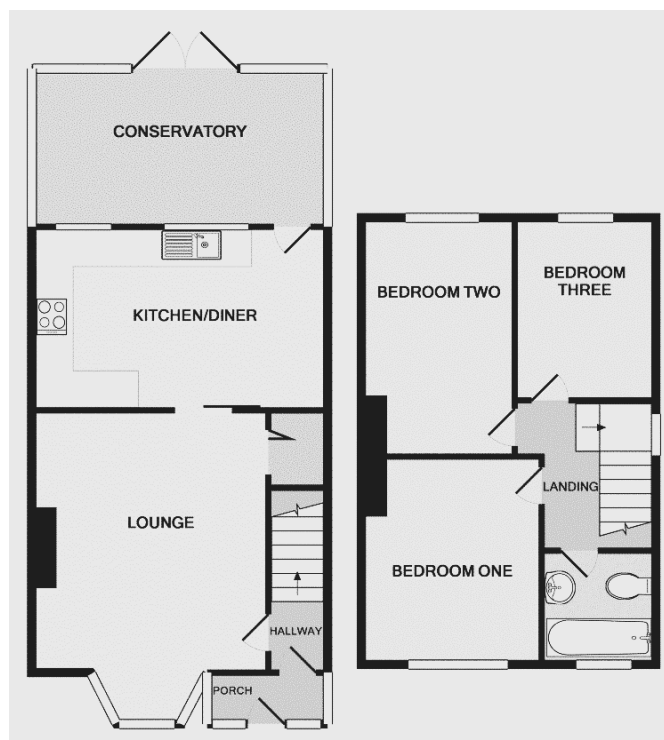
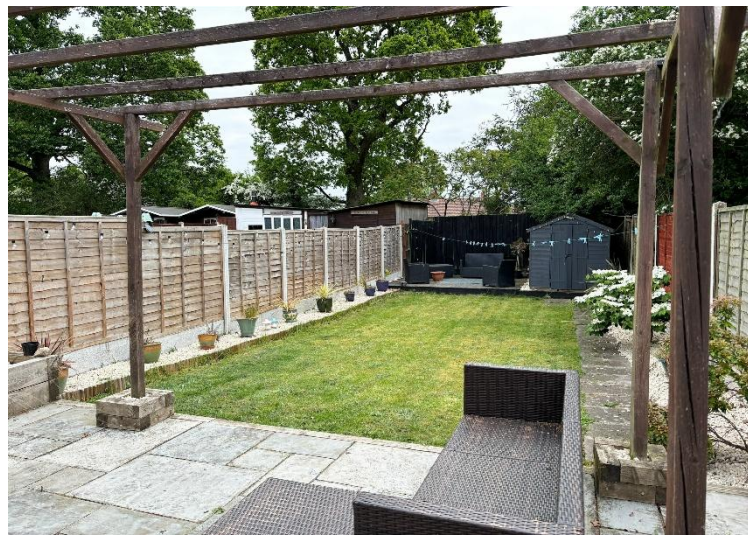
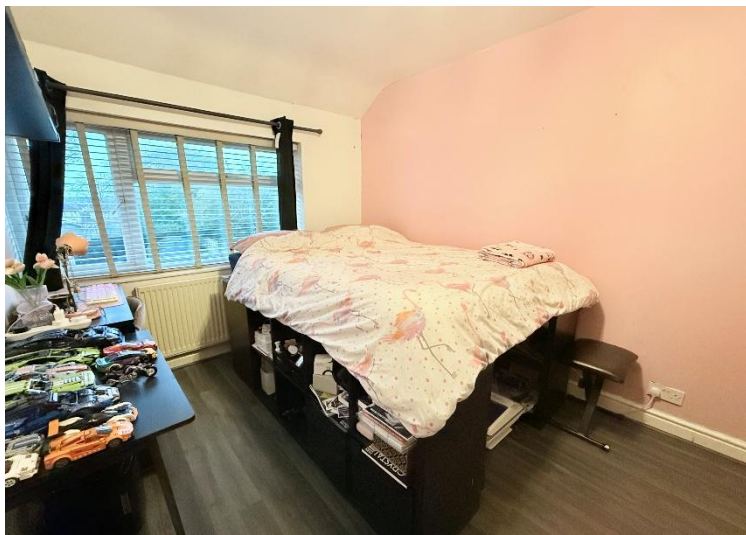
Bedroom Three to Rear 2.9m x 2.26m (9'6" x 7'5")

Family Bathroom 2.31m max x 1.63m max (7'7" max x 5'4" max)

Tenure

We are advised by the vendor that the property is freehold. We would advise all interested parties to obtain verification through their own solicitor or legal representative. EPC supplied by Nigel Hodges.

Current council tax band – B



316 Stratford Road
Shirley
Solihull
B90 3DN

www.smart-homes.co.uk
0121 744 4144

Agents Note: Whilst every care has been taken to prepare these particulars, they are for guidance purposes only. We believe all information to be correct from the day of marketing however, we advise and recommend that your conveyancer and or surveyor verifies all information supplied. All measurements are approximate are for general guidance purposes only and whilst every care has been taken to ensure their accuracy, they should not be relied upon and potential buyers are advised to recheck the measurements.