



## Farmers Lane

Tidbury Green, Solihull

- A Beautifully Presented Three Bedroom Family Home
- Kitchen/Diner & En-Suite Shower Room
- Landscaped South Facing Rear Garden
- Driveway with Two Parking Spaces

**Offers Over £400,000**

Current EPC Rating - B  
Current Council Tax Band - D







## Property Description

A very well presented and recently constructed semi-detached family home situated in a most popular semi-rural location. Offering accommodation comprising a spacious lounge, open plan kitchen/diner, guest W.C, three bedrooms, en-suite shower room, family bathroom, landscaped South facing rear garden and driveway parking





## Rooms & Measurements

Spacious Lounge to Front 4.67m x 3.1m (15'4" x 10'2")

Open Plan Kitchen/Diner to Rear 5.26m x 3.45m (17'3" x 11'4")

Guest W.C

Bedroom One to Front 3.66m x 3.43m (12'0" x 11'3")

En-Suite Shower Room 2.24m x 1.3m (7'4" x 4'3")

Bedroom Two to Rear 3.15m x 2.79m (10'4" x 9'2")

Bedroom Three to Rear 2.9m x 1.96m (9'6" x 6'5")

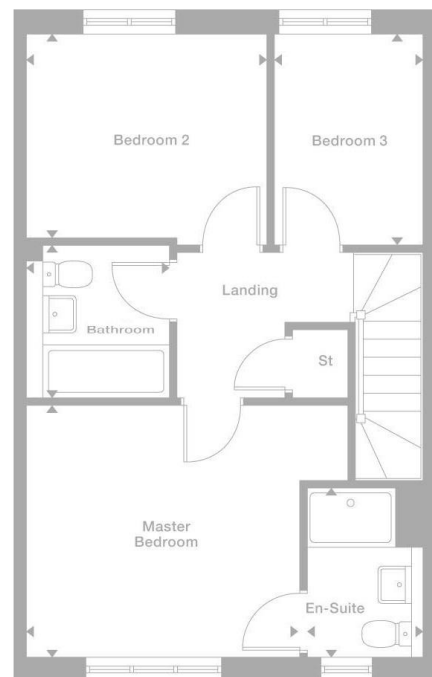
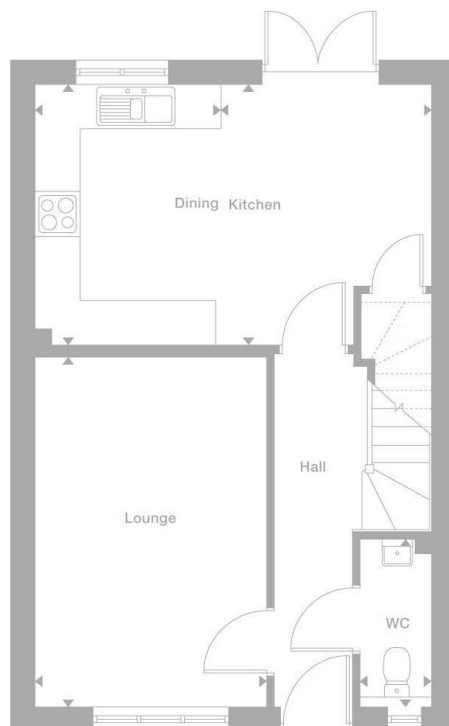
Family Bathroom 1.98m x 1.7m (6'6" x 5'7")

Tenure

We are advised by the vendor that the property is freehold. We would advise all interested parties to obtain verification through their own solicitor or legal representative.

EPC supplied by vendor. Current council tax band – D





316 Stratford Road  
Shirley  
Solihull  
B90 3DN

[www.smart-homes.co.uk](http://www.smart-homes.co.uk)  
0121 744 4144

Agents Note: Whilst every care has been taken to prepare these particulars, they are for guidance purposes only. We believe all information to be correct from the day of marketing however, we advise and recommend that your conveyancer and or surveyor verifies all information supplied. All measurements are approximate are for general guidance purposes only and whilst every care has been taken to ensure their accuracy, they should not be relied upon and potential buyers are advised to recheck the measurements.