



## Park View House, Main Street

Dickens Heath, Solihull

- A Beautifully Presented Top Floor Apartment
- Open Plan Lounge/Kitchen/Diner
- Double Bedroom with Fitted Wardrobes
- Luxury Re-Fitted Shower Room

**£150,000**

Current EPC Rating - D  
Current Council Tax Band - B







## Property Description

A beautifully presented top floor apartment benefitting an open plan lounge/kitchen/diner, double bedroom with fitted wardrobes and a re-fitted shower room

Dickens Heath village offers a contemporary life style with a superb range of family homes and apartments, restaurants, offices, shops, medical surgeries as well as a local library, village hall and village green to provide that community lifestyle. Set within easy access to the M42 and train stations the village is ideal for families and commuters



## Rooms & Measurements

Open Plan Lounge/Kitchen/Diner to Rear 8.28m max x 3.84m max (27'2" max x 12'7" max)

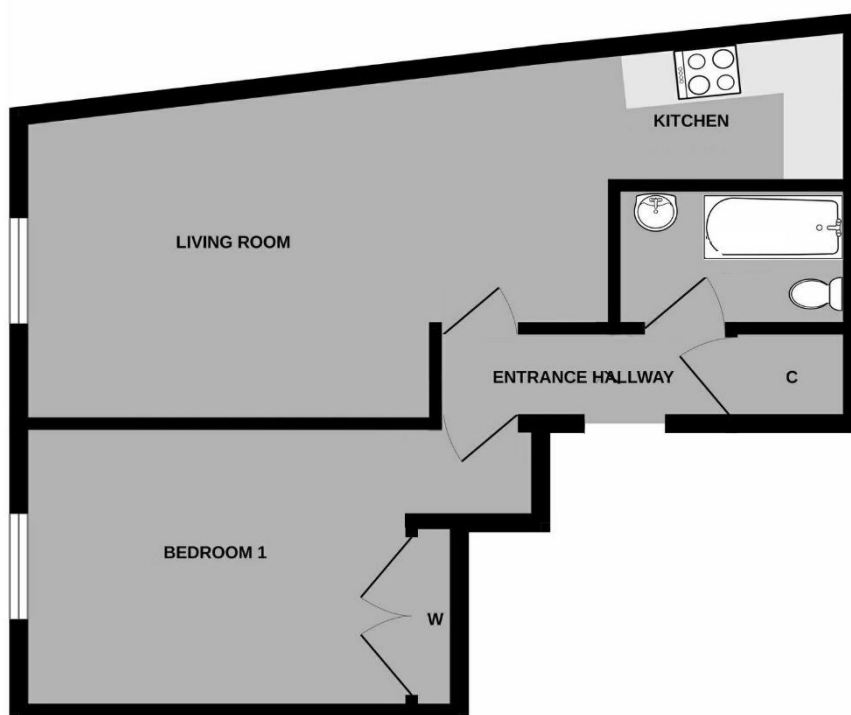
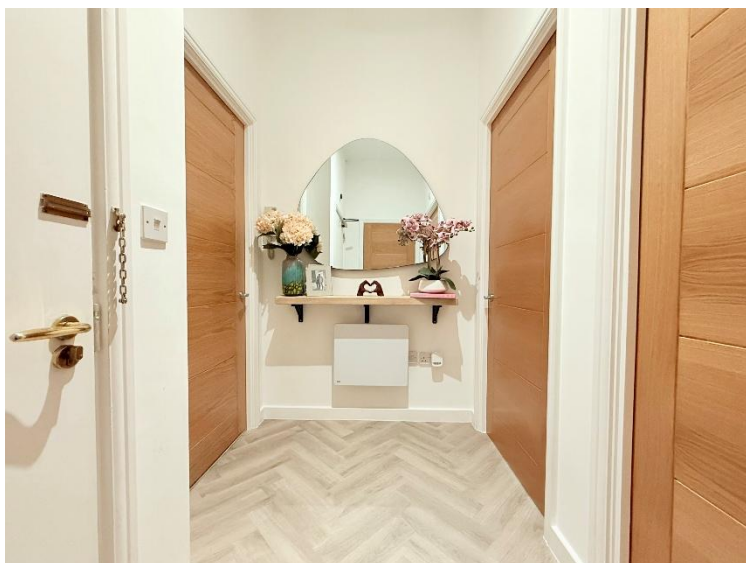
Double Bedroom to Rear 3.84m min x 2.74m (12'7" min x 9'0")

Re-Fitted Shower Room 2.67m x 1.63m (8'9" x 5'4")

### Tenure

We are advised by the vendor that the property is leasehold with approx. 976 years remaining on the lease, a ground rent of approx. £202.02 per annum and a service charge of approx. £2,041.12 per annum but are awaiting confirmation from the vendor's solicitor. We would strongly advise all interested parties to obtain verification through their own solicitor or legal representative. EPC supplied by Nigel Hodges. Current council tax band - B





316 Stratford Road  
Shirley  
Solihull  
B90 3DN

[www.smart-homes.co.uk](http://www.smart-homes.co.uk)  
0121 744 4144

Agents Note: Whilst every care has been taken to prepare these particulars, they are for guidance purposes only. We believe all information to be correct from the day of marketing however, we advise and recommend that your conveyancer and or surveyor verifies all information supplied. All measurements are approximate and are for general guidance purposes only and whilst every care has been taken to ensure their accuracy, they should not be relied upon and potential buyers are advised to recheck the measurements.