



Kilsby Grove

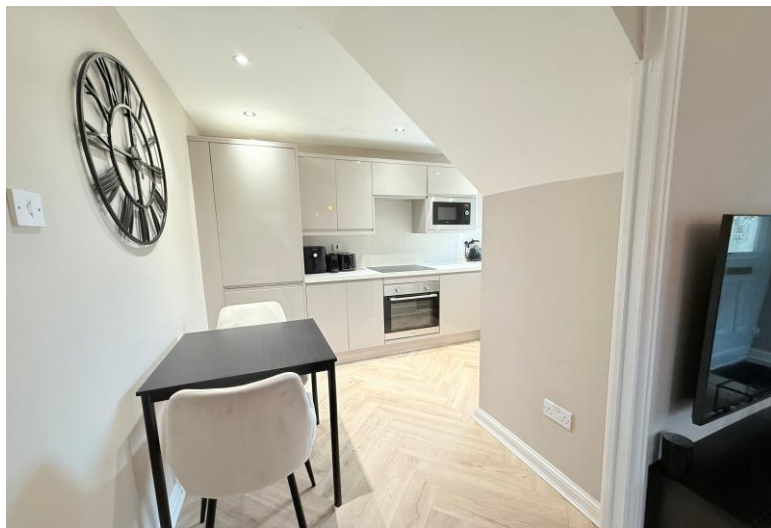
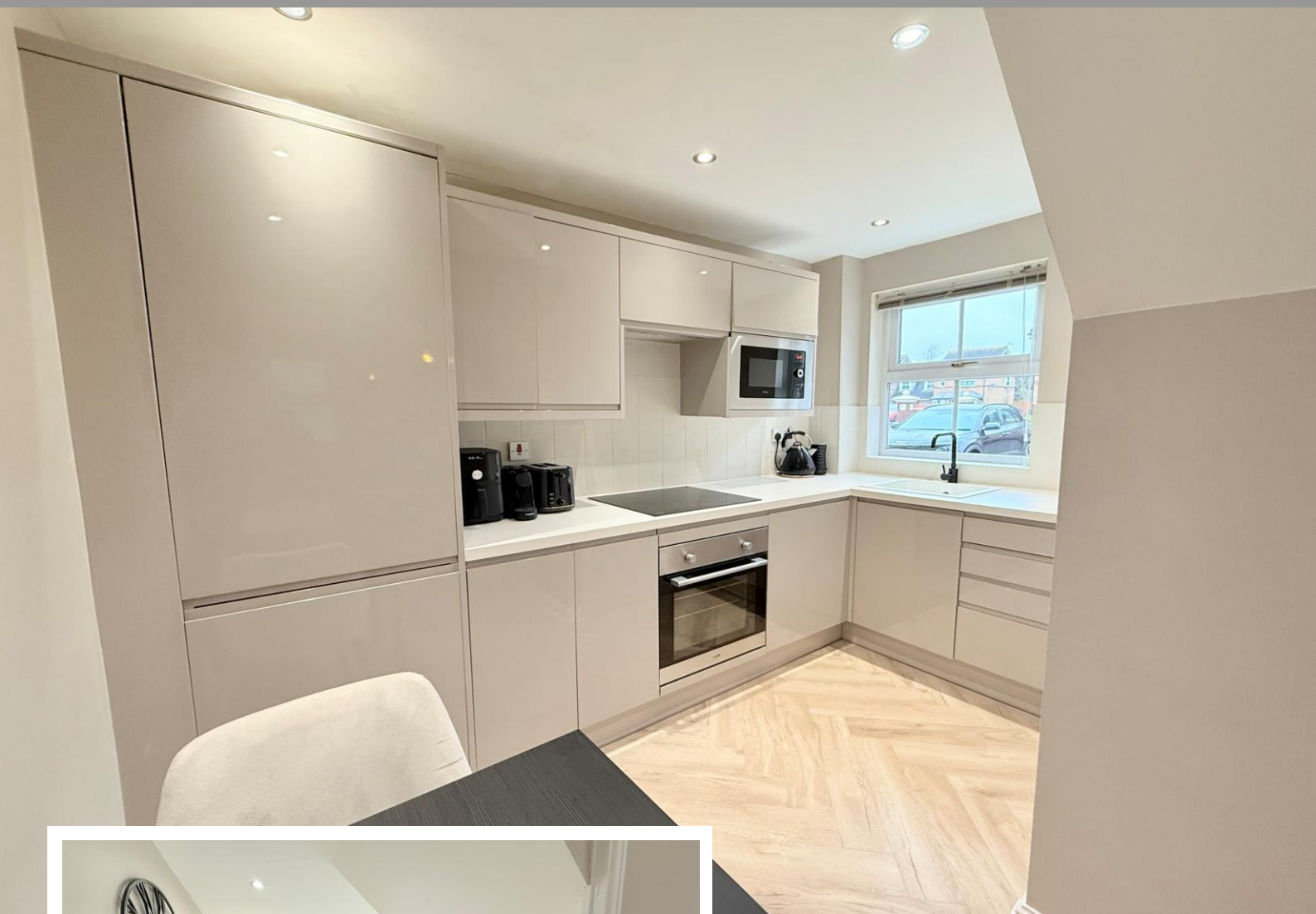
Hillfield, Solihull

- A Beautifully Presented One Bedroom Terraced Home
- Re-Fitted Kitchen/Diner & Re-Fitted Bathroom
- Dual Aspect Lounge & Re-Fitted Guest W.C
- Allocated Parking Space

£240,000

Current EPC Rating - D
Current Council Tax Band - C

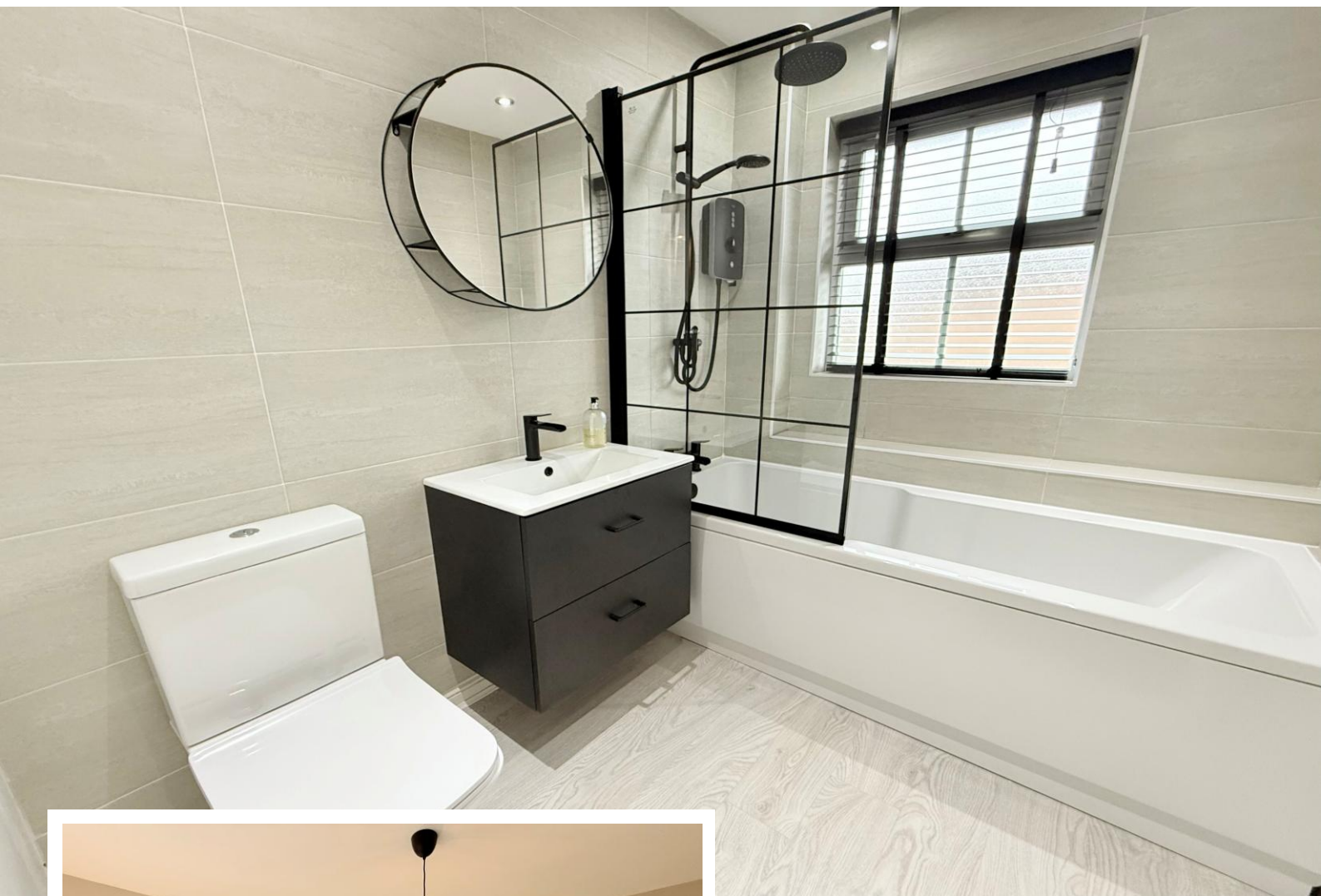




Property Description

A recently renovated and refurbished end terraced property offering one double bedroom, re-fitted kitchen, re-fitted bathroom, lounge, re-fitted guest WC and two allocated parking spaces

Hillfield is a very sought after location near to Solihull Town Centre and within Tudor Grange Academy senior school catchment. There are local shops in Monkspath off Shelley crescent, where there is a doctors, dentists and the popular Farm gastropub and restaurant. Solihull town centre offers an excellent choice of shopping facilities including Touchwood shopping centre, Waitrose and John Lewis department store.



Rooms & Measurements

Lounge to Front 3.43m x 3.23m (11'3" x 10'7")

Re-Fitted Breakfast Kitchen to Front 3.23m x 2.62m
(10'7" x 8'7")

Guest W.C

Dual Aspect Bedroom One 3.2m x 3.43m (10'6" x 11'3")

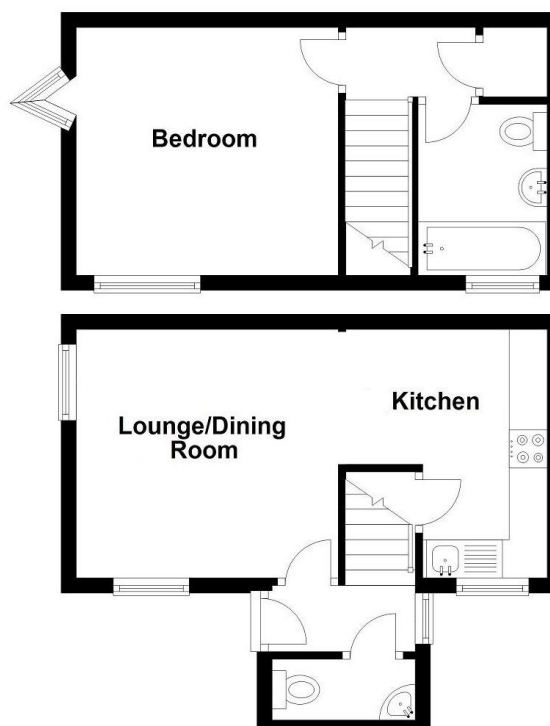
Re-Fitted Bathroom to Front 2.29m x 1.68m (7'6" x 5'6")

Tenure

We are advised by the vendor that the property is freehold. We would advise all interested parties to obtain verification through their own solicitor or legal representative.

EPC supplied by vendor.

Current council tax band – C



316 Stratford Road
Shirley
Solihull
B90 3DN

www.smart-homes.co.uk
0121 744 4144

Agents Note: Whilst every care has been taken to prepare these particulars, they are for guidance purposes only. We believe all information to be correct from the day of marketing however, we advise and recommend that your conveyancer and or surveyor verifies all information supplied. All measurements are approximate are for general guidance purposes only and whilst every care has been taken to ensure their accuracy, they should not be relied upon and potential buyers are advised to recheck the measurements.