



## Shepherds Green Road

Shirley, Solihull

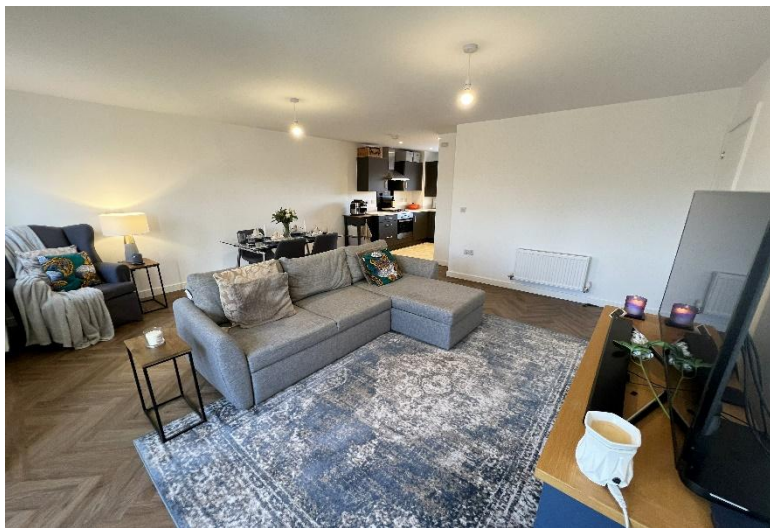
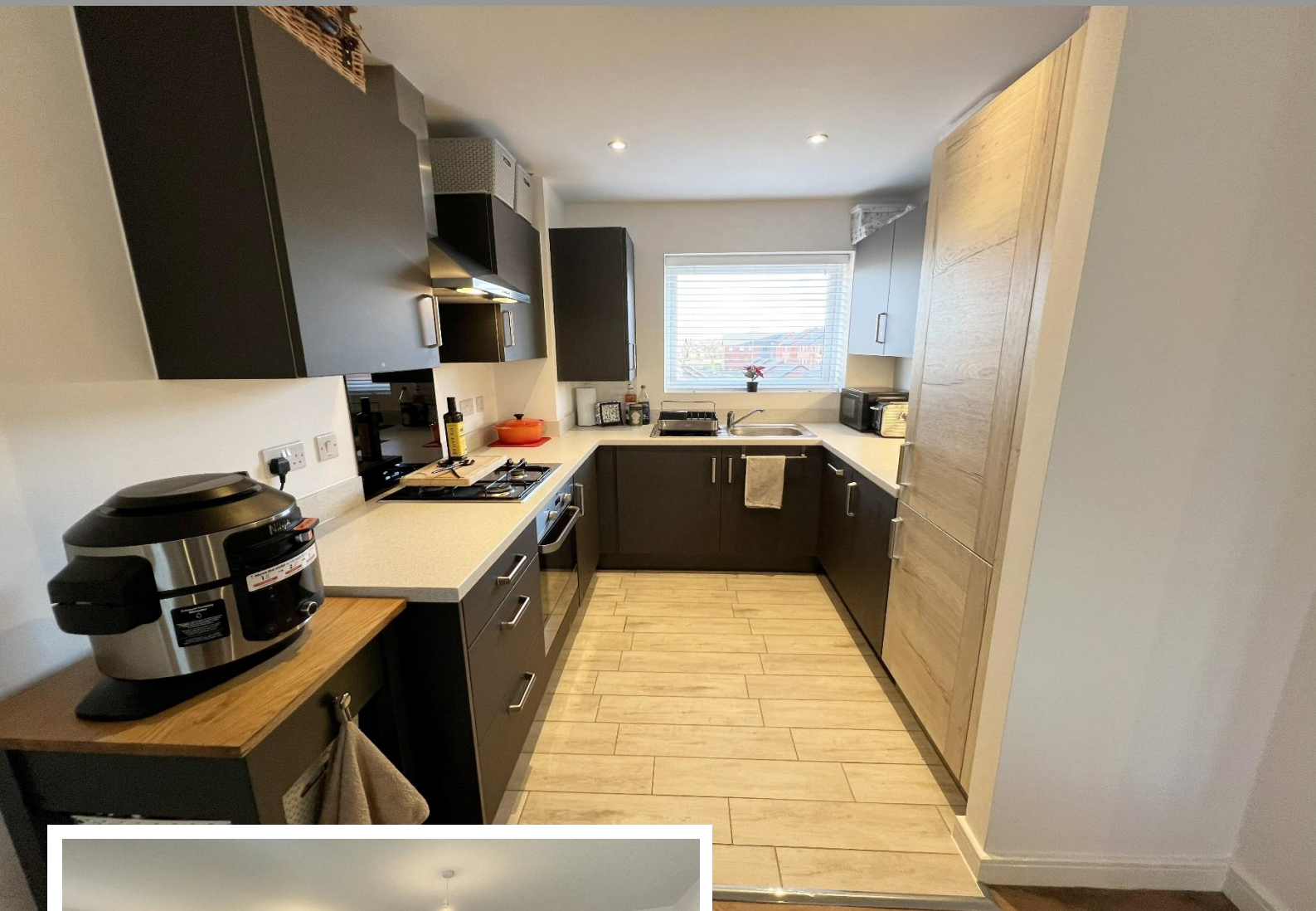
- A Beautifully Presented Top Floor Two Bedroom Apartment
- Open Plan Lounge/Kitchen/Diner with Juliet Balcony
- Modern Bathroom, LVT Flooring & Luxury Carpets
- Two Allocated Parking Spaces

**£239,990**

Current EPC Rating - B  
Current Council Tax Band - B





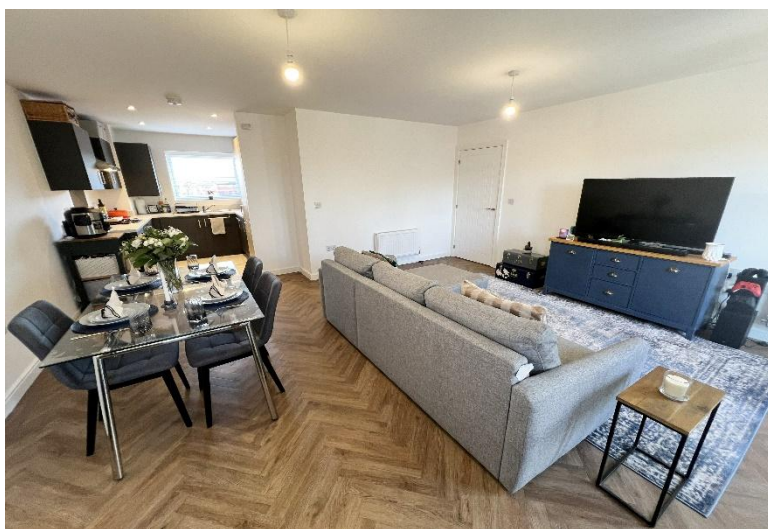
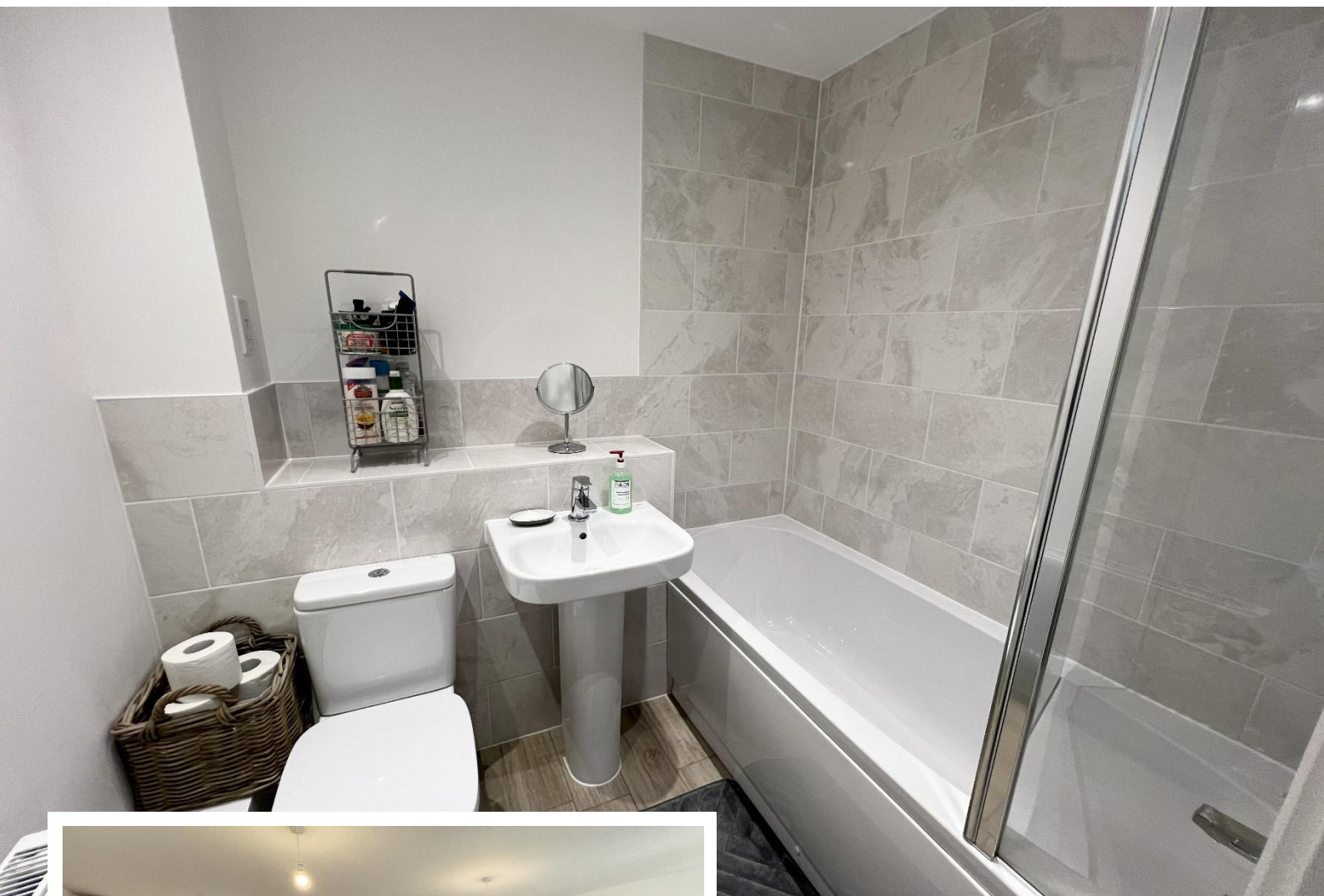


## Property Description

A very well presented and spacious top floor apartment situated in a most convenient location and benefiting from no immediate neighbours on the same floor. Offering accommodation comprising open plan lounge/diner and contemporary kitchen, two bedrooms, modern bathroom, two allocated parking spaces and visitors spaces. Further benefiting from quality LVT flooring throughout with a beautiful herringbone design along with luxury carpets in bedrooms

Shirley is home to a host of leisure and retail facilities. For shopping, Sears Retail Park and Parkgate are packed with an array of popular major retail names, and Shirley high street has a good variety of independently run outlets. Just minutes away you can enjoy the convenience of gymnasiums along with a choice of large supermarkets like Waitrose, Asda, Sainsburys, Aldi and Tesco. Food lovers are spoilt for choice, within walking distance there is a diverse mix of cultural tastes to experience, from fine dining restaurants through to numerous cafés and bars. Local schools include Blossomfield Infant and Nursery School, Haslucks Green Junior School, Our Lady of the Wayside Catholic Primary School, Tudor Grange Primary Academy St James, Light Hall Secondary School, Tudor Grange Academy and Alderbrook School and Sixth Form to name but a few. Commuters are particularly served well, with regular bus and train services and easy access to Junction 4 of the M42





## Rooms & Measurements

Lounge/Diner Area 5.1m x 5m (16'8" x 16'4")

Kitchen Area 2.4m x 2.4m (7'10" x 7'10")

Bedroom One 3.5m x 2.8m (11'5" x 9'2")

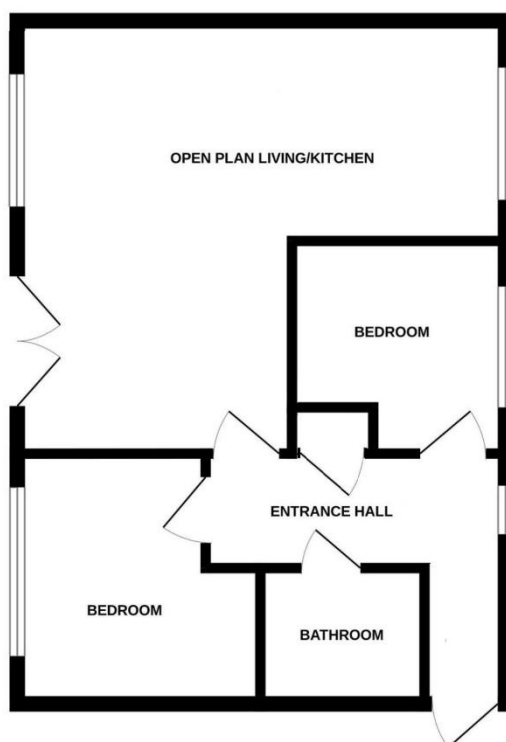
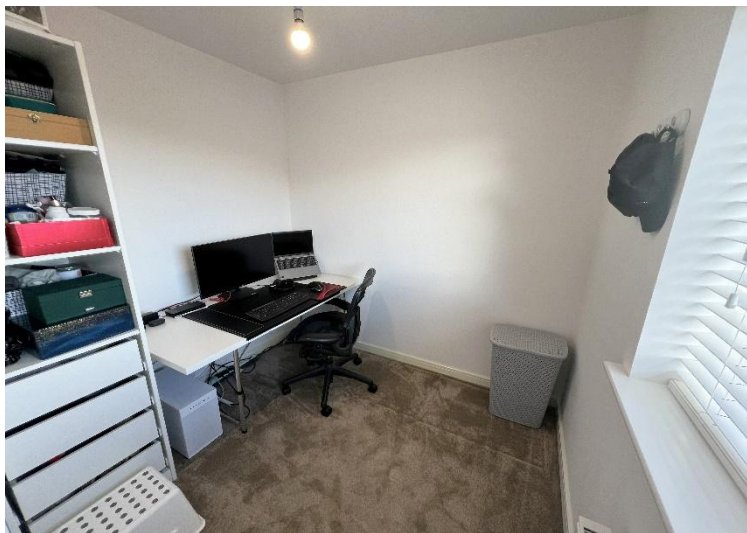
Bedroom Two 2.5m x 2.3m (8'2" x 7'6")

Family Bathroom 1.9m x 1.6m (6'2" x 5'2")

### Tenure

We are advised by the vendor that the property is leasehold with approx. 995 years remaining on the lease, a service charge of approx. £1,500 per annum and no ground rent. We would advise all interested parties to obtain verification through their own solicitor or legal representative. EPC supplied by Vendor. Current council tax band – B





316 Stratford Road  
Shirley  
Solihull  
B90 3DN

[www.smart-homes.co.uk](http://www.smart-homes.co.uk)  
0121 744 4144

Agents Note: Whilst every care has been taken to prepare these particulars, they are for guidance purposes only. We believe all information to be correct from the day of marketing however, we advise and recommend that your conveyancer and or surveyor verifies all information supplied. All measurements are approximate are for general guidance purposes only and whilst every care has been taken to ensure their accuracy, they should not be relied upon and potential buyers are advised to recheck the measurements.