



Green Acres

Acocks Green, Birmingham

- A Well Maintained Three Double Bedroom Family Home
- Fitted Kitchen & Spacious Through Lounge/Diner
- Conservatory & Guest W.C
- Garage Store & Driveway Parking

OIRO £340,000

Current EPC Rating - D
Current Council Tax Band - D





Property Description

A well presented detached family home offering three bedrooms, entrance hall, guest WC, spacious through lounge/diner, fitted kitchen, utility, conservatory, family shower room, low maintenance rear garden, off road parking and garage store



Rooms & Measurements

Spacious Through Lounge/Diner 3.73m x 6.48m (12'3" (min to front) x 21'3")

Fitted Kitchen 3.28m x 2.36m (10'9" x 7'9")

Covered Side Passageway 6.83m x 0.91m (22'5" x 3'0")

Utility Room 3.23m x 2.44m (10'7" x 8'0")

Conservatory 2.49m x 8.23m (8'2" x 27'0")

Bedroom One to Front 3.78m x 3.48m (12'5" x 11'5")

Bedroom Two to Front 4.39m x 2.41m (14'5" x 7'11")

Bedroom Three to Rear 2.92m x 3.58m (9'7" (max) x 11'9" (max))

Family Shower Room 1.96m x 2.36m (6'5" x 7'9")

Garage Store 2.39m x 1.93m (7'10" x 6'4")

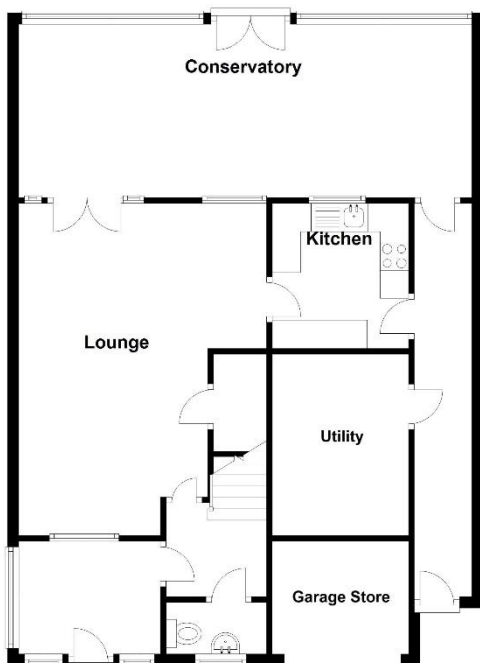
Tenure

We are advised by the vendor that the property is freehold, but are awaiting confirmation from the vendor's solicitor. We would advise all interested parties to obtain verification through their own solicitor or legal representative. EPC supplied by Nigel Hodges. Current council tax band – D

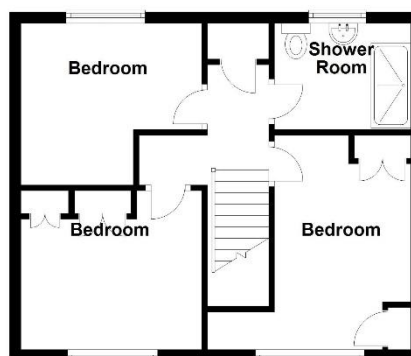


Ground Floor

Total area: approx. 118.9 sq. metres (1280.1 sq. feet)



First Floor



316 Stratford Road
Shirley
Solihull
B90 3DN

www.smart-homes.co.uk
0121 744 4144

Agents Note: Whilst every care has been taken to prepare these particulars, they are for guidance purposes only. We believe all information to be correct from the day of marketing however, we advise and recommend that your conveyancer and or surveyor verifies all information supplied. All measurements are approximate and are for general guidance purposes only and whilst every care has been taken to ensure their accuracy, they should not be relied upon and potential buyers are advised to recheck the measurements.