



smarthomes

Dorchester Gate

Dorchester Road, Solihull, B91 1LJ

- Beautifully Presented Ground Floor Apartment
- Two Double Bedrooms
- En Suite & Bathroom
- No Upward Chain

Offers Over £299,000

EPC Rating - 78

Current Council Tax Band - D





Property Description

Situated in a sought after and convenient location for many of the amenities in the Solihull area. This highly regarded schooling district is complemented by easy access to Solihull Hospital, Jaguar Land Rover and Solihull Train Station with commuter services to Birmingham City Centre and London Marylebone. Solihull Town Centre offers an excellent choice of shopping facilities including Touchwood and John Lewis Department Store. There is easy road access to the M42 motorway with links to M40, M6 & M5, NEC Arena, Resorts World and Birmingham International Airport & Train Station.



The property is set back from the road behind automated gates leading to allocated parking and secure intercom leading into



Communal Reception Hall

Having lift to all floors and inner doorway leading to apartment 2

Spacious Entrance Hall

With inset downlighters, ceiling smoke alarm, central heating, radiator, coving to ceiling, doors to built-in storage cupboard housing the central heating boiler and doors leading off to

Double Aspect Lounge Diner

17' 0" x 17' 9" (5.18m x 5.41m) Being double aspect with double glazed French doors to rear communal gardens, double glazed window to side, two central heating radiators and two ceiling light points



Modern Kitchen Breakfast Room

17' 0" x 9' 7" (5.18m x 2.92m) Being fitted with a range of wall and base units with complementary work surfaces, concealed lighting to wall units, sink and drainer unit with hot tap, four ring Bosch ceramic hob set below combination light and extractor, integrated Bosch microwave oven, housing for fridge freezer, integrated washing machine, slim line dishwasher, tiling to flooring, central heating radiator, ceiling light point and inset down lighters



Master Bedroom

10' 10" into wardrobe x 13' 10" (3.3m x 4.22m) With double aspect double glazed windows, double glazed French doors leading to Juliet balcony, central heating radiator, fitted wardrobes and hot boxes, ceiling light point, bedside tables and additional double built-in wardrobe

En Suite Shower Room

Being fitted with a white suite comprising of; low flush WC, floating Porcelanosa wash hand basin with waterfall mixer tap and large shower enclosure with body jets, built-in airing cupboard housing the Worcester central heating boiler, complementary tiling to walls and floor, obscure double glazed window and ceiling light point.

Bedroom Two to Side

11' 3" x 9' 5" (3.43m x 2.87m) With double glazed window to side elevation, double fitted wardrobes, radiator and ceiling light point





Family Bathroom

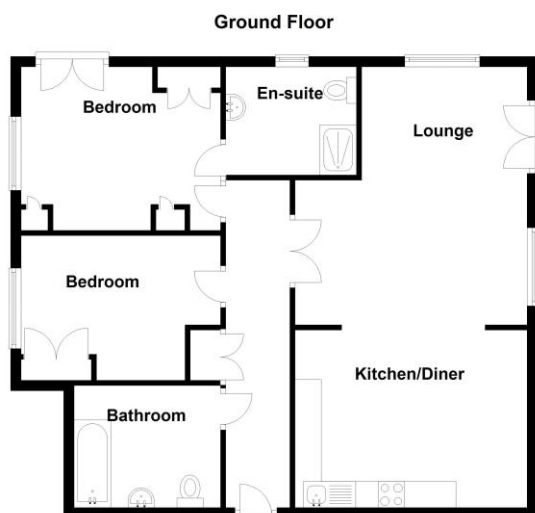
Being fitted with a three piece white suite comprising; panelled bath with shower over, low flush WC and pedestal wash hand basin, tiling to floors and water prone areas, electric shaver point, central heating radiator, ceiling extractor and ceiling light point.

Outside

There are communal gardens and communal seating areas, secure gate leading out to Blossomfield Road and automated electric gates and pedestrian gate leading out to Dorchester Road. There are two allocated parking spaces; one being underground and there is one allocated storage box.

Tenure

We are advised by the vendor that the property is leasehold with approx. 984 years remaining on the lease, a service charge of approx. £1,328 per annum inclusive of ground rent but are awaiting confirmation from the vendor's solicitor. We would strongly advise all interested parties to obtain verification through their own solicitor or legal representative. EPC supplied by Nigel Hodges. Current council tax band - D



Energy Efficiency Rating		
	Current	Potential
Very energy efficient - lower running costs		
(92-100) A		
(81-91) B		
(69-80) C	78	78
(55-68) D		
(39-54) E		
(21-38) F		
(1-20) G		
Not energy efficient - higher running costs		
England, Scotland & Wales		
EU Directive 2002/91/EC		