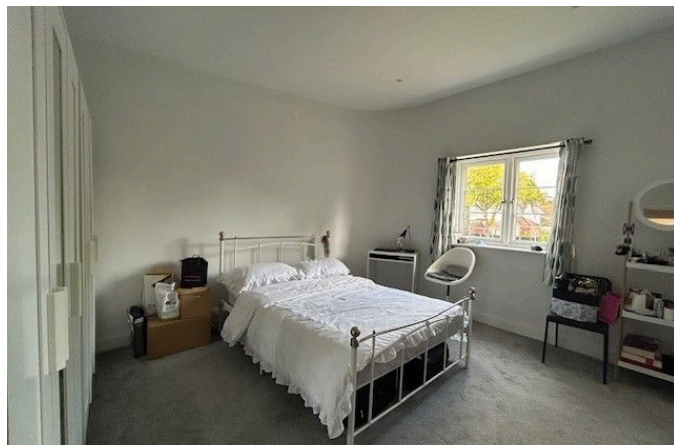


1 Petersfield Road, Hall Green

Offers In Region Of £262,000

🛏 2 🚿 1 🛋 1



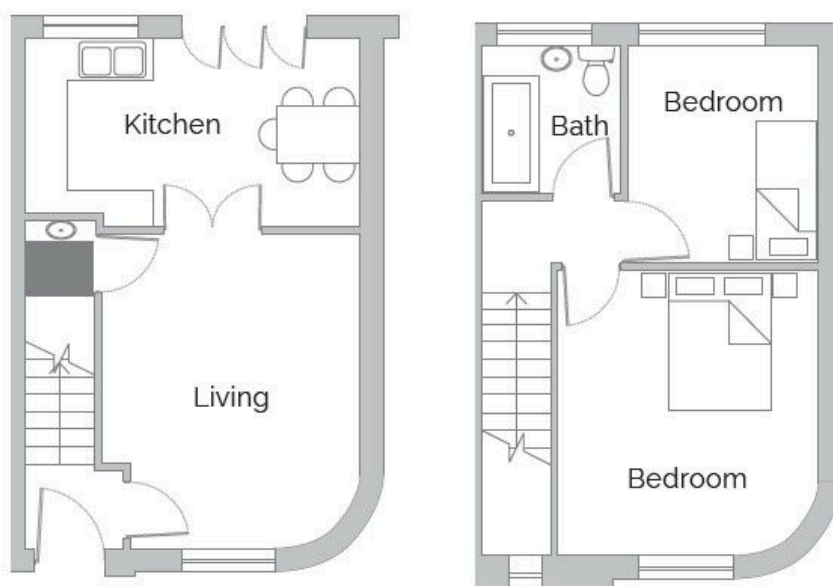
3 Union Road, Shirley, Solihull B90 3BT

sales • new homes • land • commercial • mortgages • auction

Registered Company in England and Wales. Company No 03591917
Registered Office: smart New Homes Ltd, 3 Union Road, Shirley, Solihull B90 3BT

- Modern End Terrace
- Gas Central Heating
- Lawned Gardens
- Located Close to Shops, Schools and Public Transport.
- Double Glazing
- Off Road Parking For Two Cars
- Fully Equipped Fitted Kitchen/Open Plan Diner
- Two Double Bedrooms
- Ideal First Home or Investment Property
- First Floor Modern Bathroom

1 PETERSFIELD ROAD



End terrace property set back from the road with 2 double bedrooms, reception hall, Spacious Lounge, Fully equipped fitted kitchen with open plan dining area and bi-fold doors into the garden. Double Glazing, Central Heating, Lawned gardens front and rear. Off road parking for 2 cars. The property is approximately 3 to 4 years old

3 Union Road, Shirley, Solihull B90 3BT

sales • new homes • land • commercial • mortgages • auction