



smarthomes

Packwood Mews

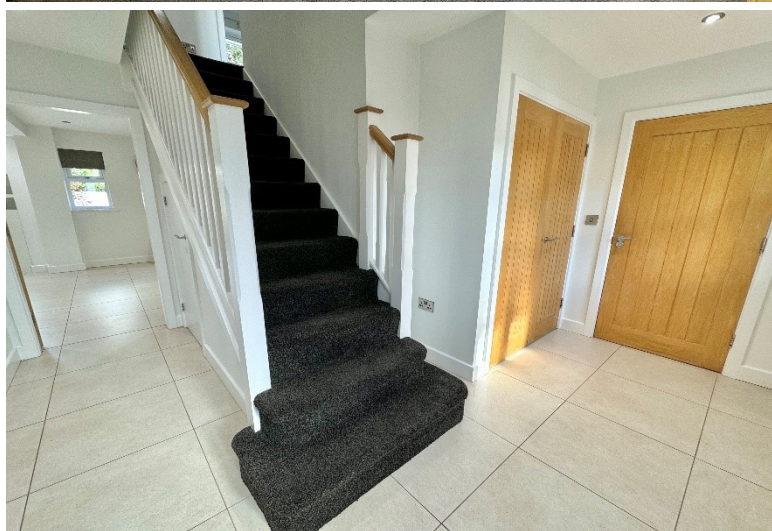
Knowle, Solihull

- Stunning Three Storey Detached Family Home
- Five Bedrooms
- Four En Suites & Four Piece Family Bathroom
- Double Garage

£900,000

Current EPC Rating 86 (B)
Current Council Tax Band - G





Property Description

A stunning three storey detached family home offered for sale with no upward chain and briefly affording five bedrooms, lounge, open plan family dining kitchen, utility, guest WC, four en suites, four-piece family bathroom, landscaped rear garden and double garage

Tenure

We are advised by the vendor that the property is freehold, but are awaiting confirmation from the vendor's solicitor. We would advise all interested parties to obtain verification through their own solicitor or legal representative. EPC supplied by vendor. Current council tax band – G



Rooms & Measurements

Guest WC

Lounge - 3.43m x 2.92m (11'3" x 9'7" (into bay)

Open Plan Family Dining Kitchen - 8.53m x 4.75m (28'0" x 15'7" (max)

Utility Room - 2.82m x 1.57m (9'3" x 5'2")

Double Garage - 5.31m x 5.51m (17'5" x 18'1)

Dual Aspect Master Bedroom - 4.5m x 3.96m (14'9" (min) x 13'0")

En Suite Shower Room - 1.88m x 3.53m (6'2" (into shower) x 11'7")

Bedroom Two- 2.87m x 2.51m (9'5" (up to wardrobe) x 8'3")

En Suite Shower Room - 2.24m x 0.97m (7'4" x 3'2")

Bedroom Three - 3.48m x 2.67m (11'5" x 8'9")

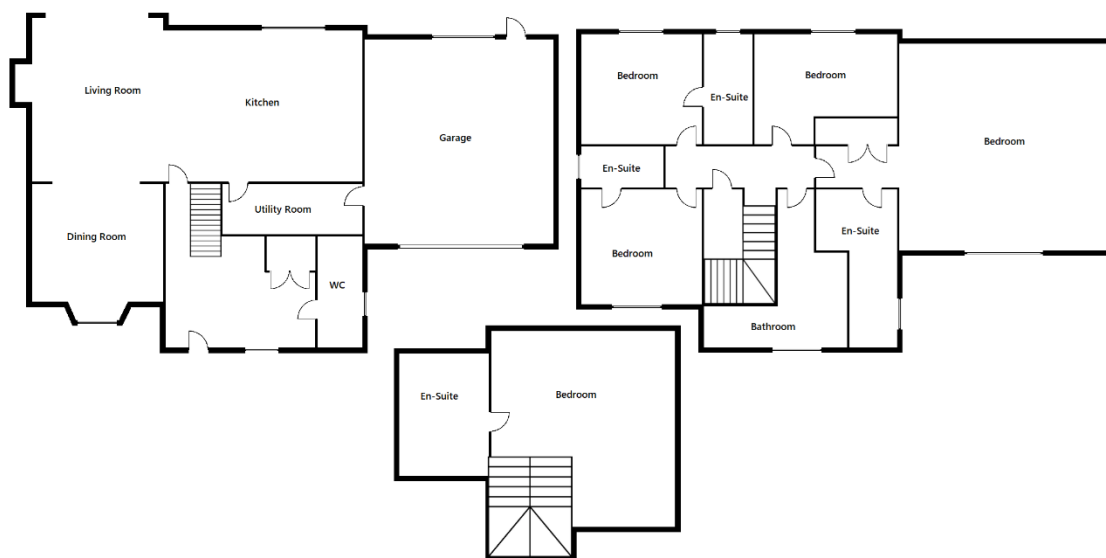
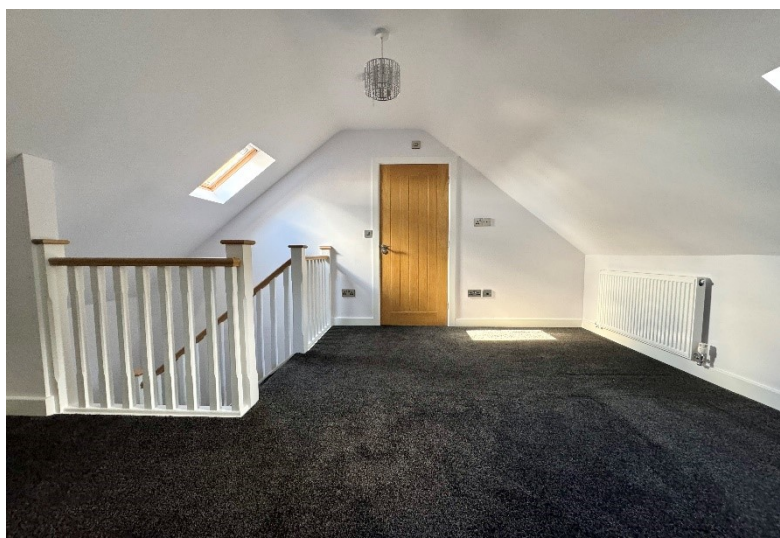
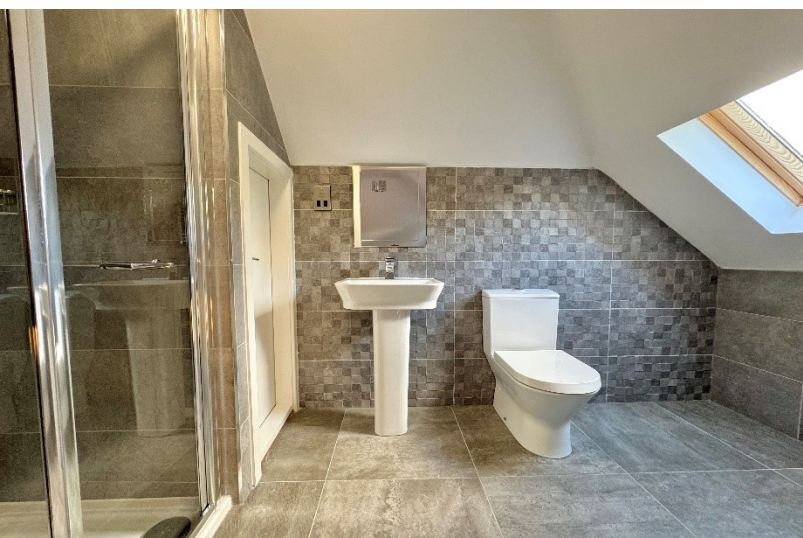
En Suite Shower Room - 1.14m x 2.46m (3'9" x 8'1")

Bedroom Four to Rear - 3.48m x 2.64m (11'5" x 8'8" (max)

Four Piece Family Bathroom - 3.71m x 2.36m (12'2" (max) x 7'9" (min)

Loft Bedroom Five 3.84m x 4.06m (12'7" x 13'4")

En Suite Shower Room - 1.65m x 3.2m (5'5" x 10'6" (into shower)



316 Stratford Road
Shirley
Solihull
B90 3DN

www.smart-homes.co.uk
0121 744 4144

Agents Note: Whilst every care has been taken to prepare these particulars, they are for guidance purposes only. We believe all information to be correct from the day of marketing however, we advise and recommend that your conveyancer and or surveyor verifies all information supplied. All measurements are approximate and for general guidance purposes only and whilst every care has been taken to ensure their accuracy, they should not be relied upon and potential buyers are advised to recheck the measurements.